

Glossary of Church and Architectural Terms

Cruciform: in the shape of the cross

Nave: Part of church where the congregation sits

Transept: a wing at right angles to the nave

Chancel: east end of the nave, where the Priest blesses the elements (bread and wine) for Communion. Before the Reformation the chancel was separated from the nave by a wooden screen.

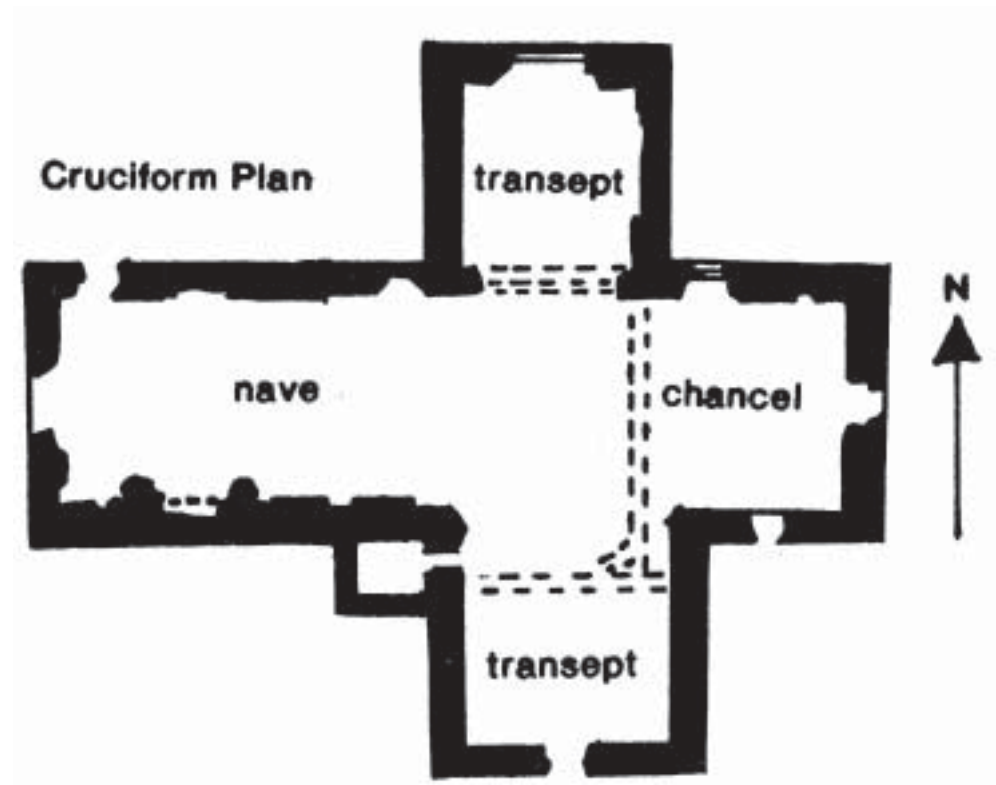
Lancet: a narrow pointed arched window

Tracery: ornamental stonework inside a window

Aumbry: recess in wall to hold the elements (bread and wine) for Communion, found in churches built before the Reformation of 1560

Sacrament House: a highly decorative aumbry.

Piscina: A recess in the wall for pouring away excess communion wine into the foundations of the church usually found in pre-Reformation or Catholic Churches.

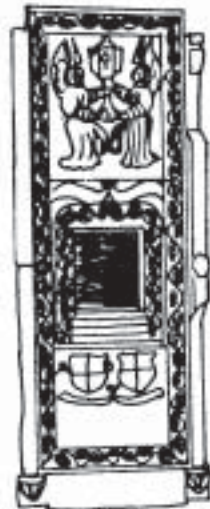




Aumbry



Piscina



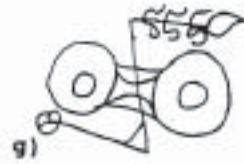
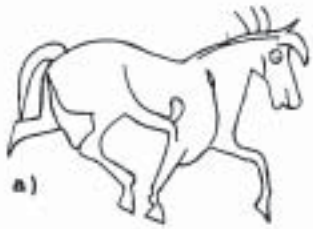
Sacrament House
Deskford Church



Lancel Windows
Elgin Cathedral



Tracery Windows
Paisley Abbey



SOME PICTISH SYMBOLS

- a) horse
- b) eagle
- c) fish
- d) Pictish Beast
- e) snake
- f) cauldron
- g) double disc and 'Z' rod
- h) crescent and 'V' rod
- i) mirror case, mirror, comb

