

Treatment of P3 Roads

P3 Roads

A decision will be taken by the Principal Roads Engineer or delegated officer in the area office whether P3 Roads will be treated. The decision will be made in the afternoon for starting at 8am the next day.

If treatment is authorised then the decision will be reviewed when the new 24 hour forecast comes in from the Met Office and a decision will be taken whether to allow continued treatment or if treatment will be stopped.

Decision Making

As per the "Forecast Sites to Check" table:

- Highest temperature for the Forecast Weather Stations to be taken from Vaisala or Met Office graphs
- Highest temperature for the Settlements to be taken from the public Met Office web site - <http://www.metoffice.gov.uk/public/weather/forecast/gfq0n9ghv>

After the Met Office 24 hour forecast comes in check the relevant forecast graph to see if the forecast surface temperature will, at any time, be 1°C or above.

If the surface temperature is 1°C or above at any time do not instruct treatment.

If the surface temperature is less 1°C all the way through till noon next day then check the relevant Met Office forecast for the next 48 hours. This is the public web site, not our Open Road site. If the air temperature will, at any time, be 3°C or above do not instruct treatment.

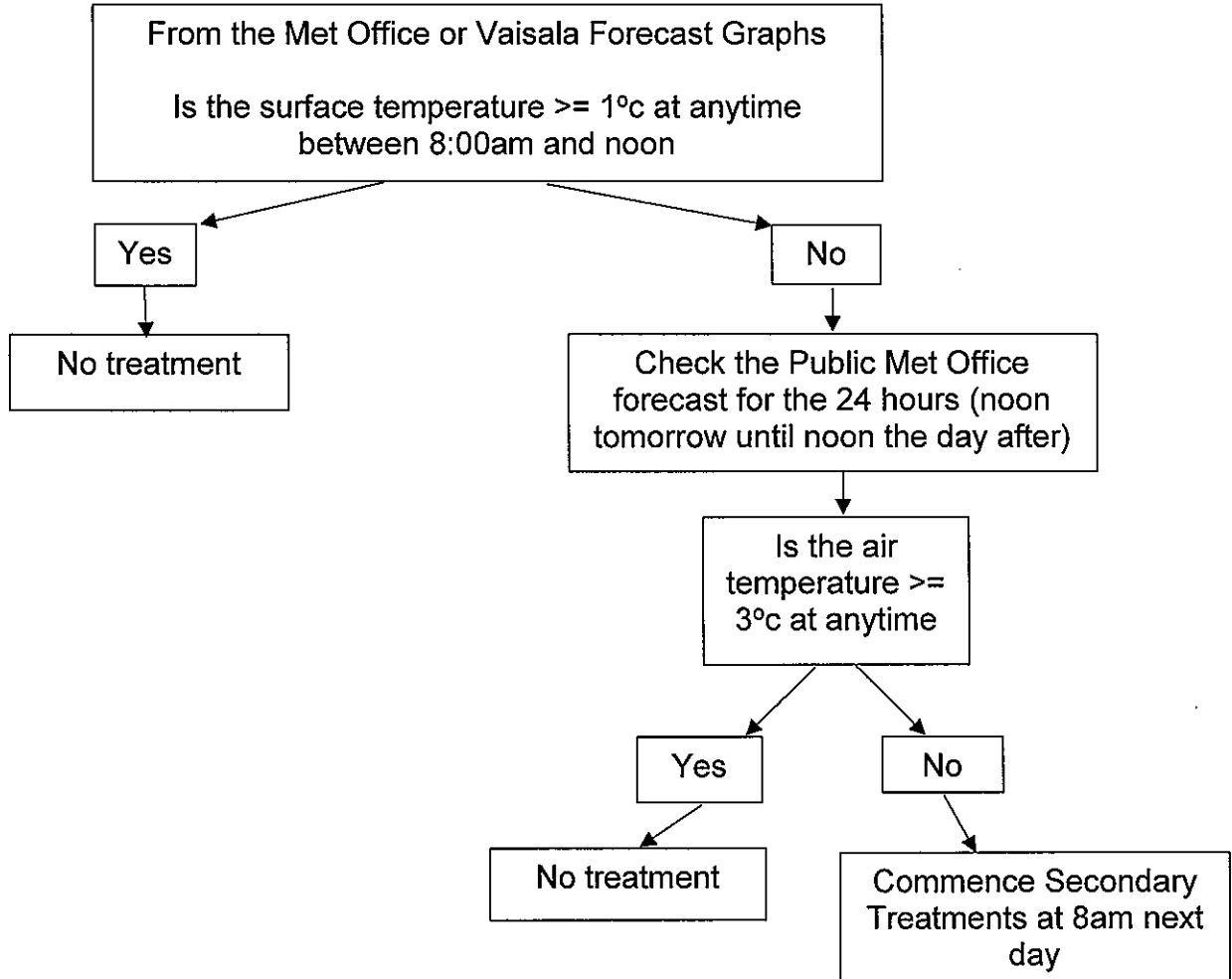
If both the surface temperature is below 1°C and the air temperature is forecast to be below 3°C then instruct treatment from 8am next day.

If treatment has been instructed:

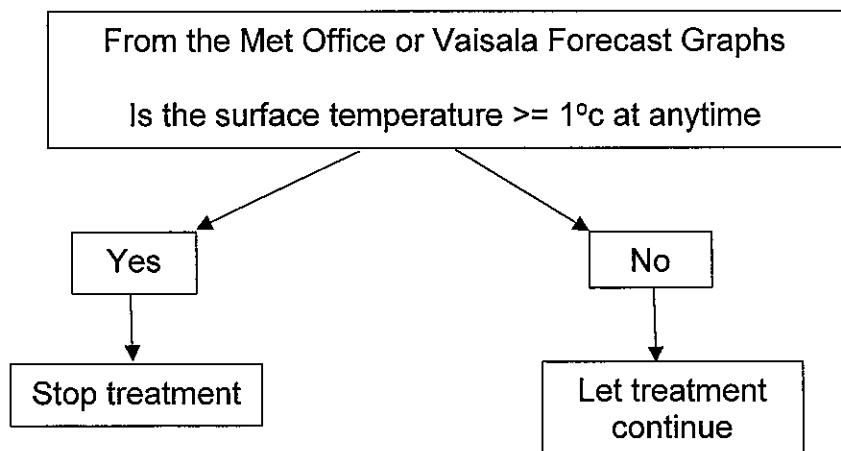
When the Met Office 24 hour forecast comes in check the graphs and if the forecast surface temperature will, at any time, be 1°C or above instruct treatment to stop.

Decision Matrix for P3 Roads

Upon receipt of the Met Office lunch time forecast



If F3 footways are currently being treated upon receipt of the Met Office lunch time forecast



Forecast Sites to be Checked

Route	Forecast Weather Station	Met Office Forecast Site
Banff & Buchan		
S1 Fordyce	A98 Boyndie	Portsoy
S2 Ordiquill	A98 Boyndie	Aberchirder
S3 Aberchirder	A98 Boyndie	Aberchirder
S4 Crovie	A98 Boyndie	Macduff
Buchan		
S9 New Aberdour	A90 Toll of Birness	New Pitsligo
S10 New Deer	A90 Toll of Birness	Maud
S11 Strichen	A90 Toll of Birness	Strichen
S12 St Fergus	A90 Toll of Birness	Rattray Bay
S13 Maud	A90 Toll of Birness	Maud
S14 Peterhead	A90 Toll of Birness	Peterhead
Formartine		
S5 New Byth	A947 Oldmeldrum	Turriff
S6 Haddo	A947 Oldmeldrum	Fyvie Castle
S7 Cuminestown	A947 Oldmeldrum	Turriff
S8 Rothienorman	A947 Oldmeldrum	Fyvie Castle
S19 Methlick	A947 Oldmeldrum	Ellon
S20 Dudwick	A90 Toll of Birness	Ellon
S21 Collieston	A90 Toll of Birness	Ellon
S22 Oldmeldrum	A947 Oldmeldrum	Oldmeldrum
S23 Ellon	A90 Toll of Birness	Ellon
S24 Pitmedden	A947 Oldmeldrum	Oldmeldrum
S25 Balmedie	A90 Toll of Birness	Ellon
Garioch		
S26 Daviot	A947 Oldmeldrum	Daviot
S27 Inverurie	A947 Oldmeldrum	Inverurie
S28 Kintore	A96 Tyrebagger	Kintore
S29 Monymusk	A944 Tillyfourie	Monymusk
S30 Skene	A944 Westhill	Kirkton of Skene
S16 Drumblade	A944 Tillyfourie	Huntly
S17 Forgue	A944 Tillyfourie	Aberchirder
Marr		
S15 Glass	A944 Tillyfourie	Huntly
S18 Kennethmont	A944 Tillyfourie	Huntly
S31 Rhynie	A944 Tillyfourie	Huntly
S32 Strathdon	A944 Tillyfourie	Alford
S33 Cushnie	A944 Tillyfourie	Tarland
S34 Braemar	A93 Ballater	Braemar
S35 Ballater	A93 Ballater	Ballater
S36 Tarland	A93 Ballater	Tarland
S37 Lumphanan	A944 Tillyfourie	Lumphanan
S38 Banchory	A944 Tillyfourie	Banchory
S39 Drumoak	A944 Westhill	Drumoak
S40 Durriss	A944 Westhill	Drumoak
S41 Cairn O'Mount	A90 Laurencekirk	Strachan
Kincardine & Mearns		
S42 Netherley	A90 Laurencekirk	Rickarton
S43 Stonehaven	A944 Westhill	Stonehaven
S44 Catterline	A90 Laurencekirk	Inverbervie
S45 Auchenblae	A90 Laurencekirk	Auchenblae
S48 Inverbervie	A90 Laurencekirk	Inverbervie
S46 Luthermuir	A90 Laurencekirk	Laurencekirk
S47 Laurencekirk	A90 Laurencekirk	Laurencekirk