

## Low Cost Shared Equity

### Property Schedule



**Year Built:** 2011

**Gross Internal Floor Space:**  
Approximately 74 square meters

**Accommodation:**  
3 bedroom semi-detached bungalow

Entrance Hall, lounge, three bedrooms, kitchen & bathroom with w.c.

**Parking Arrangements:**  
Off street parking on drive

**Garden:**  
Private garden ground to front and rear of property.

**Council Tax Band:** D

**Heating Type:**  
Gas Central Heating

**Address:** 8 Thomson Road,  
Peterhead, AB42 3FJ

**Location:**



**Factoring Charge:** £160 per year for grass cutting

**Price:** £113,900

**Income Threshold:** £42,000

**Closing Date:**  
**Applications assessed on a first come basis**

**Eligibility Criteria:**  
Please see guidance notes for details of Eligibility Criteria

**Further Information:**  
For further information please contact:  
Development Officer - 01467 539457  
[LCHO@aberdeenshire.gov.uk](mailto:LCHO@aberdeenshire.gov.uk)

The information in this schedule has been supplied by the owner and whilst every care has been taken in the preparation of this schedule and the information is believed to be correct, it does not warrant or constitute any offer or contract.

**Hallway**



**Living Room**



**Alternative View of Living Room**



**Kitchen**



**Alternative View of Kitchen**



**Master Bedroom**



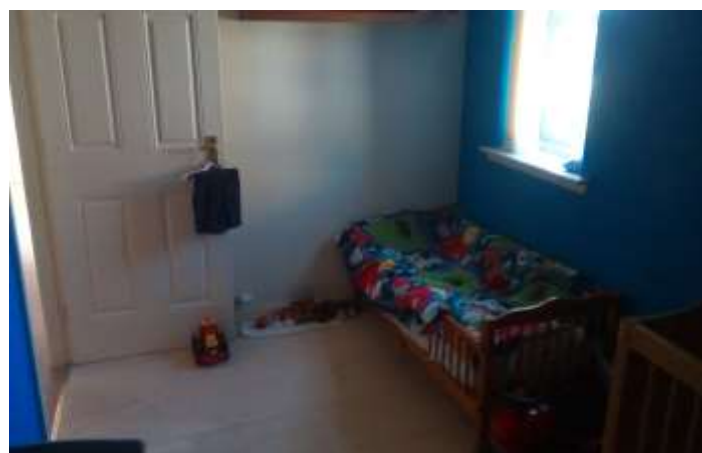
**Bedroom 2**



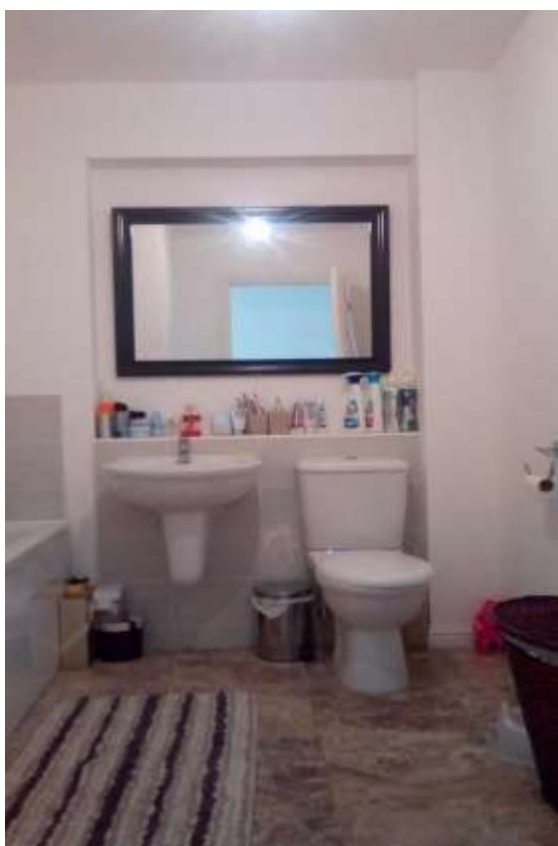
**Bedroom 3**



**Alternative View of Bedroom 3**



**Bathroom**



## Rear Garden



## Driveway

