

LCT 9: COASTAL STRIP

The *Coastal Strip* LCAs lie south of Peterhead, surround Aberdeen and extend to the boundary with Angus. They are mainly narrow, usually 1km or less in width, so limited in extent. They comprise a mixture of rocky cliffs and coves, raised beaches and sections of coast with active dune systems. Areas of farmland merge into coastal grasslands and scrub, or end abruptly at a beach or cliff. All are defined by their general openness and exposure to coastal views and weather. Inland most of these LCAs merge with the *Agricultural Heartland* LCAs. They are visually sensitive due to their value as a recreational destination and large number of visitors.

9 (i) KINCARDINE CLIFFS

This *Coastal Strip* comprises steep rugged slopes and cliffs, with stacks and arches. Raised beaches are a common feature and give a stepped profile to the coastline. Cliffs slacken and vegetate south of Stonehaven. There is a very simple pattern of fields on the slightly flatter areas above the cliffs, these run to the cliff edge, with areas of uncultivated ground limited to inaccessible areas. Trees are scarce with field boundaries simple gorse hedges, or post and wire fences. Settlements like Catterline cluster on clifftops with older villages and harbours on raised beaches at the base of cliffs. The dramatic cliff top castle of Dunottar is an iconic part of this coast.

9(ii) FORMARTINE LINKS AND DUNES

In the other characteristic type of *Coastal Strip* landscape, the extensive dunes have wide beaches, dynamic dune systems, open views and tree cover limited to estate policies such as Menie and Foveran. Close to the estuary of the River Ythan is an area of undeveloped coast at Forvie. Settlements are limited to Newburgh and Balmedie, other elements such as golf courses, quarries, firing ranges and the A90 are an indication of the proximity of Aberdeen.

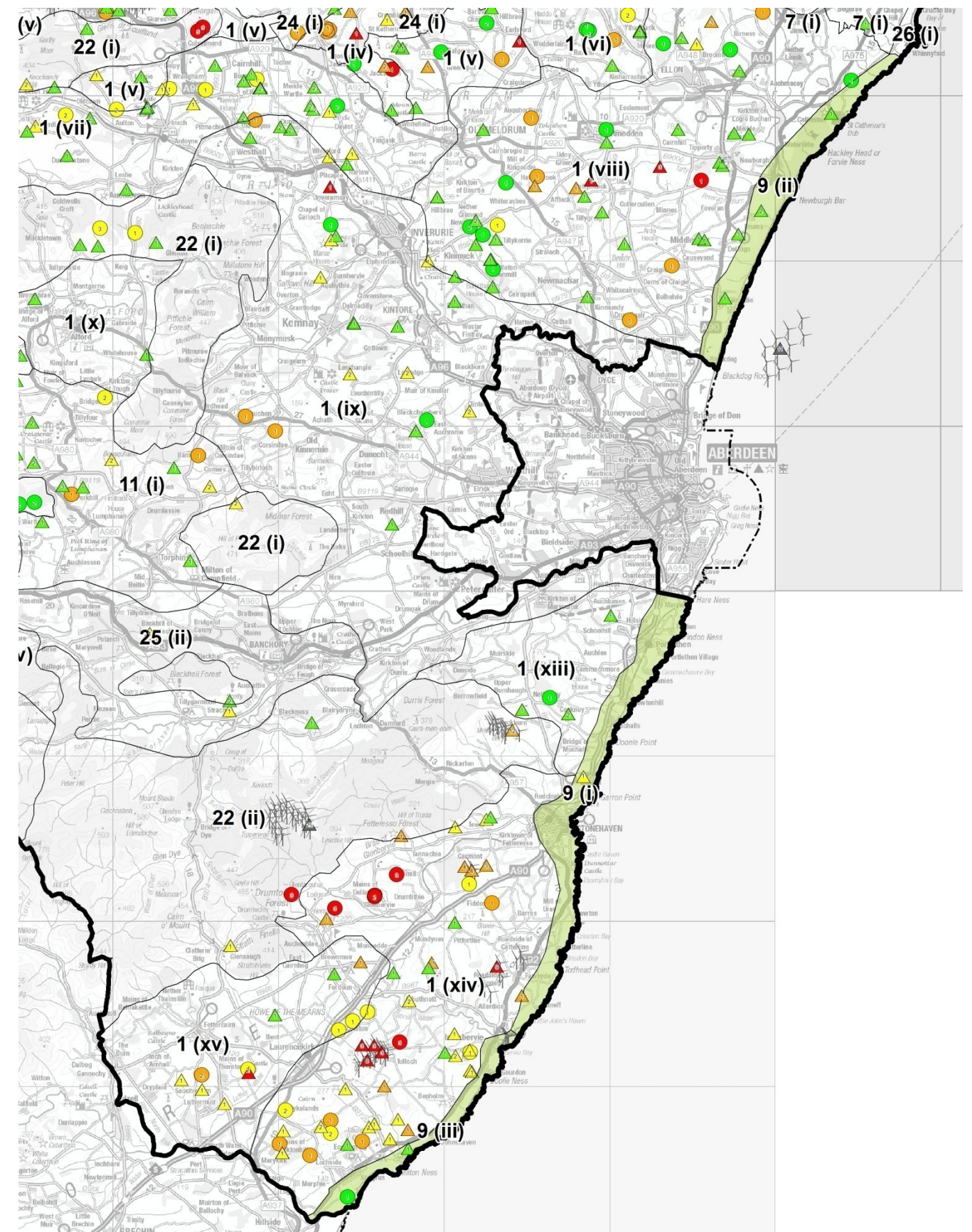
9 (iii) KINCARDINE LINKS

This stretch of coast is gently sloping with wide, low raised beaches backed by sloping cliffs. There are steeper volcanic cliffs south of St Cyrus and the estuary of the North Esk. A simple pattern of large fields runs to the top of cliffs with few field boundaries. Tree cover is limited, and those that have grown are sculpted by the wind. Traditional villages are perched on the top of cliffs, with caravan sites at the base of sloping cliffs and farms on the tops.



9(i) Catterline harbour at the base of the sloping cliffs

9(ii) The wide estuary of the Ythan is undeveloped.



LANDSCAPE CHARACTER TYPE: 9. COASTAL STRIP																		
Key: <input type="radio"/> No Capacity <input type="radio"/> Low Capacity <input type="radio"/> Medium Capacity <input type="radio"/> High Capacity																		
Turbine Size: Small/Medium=15-<30m; Medium=30-<50m; Medium/Large=50-<80m; Large=80m+; Very Large=125m+																		
BASE LANDSCAPE CAPACITY (ie. not taking account of current wind energy development)					CURRENT CONSENTED DEVELOPMENT					PROPOSED LIMITS TO FUTURE DEVELOPMENT (ie. proposed acceptable level of wind energy development)								
Landscape Sensitivity to Wind Energy Development				Landscape Capacity (Related to turbine size)					Existing/ Consented Developments	Current Wind Energy Landscape Type(s)	Future Wind Energy Landscape Type(s)	Remaining Landscape Capacity (Related to turbine size)					Current Applications	Analysis & Guidelines (Refer to Detailed Guidance for Further Information on Siting and Design)
Landscape Character Sensitivity	Visual Sensitivity	Landscape Sensitivity	Landscape Value	S/M	M	M/L	L	VL				S/M	M	M/L	L	VL		
9 (iii) Landscape Character Areas: Kincardine Links																		
Med/High	High	Med/High	High	<input checked="" type="radio"/>	<input type="radio"/>	<input type="radio"/>	<input type="radio"/>	<input type="radio"/>	Current development limited to four small/medium turbines. Six small/medium turbines located along the edge of this LCA in the Formantine Lowlands	The Coast with No Wind Turbines/ The Coast with Occasional Wind Turbines	The Coast with Occasional Wind Turbines	<input checked="" type="radio"/>	<input type="radio"/>	<input type="radio"/>	<input type="radio"/>	<input type="radio"/>	Landscape Analysis: Due to its limited extent (regionally), scale, visibility and high value there is potential for very occasional single small/medium turbines sited in less prominent areas with some landform/ tree backclothing. Comments on Consented and Proposed Turbines: Several medium and medium/large turbines have been built at the eastern/southern edge of the adjoining Agricultural Heartland LCA, these have a strong visual influence on parts of the Coastal Strip and limit the capacity for future development of this LCA. In particular between Johnshaven and St Cyrus and west of Gourdon.	

GUIDANCE: LCT 9: COASTAL STRIP

9 (iii) KINCARDINE LINKS

Proposed Limits to Future Development: Coast with Occasional Wind Turbines

Turbine Sizes: 15-<30m (small/medium);

Group Sizes: 1-3 (small/medium);

Separation Distances: 4-6km (small/medium).

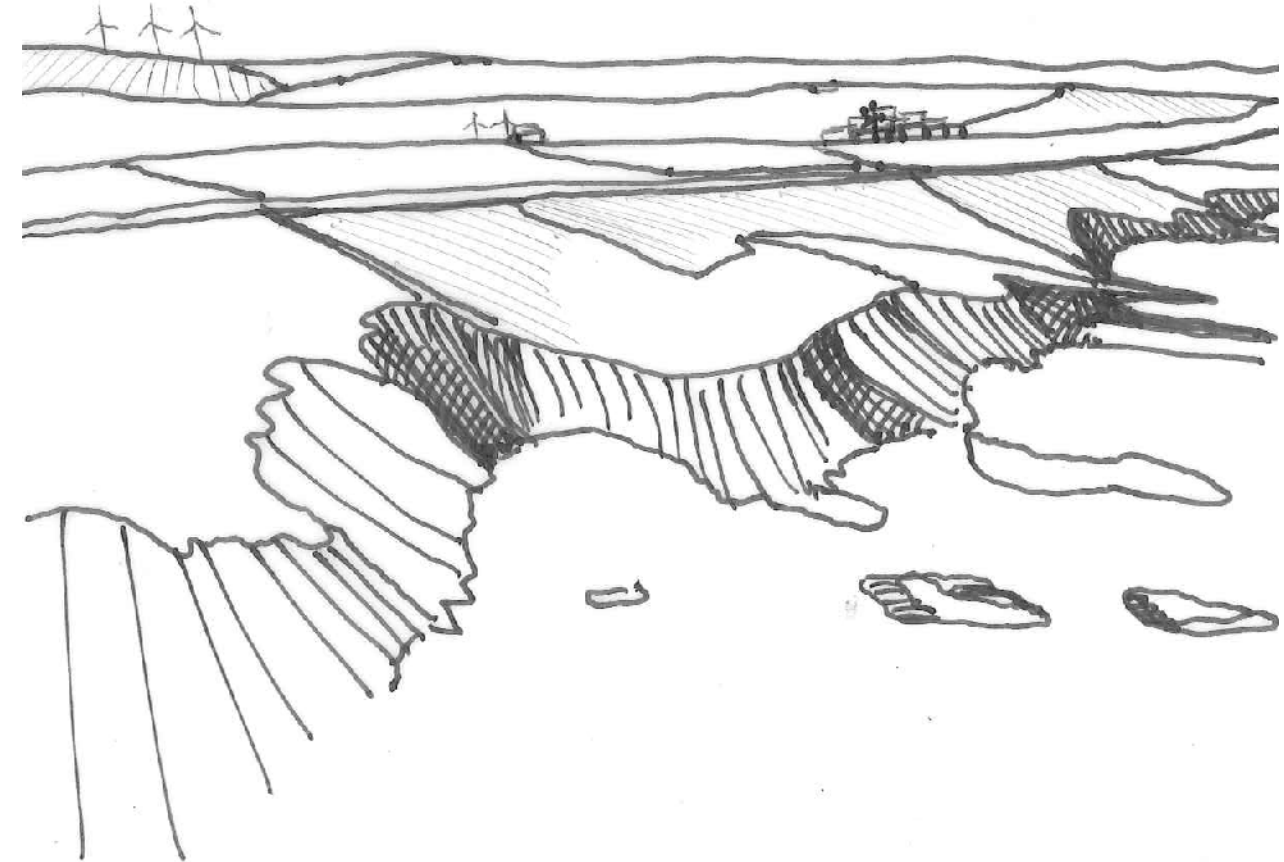
Detailed Guidance

Whilst the open windswept character is suitable for wind energy, larger scale turbines would be highly intrusive, being highly visible against the sea and sky and out of scale with the limited extent of the landform, low buildings and wind-pruned trees.

Turbines should be sited where they can be associated with built development, away from the more complex or diverse features such as the dune systems, rocky promontories, raised beach land forms and the coastal edge itself. Given the expansive nature of this coast and wide vistas, turbines should be widely spaced.

Where there are two or three closely located applications for single turbines of the same size, exploit opportunities for clustering as a group in preference to separation. Consideration is given in the *Agricultural Heartland* guidance to ensuring larger turbines in the neighbouring LCAs do not dominate the coastal strip.

There is currently development limited to four small/medium turbines and no applications.



Large turbines should be set well back into the Agricultural Heartland with turbines under 30m associated with development well within the coastal strip. Turbines should be sited away from the coastal edge itself and features such as the dune systems, rocky promontories, raised beach land forms. Any turbines sited on this edge would visually dominate and be highly intrusive in this coastal landscape.