

Towards the very best

Applying for Early Years Pre-School Education for your Child

Session 2012-13

Ubieganie się o Miejsce w Przedszkolu dla Twojego Dziecka

Подача заявления на дошкольное образование Вашего ребенка

Jūsū bērna pieteikšana uz Pirmsskolas Izglītību

Kreipimasis dėl Iki-mokyklinio jūsų vaiko išsilavinimo



Aberdeenshire 
COUNCIL

Serving Aberdeenshire from mountain to sea – the very best of Scotland

Eligible Children

This information is applicable to children born between

1 March 2008 and 28 February 2010

You do not need to complete an application if your child is already in a funded pre-school education placement and you wish him/her to continue in the same pre-school. In the very exceptional circumstances where a delayed entry is being considered, please discuss this with the school where you intend to enrol your child for Primary 1. If in doubt seek advice from your pre-school setting.

Submission Dates

Application forms will be available from provider of choice from the 23 January 2012

For parents wishing to access places at Partner Providers only:

Please complete an application form and submit it to the Partner Provider of your choice at any point of the year.

For parents wishing to access places at **Local Authority Nurseries only:**

Please submit your Pre-school Education Application Form to your choice of setting by:

2 March 2012 for admission in August 2012 and January 2013

1 October 2012 for admissions in April 2013

Required Supporting Documentation

Please present the following with your application form:

1. Your child's birth certificate.
2. Evidence of your home address, for example a recent (last 3 months) utility bill or bank statement.

These original documents will not be retained by the pre-school setting.

Offer of placement at Local Authority Nurseries

Please note places at Local Authority Nurseries are limited and we are therefore unable to guarantee a place in one of Aberdeenshire provisions.

1. Applications received by 2 March 2012 will normally be offered a place by 16 April 2012.
2. Applications received by 1 October 2012 will normally be offered a place by 3 December 2012.

Welcome to this years Parent and Carers guidance for admissions to pre-school.

There have been a number of changes over the last year; the most substantial of these is the change from the Local Authority centrally allocating places, to a more parent led approach. This means parents are able to choose what provision best meets their child's needs.

Additionally parents will be able to access pre-school provision with one of our Partner Providers at any point during the year. Schools will continue to have specific application deadlines but will now have two application deadlines per year; rather than just one. This has been done in recognition of how much children's needs can change in a relatively short period of time in the early years.

Parents will appreciate that not all children will be able to be accommodated in their preferred provision. However, we are committed to incorporate the views of parents in planning provision in Aberdeenshire, so please take all opportunities to share your view within annual needs assessments.



Aberdeenshire Council's 3–18 Curriculum Framework supports schools and learning communities in organising, and delivering consistent learning experiences that meet the entitlements and needs of individual learners from age 3 to 18.

Aberdeenshire Council establishes a culture of respect, care and ambition for our children and young people.

Aberdeenshire pre-school settings offer the following:

- Staff who recognise that you are the biggest influence on your child's development
- Welcoming and inclusive experiences that are planned to build on the individual talents and needs of your child
- Effective learning and teaching that makes your child's learning creative, relevant, lively, active and fun
- Smooth transition experiences that support your child with the development of their social and emotional skills

When is my child entitled to free pre-school education?

Every child is entitled to a free part-time education place at the start of the term following their third birthday. This means:

- Children who will be three by 31 August start pre-school in August
- Children who will be three by 31 December start pre-school in January
- Children who will be three by the last day of February start pre-school in April

*** NOTE your child must be three before she/he starts pre-school education**

This means that all children will be entitled to between four and six terms of pre-school education.

Your child is entitled to five sessions each week, for 38 weeks during term time.

Is my child able to start before her/his pre-school entitlement commences?

Many of the partners in the independent and voluntary sector offer provision for children under the age of entitlement. However, you will have to pay for this.

Where can my child access free pre-school education in Aberdeenshire?

Early Years Pre-school Education in Aberdeenshire is available at a variety of different settings including:

- **Aberdeenshire Council Nursery Classes** – provide free pre-school education.
- **Playgroups** – are non-profit making groups, usually managed by a committee. They offer funded pre-school education places and some may also offer wrap around care. Parents may be expected to help on a rota basis.
- **Private Day Nurseries** – offer pre-school education and childcare. They are usually open from 8 am to 6 pm.

All settings listed overleaf work in partnership with Aberdeenshire Council to provide early years pre-school education. They are registered with the Care Inspectorate and are subject to inspection by the Care Inspectorate, HMIe and the Council's own quality assurance procedures.

What makes a good pre-school setting?

Before making your decision you may wish to visit a few pre-school settings. Telephone the setting to make an appointment to ensure that staff have time to talk with you and answer any questions. Good settings will have:

- A welcoming and friendly environment
- Children who are happy and who are fully involved in what they are doing
- Regular access to outside play areas

- Good quality play equipment and toys
- Individual plans for each child which record learning progress

Staff should be happy to tell you about the qualifications they hold and if they are working towards others. They should also be able to talk to you about the learning environment and opportunities provided. For further information see *Parent Guide 2010/2012* available at www.aberdeenshire.gov.uk/children/afis/childcare.asp or from the Family Information Service on **0800 298 3330** or at afis@aberdeenshire.gov.uk.

Do I have the right to send my child to the pre-school setting of my choice?

Aberdeenshire Council has a duty to secure part time pre-school funded places and offers choice across a range of private and voluntary sector provision in addition to nursery classes. This is within a context of the need for best value and quality of provision. It should be noted that Aberdeenshire Council cannot guarantee a place in your provider of choice.

Admission to a pre-school nursery class does not automatically ensure a place in Primary One if your child lives outwith the school's catchment area. Transport to and from a pre-school setting is not provided or funded by Education, Learning & Leisure.

How does my child access free pre-school education in a private day nursery?

You can access your entitlement of five sessions over a minimum of 2.5 days of each week, term time only. However, there must be at least one hour between the morning and afternoon sessions. Complete an application form in the normal way and submit it to the private day nursery. You may be charged for services provided in excess of the pre-school education sessions and outwith the school term.

My child is already accessing funded pre-school education in a nursery class, playgroup or private day nursery. Do I need to apply?

There is no need to complete any forms if you wish your child to remain in their existing pre-school setting. They will automatically be included for the forth coming session.

However, if you wish to move your child from one setting to another setting, you must submit a new application for the forthcoming session and alert your existing setting as soon as possible.

If you have any questions please discuss this with your current pre-school setting.

Can I transfer my child from one pre-school setting to another?

You may transfer from one pre-school setting to another if reasonable reasons exist to do so.

These may include (but are not limited to):

- you move house
- your child's significant support needs warrant it
- you change your pre-school place because you need to access wrap-around care
- there is a significant change in your home circumstances.



Can I split my child's place between providers?

Split placements will be granted in exceptional circumstances with the agreement of the Early Years Manager if your child's significant support needs warrant it. If you would like to request a form for split placement please contact the Early Years Manager.

Should I delay my child's entry into Primary One?

If you are uncertain as to whether your child is ready to start school you may find it helpful to discuss this with the Head Teacher or Manager of the setting your child currently attends.

If your child is born between **1 January and 28 February 2008**, she/he has a statutory right to delay entry, therefore you need only complete Section A of the Delayed Entry Request Form and submit it to the Pre-School Setting of your choice. This form can be obtained from the pre-school setting of your choice.

If your child is born between the **first day of the Autumn Term and 31 December 2007** and you wish to delay your child's entry to Primary One, you should initially discuss this with the Head Teacher of the school where you intend to enrol your child for Primary One. Following this discussion, if you then wish to proceed, please submit a Delayed Entry Request Form together with an Admission Form A to this primary school. These forms are available from the primary school.

My child has significant additional support needs, how will her/his application be considered?

For all children born between August and December 2007 and children with significant additional support needs applications must be supported by information held in the child's personal learning plan/profile and, where appropriate, copies of reports from other agencies. This information should outline the concerns about your child's development and the proposed plan and support to be offered by the agencies and pre-school setting. You will be asked

to complete a Multi-Agency Consent Form (Children's Services) as it is normal practice to seek information and opinions from other professionals/agencies and to share information with them concerning your child.

An Inter-Agency Panel Meeting will then discuss your child's needs. This Panel will make a recommendation on your application which will be considered at the Children's Services Network Pre-School Admissions Meeting. All agencies will keep information confidential in accordance with their procedures.

How do I apply for a pre-school education place?

- Application forms should be obtained from, and returned to, the setting of your choice. Alternatively you may download an application from Aberdeenshire Council's website www.aberdeenshire.gov.uk/parents/carers/pre_school/index.asp. This form should be returned to the setting of your choice.
- Please ensure you indicate your choice on your application form.
- Only one application must be made for each eligible child.
- If your child has significant additional support needs, please contact the Head Teacher/Manager of your setting of your choice for more information.
- All parents must use the Early Education Pre-School Application Form Session 2012-13 to apply for a pre-school education place for their child.
- The pre-school setting will contact you to advise the outcome of your application.

If you have queries regarding your Early Years Pre-School Education Application Form please contact the setting of your choice who should be able to advise you.

The following pages list all Aberdeenshire Council pre-school education settings by Children's Services Network (CSN).

Aboyne CSN

Aberdeenshire Council Nursery Schools

| Setting Name | Telephone Number |
|-------------------------|------------------|
| Aboyne School Nursery | 01339 886 638 |
| Ballater School Nursery | 01339 755 419 |
| Ballogie School Nursery | 01339 886 765 |
| Braemar School Nursery | 01339 741 250 |
| Tarland School Nursery | 01339 881 204 |
| Torphins School Nursery | 01339 882 269 |

Playgroups

| | |
|----------------------|---------------|
| Lumphanan Pre-school | 01339 883 740 |
| Tarland Playgroup | 01339 881 204 |
| Torphins Playgroup | 01339 882 978 |

Private Day Nurseries

| | |
|-----------------------------|---------------|
| Roselodge Nursery, Aboyne | 01339 887 527 |
| Roselodge Nursery, Ballater | 01339 853 267 |
| Sunshine Nursery, Torphins | 01339 882 929 |



Alford CSN

Aberdeenshire Council Nursery Schools

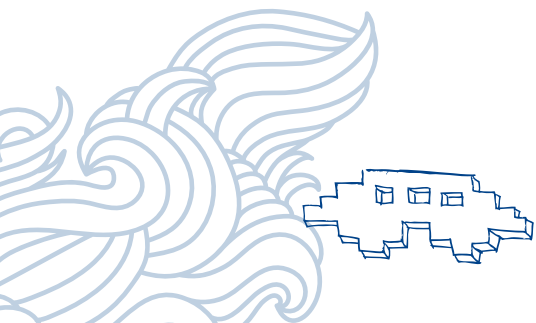
| Setting Name | Telephone Number |
|----------------------------|------------------|
| Alford School Nursery | 01975 562 395 |
| Echt School Nursery | 01330 860 510 |
| Towie School Nursery | 01975 641 247 |
| Tullynessle School Nursery | 01975 562 365 |

Playgroups

| | |
|--------------------|---------------|
| Alford Playgroup | 01975 563 505 |
| Monymusk Playgroup | 07709 799 159 |

Private Day Nurseries

| | |
|--------------------|---------------|
| Alford Day Nursery | 01975 562 360 |
|--------------------|---------------|



Banchory CSN

Aberdeenshire Council Nursery Schools

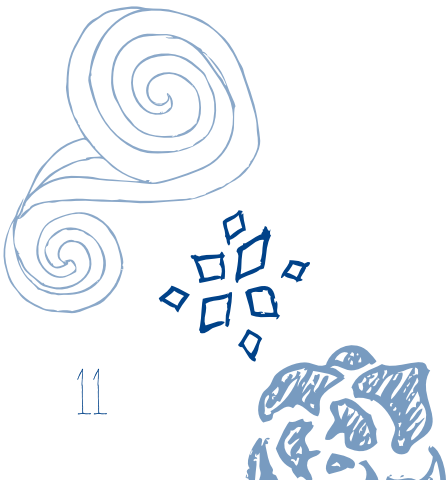
| Setting Name | Telephone Number |
|-----------------------------------|------------------|
| Banchory Nursery School | 01 330 823 351 |
| Crossroads Nursery School, Durris | 01 330 844 685 |
| Hill of Banchory School Nursery | 01 330 825 500 |

Playgroups

| | |
|------------------------------|---------------|
| Woodside Playgroup, Banchory | 07895 003 896 |
|------------------------------|---------------|

Private Day Nurseries

| | |
|--------------------------------|----------------|
| Celtic Cross Nursery, Banchory | 01 330 824 744 |
|--------------------------------|----------------|



Banff CSN

Aberdeenshire Council Nursery Schools

| Setting Name | Telephone Number |
|----------------------------|------------------|
| Aberchirder School Nursery | 01466 780 241 |
| Banff School Nursery | 01261 813 100 |
| Macduff School Nursery | 01261 832 665 |
| Ordiquhill School Nursery | 01466 751 203 |
| Portsoy School Nursery | 01261 842 238 |
| Whitehills School Nursery | 01261 861 431 |

Playgroups

| | |
|---------------------------------|---------------|
| Banff Playgroup | 07786 099 356 |
| Gardenstown (Gamrie) Playschool | 01261 851 917 |
| Whitehills Playgroup | 01261 861 431 |



Ellon CSN

Aberdeenshire Council Nursery Schools

| Setting Name | Telephone Number |
|---------------------------------|------------------|
| Auchterellon School Nursery | 01 358 720 863 |
| Balmedie School Nursery | 01 358 742 474 |
| Ellon School Nursery | 01 358 720 692 |
| Meiklemill School Nursery | 01 358 721 852 |
| Newburgh Mathers School Nursery | 01 358 789 283 |

Playgroups

| | |
|---|----------------|
| Auchnagatt & District Pre-School Setting (Arnage School) - also Mintlaw | 07914 667 691 |
| Auchterellon Under 5s | 07753 222 144 |
| Collieston & District Under 5s Group | 01 358 751 204 |
| Gordon Park Playgroup, Ellon | 07587 174 339 |
| Hatton (Cruden) PG & Under 3s | 07929 919 446 |
| Newburgh Playgroup | 01 358 789 461 |

Private Day Nurseries

| | |
|---------------------------------------|----------------|
| Banbury Cross Nursery (Bridge of Don) | 01 224 702 300 |
| Links Nursery | 01 358 743 094 |
| Stepping Stones Nursery, Ellon | 01 358 724 343 |

Fraserburgh CSN

Aberdeenshire Council Nursery Schools

| Setting Name | Telephone Number |
|---------------------------------------|------------------|
| Crimond School Nursery | 01346 532 251 |
| Fraserburgh North School Nursery | 01346 518 015 |
| Fraserburgh South Park School Nursery | 01346 518 586 |
| Inverallochy School Nursery | 01346 582 217 |
| Lochpots School Nursery | 01346 515 751 |
| Rosehearty School Nursery | 01346 571 230 |
| Sandhaven School Nursery | 01346 518 202 |
| St Andrews School Nursery | 01346 518 247 |

Playgroups

| | |
|----------------------|---------------|
| Auld Kirk Nursery | 01346 517 352 |
| Rosehearty Playgroup | 01346 572 002 |

Private Day Nurseries

| | |
|------------------------|---------------|
| Kiddiwinks Nursery Ltd | 01346 510 600 |
| Peek-a-Boo Nursery | 01346 511 334 |
| Playbarn Nursery | 01346 519 439 |
| The Happy Days Nursery | 01346 511 005 |

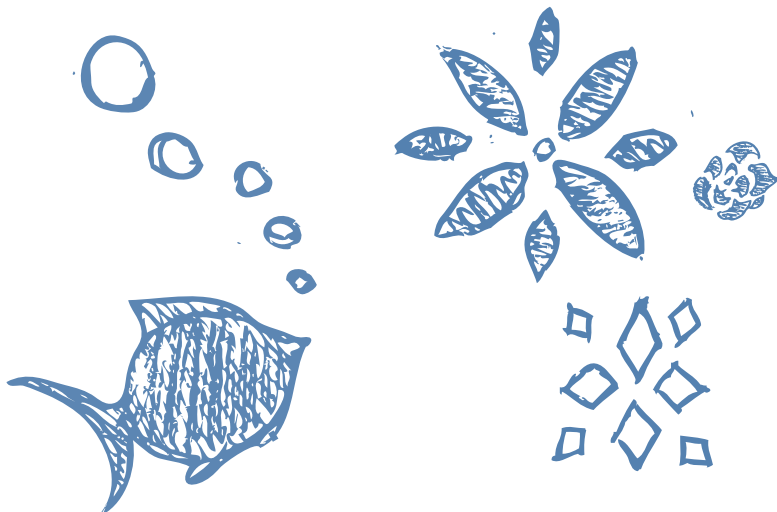
Huntly CSN

Aberdeenshire Council Nursery Schools

| Setting Name | Telephone Number |
|--------------------------|------------------|
| Cairney School Nursery | 01466 760 202 |
| Drumblade School Nursery | 01466 740 228 |
| Gartly School Nursery | 01466 720 270 |
| Glass School Nursery | 01466 700 210 |
| Gordon School Nursery | 01466 792 550 |
| Insch School Nursery | 01464 820 252 |
| Rhynie School Nursery | 01464 861 257 |

Private Day Nurseries

| | |
|--------------------------|---------------|
| The Kindergarten, Huntly | 01466 794 525 |
|--------------------------|---------------|



Inverurie CSN

Aberdeenshire Council Nursery Schools

| Setting Name | Telephone Number |
|---------------------------------|------------------|
| Kellands School Nursery | 01467 620 153 |
| Market Place School Nursery | 01467 620 451 |
| Newmachar School Nursery | 01651 862 245 |
| Port Elphinstone School Nursery | 01467 621 277 |
| Strathburn School Nursery | 01467 621 143 |

Playgroups

| | |
|------------------------------|---------------|
| New Machar Playgroup | 01651 863 190 |
| St Andrew's Church Playgroup | 07854 043 011 |
| Strathburn Park Playgroup | 01467 622 780 |

Private Day Nurseries

| | |
|------------------------------------|---------------|
| Flowerpots Childcare | 01651 869 078 |
| Les Enfants Nursery | 01467 623 240 |
| Stepping Stones Nursery, Inverurie | 01467 625 295 |
| Summers Nursery Ltd | 01467 628 862 |
| Wee Angels, Oyne | 01464 851 431 |



Kemnay CSN

Aberdeenshire Council Nursery Schools

| Setting Name | Telephone Number |
|------------------------------|------------------|
| Alehousewells School Nursery | 01467 642 247 |
| Kemnay School Nursery | 01467 642 259 |
| Kinellar School Nursery | 01224 790 235 |
| Kintore School Nursery | 01467 634 380 |

Playgroups

| | |
|--------------------|---------------|
| Kinellar Playgroup | 01224 790 861 |
| Kintore Playgroup | 01467 634 386 |

Private Day Nurseries

| | |
|--------------------------|---------------|
| Cherry Tree Pre-school | 01224 790 044 |
| Wee Rascals, Kintore | 01467 633 270 |
| Wee Rascals Too, Kintore | 01467 633 994 |



Laurencekirk CSN

Aberdeenshire Council Nursery Schools

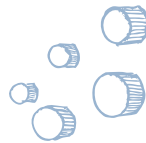
| Setting Name | Telephone Number |
|-----------------------------|------------------|
| Auchenblae School Nursery | 01561 320 249 |
| Fettercairn School Nursery | 01561 340 250 |
| Laurencekirk School Nursery | 01561 378 588 |
| St Cyrus School Nursery | 01674 850 215 |

Playgroups

| | |
|-------------------------------|---------------|
| Auchenblae Pre-school | 07974 799 014 |
| Mearns Pre-school Playgroup | 07812 719 811 |
| St Cyrus Pre-school Playgroup | 07901 591 118 |

Private Day Nurseries

| | |
|------------------------|---------------|
| Poppies Pre-school Ltd | 01561 376 274 |
|------------------------|---------------|



Meldrum CSN

Aberdeenshire Council Nursery Schools

| Setting Name | Telephone Number |
|-----------------------------|------------------|
| Meldrum School Nursery | 01651 871 100 |
| Pitmedden School Nursery | 01651 842 374 |
| Rothienorman School Nursery | 01651 821 247 |
| Tarves School Nursery | 01651 851 247 |

Playgroups

| | |
|-----------------------------------|---------------|
| Daviot Playgroup | 07792 967 523 |
| Methlick Playgroup | 01651 871 323 |
| Old Rayne Playgroup | 01651 806 932 |
| Pitmedden Playgroup | 07968 046 806 |
| Rothienorman Pre-school | 07713 914 766 |
| Tarves Pre-school | 01651 821 577 |
| Udny Station Pre-school Playgroup | 07855 216 556 |

Private Day Nurseries

| | |
|-----------------------------|---------------|
| Hoodles Nursery, Oldmeldrum | 01651 873 995 |
|-----------------------------|---------------|

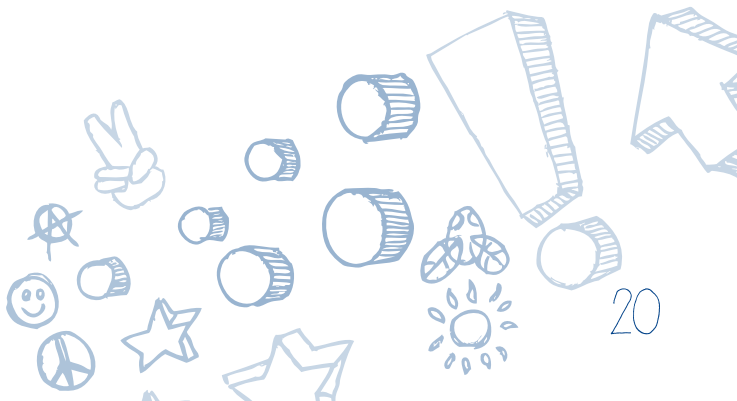
Mintlaw CSN

Aberdeenshire Council Nursery Schools

| Setting Name | Telephone Number |
|---|------------------|
| Longside School Nursery | 01779 821 233 |
| Mintlaw School Nursery | 01771 623 549 |
| New Deer School Nursery | 01771 644 265 |
| New Pitsligo & St John's School Nursery | 01771 653 232 |
| Pitfour School Nursery | 01771 622 855 |
| Strichen School Nursery | 01771 637 250 |

Playgroups

| | |
|--|---------------|
| Auchnagatt & District Pre-school Centre (Arnage School) – also Ellon | 07914 667 691 |
| Maud Playgroup & Rising Fives | 07762 943 804 |
| Strichen Playgroup | 07761 388 552 |



Peterhead CSN

Aberdeenshire Council Nursery Schools

| Setting Name | Telephone Number |
|----------------------------------|------------------|
| Boddam School Nursery | 01779 473 359 |
| Buchanhaven School Nursery | 01779 472 543 |
| Clerkhill School Nursery | 01779 472 473 |
| Dales Park School Nursery | 01779 477 133 |
| Meethill School Nursery | 01779 474 920 |
| Peterhead Central School Nursery | 01779 472 211 |
| Port Erroll School Nursery | 01779 812 622 |
| St Fergus School Nursery | 01779 838 225 |

Playgroups

| | |
|------------------|---------------|
| Boddam Playgroup | 01779 490 826 |
|------------------|---------------|

Private Day Nurseries

| | |
|---|---------------|
| Buoys and Gulls | 01779 476 888 |
| Bright Beginnings | 01779 473 103 |
| Clever Tots Nursery | 01779 481 652 |
| First Class Day Nursery | 01779 474 156 |
| Stepping Stones Nurseries (Peterhead) Ltd | 01779 481 344 |
| Vital Sparks Nursery | 01779 482 330 |



Portlethen CSN

Aberdeenshire Council Nursery Schools

| Setting Name | Telephone Number |
|--|------------------|
| Fishermoss School Nursery | 01224 782 277 |
| Lairhillock School (see also Stonehaven) | 01569 732 520 |
| Newtonhill School Nursery | 01569 730 597 |
| Portlethen School Nursery | 01224 780 238 |

Playgroups

| | |
|---------------------|---------------|
| Bourtree Pre-school | 01224 782 472 |
|---------------------|---------------|

Private Day Nurseries

| | |
|---------------------------------------|---------------|
| Great Western Pre-school (Portlethen) | 01224 780 765 |
|---------------------------------------|---------------|



HELLO!



Stonehaven CSN

Aberdeenshire Council Nursery Schools

| Setting Name | Telephone Number |
|--------------------------------------|------------------|
| Arduathie School Nursery | 01569 762 996 |
| Bervie School Nursery | 01561 361 312 |
| Dunnottar School Nursery | 01569 762 414 |
| Lairhillock School (also Portlethen) | 01569 732 520 |
| Mill O'Forest School Nursery | 01569 763 561 |

Playgroups

| | |
|----------------------------------|---------------|
| Inverbervie Pre-school Playgroup | 01561 362 039 |
|----------------------------------|---------------|

Private Day Nurseries

| | |
|---------------------|---------------|
| Simpsons Playhouse | 01569 766 655 |
| Springboard Nursery | 01561 362 245 |
| The Croft Nursery | 01569 765 122 |



Turriff CSN

Aberdeenshire Council Nursery Schools

| Setting Name | Telephone Number |
|----------------------------|------------------|
| Fyvie School Nursery | 01651 891 247 |
| Markethill School Nursery | 01888 562 828 |
| Monquhitter School Nursery | 01888 544 238 |

Private Day Nurseries

| | |
|--|---------------|
| Auchterless Playgroup | 01888 511 479 |
| Busy Bees Playgroup | 01888 563 844 |
| Crudie Preschool Playgroup | 01888 551 326 |
| Fyvie Pre-school Playgroup | 07960 608 280 |
| Monquhitter Playgroup, Cuminestown | 07792 453 861 |
| Turriff CEC Playgroup, Gateway Setting | 01888 568 539 |



Westhill CSN

Aberdeenshire Council Nursery Schools

| Setting Name | Telephone Number |
|-------------------------|------------------|
| Crombie School Nursery | 01224 740 900 |
| Elrick School Nursery | 01224 741 900 |
| Westhill School Nursery | 01224 740 225 |

Playgroups

| | |
|----------------------------|---------------|
| Denman Playgroup | 01224 743 098 |
| Kirkton of Skene Playgroup | 07789 871 601 |
| Scout Hall Playgroup | 01224 742 455 |

Private Day Nurseries

| | |
|-------------|---------------|
| The Bridges | 01224 744 741 |
|-------------|---------------|



Local Area Education Offices:

Alford, Aboyne, Banchory, Huntly, Laurencekirk, Portlethen, Stonehaven

Stonehaven Area EL&L Office, Queens Road, Stonehaven, AB39 2QQ

☎ 01569 766 960 ☎ 01569 768 489 ✉ preschool.south@aberdeenshire.gov.uk

Banff and Mintlaw

Banff & Buchan EL&L Office, St Leonards, Sandyhill Road, Banff, AB45 1TA

☎ 01261 813 340 ☎ 01261 813 396 ✉ preschool.north@aberdeenshire.gov.uk

Ellon, Inverurie, Kemnay, Meldrum, Turriff, Westhill

Garioch EL&L Office, Gordon House, Blackhall Road, Inverurie, AB51 3WA

☎ 01467 620 981 ☎ 01467 622 254 ✉ preschool.central@aberdeenshire.gov.uk

Fraserburgh

EL&L Office, Dover Lodge, 117 Charlotte Street, Fraserburgh, AB43 9LS

☎ 01346 515 303 ☎ 01346 512 377 ✉ preschool.north@aberdeenshire.gov.uk

Peterhead

Buchan EL&L Office, Old Infant Building, Prince Street, Peterhead, AB42 1PL

☎ 01779 473 269 ☎ 01779 470 390 ✉ preschool.north@aberdeenshire.gov.uk

If you need an interpreter or the information in The Applying for Pre-school Education for your Child booklet translated please contact 01224 664 026

Jeśli potrzebujesz pomocy tłumacza lub przetłumaczonej na język polski broszury się o Miejsce w Przedszkolu dla Twojego Dziecka, proszę zadzwonić pod numer 01224 664026

Если Вы нуждаетесь в переводчике или в переводе информации, содержащейся в брошюре «Подача заявления на дошкольное образование Вашего ребенка», просим Вас позвонить по телефону 01224 664026

Ja Jums ir nepieciešams tulks, vai informācijas bukleta "Jūsu bērna pieteikšana uz Pirmsskolas Izglītību" tulkojums, lūdzam zvanīt uz 01224 664026

Jeigu jums reikalinga vertėja ar išversta informacinė brošiūra Kreipimasis dėl Iki-mokyklinio išsilavinimo Jūsų Vaikui, prašome skambinti telefonu 01224 664026



Aberdeenshire
COUNCIL



The information on pre-school settings in partnership with Aberdeenshire Council is correct at the time of going to print.

Please note: Transport to and from Pre-school Education Setting is NOT provided or funded by the Education Service.