

9 May 2008

Colin Bell
Directorate for Planning and Environmental Appeals
4 The Courtyard
Callendar Business Park
Falkirk
FK1 1XR

Dear Colin

Re: Outline Planning Permission Inquiry for Golf Course & Resort, Menie House, Balmedie, Aberdeen

Sandtoft Roof Tiles Ltd – Written Submission

On behalf of Sandtoft Roof Tiles I wish to express our thanks for the invitation to submit a written paper to this inquiry.

The Design

Though this inquiry has not been established to discuss the merits of design, we feel that the developers have shown great ambition in the aesthetics and choices of finishes for the proposed buildings. Consequently we support the proposed development, and its intended design.

Clay tiles have a proud and long established place in Scottish vernacular; indeed some of the finest buildings are adorned in clay roof tiles. This is especially the case along the Eastern Coast, where Flemish traders often exchanged clay pantiles (used as ballast in their ships) for local goods such as wool. As these clay tiles were readily available and in abundant supply, they found their way onto local roofs, and became an important element in the local vernacular.

Natural clay roof tiles and fittings never lose their colour, instead they simply mature with age. Clay roofs bring heritage and beauty to well designed buildings and sit especially comfortable in natural surroundings as can be seen on this golf development in Dirleton, North Berwick.



The Renaissance Club at Archerfield, North Berwick

West Lodge - The new and dramatic Golf Clubhouse and Lodge development, which is currently ongoing. The use of natural red clay plain tiles, has helped the natural

environment embrace this development, perched as it is by the Firth of Forth, with breathtaking views across to the Kingdom of Fife and backed by the Ochil Hills.

Contribution & environmental sensitivity

Clay tiles are widely recognised for their durability and sustainability and long has this been the case. Architects, Planners and our forefathers have not only provided a highly functional roof covering, but have, in developing the use of clay, left a legacy for future generations. Clay is often taken for granted as it is widespread in our architecture but previous architects understood its beauty and its contribution to our sense of place.

All building or development work has some impact upon the local environment, but this can be reduced to a great extent, by the careful selection and use of sustainable products and materials during construction.

In the distant past the manufacturing process of clay roof tiles could not be described as environmentally aware. Not so now. Clay manufacturers have taken a number of measures to reduce the environmental impact of their operations. The industry believes it has a responsibility to protect the environment for future generations.

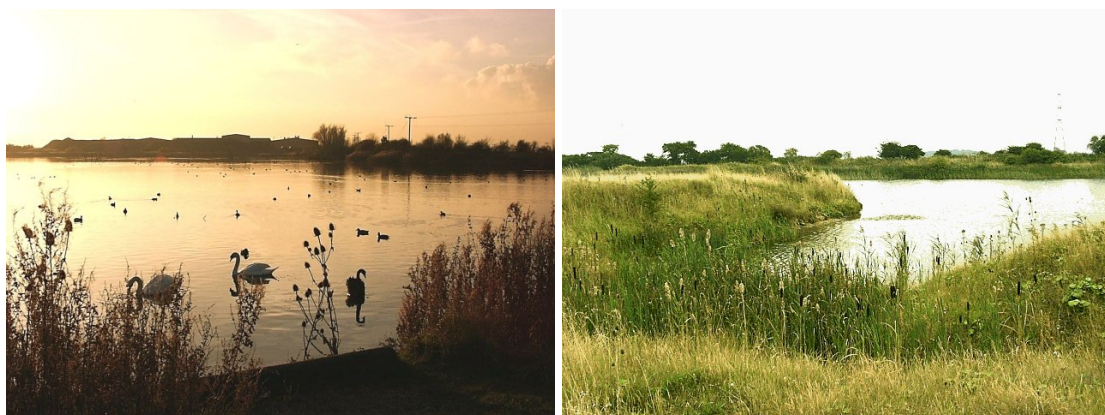
The main focus of Sandtoft's environmental activities is the reduction of carbon dioxide emissions to help mitigate climate change and here are some of the key areas in which the company is making a difference.

Sandtoft recently switched to a 100% green source of electricity for its entire operations. All production facilities now use electricity generated from green sources such as wind farms and hydro-electric plants.

We have committed to a transport policy that aims to reduce CO₂. By installing fuel pumps and tanks at our headquarters we can now run our cars on low carbon 100% RME bio-diesel and have incentivised our hauliers to do the same.

The company's commitment to greener methods of production and operation, has seen the use of natural clay material positively contributing to the local ecology and environment.

Exhausted clay pits, dug within a mile of the factory, have been filled with water and stocked with fish. They have been restored to thriving havens of natural beauty and local wildlife, with two sites designated by English Nature as Sites of Special Scientific Interest (SSSI). Restrictions are placed on these areas to ensure their long term success.



Exhausted Clay Pits at Broomfleet Factories

Clay tiles are inert and completely recyclable. During manufacture any waste clay is returned back into the production process. Fired clay waste is used in place of primary hardcore on local roads. None is transported away for landfill.

Background Information

Nigel Dyer is a Member of the Society for the Protection of Ancient Buildings (SPAB), with over 15 years experience working on some of the UK's most important buildings. He has acted as an advisor to English Heritage, Historic Scotland and the National Trust; helping to conserve and restore some of our most important architectural assets. He is also a Member of the Institute of Roofing, and has given independent advice to numerous companies, institutions, councils, etc on the appropriate design and use of historic roofing products.

Sandtoft Roof Tiles has been the UK's largest Independent Roof Tile Manufacturer for over 100 years.

Our commitment to the environment, CO₂ reduction and renewable technology is unsurpassed. We are driven by the belief that we have a responsibility to act decisively to reduce climate change and our waste production figures are amongst the best in the industry.

Great emphasis is placed on the retention of traditional skills and manufacturing methods allowing us to produce tiles and fittings, not just to our own exacting standards, but to those of conservation bodies and local planners.

Yours sincerely

Nigel Dyer MloR
Heritage Service Manager