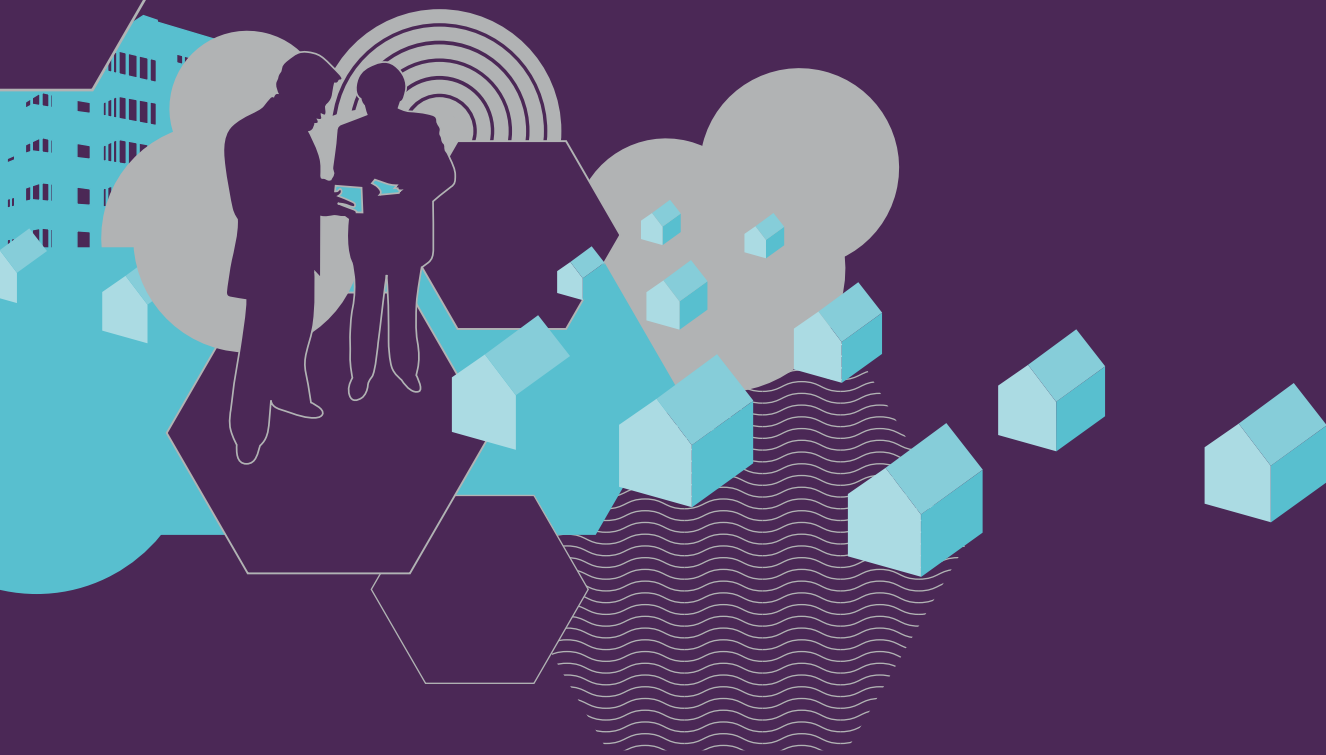


1A

ABERDEENSHIRE  
COUNCIL  
DEVELOPMENT  
PLAN SCHEME  
MARCH 2009







# ABERDEENSHIRE LOCAL DEVELOPMENT PLAN 2009 DEVELOPMENT PLAN SCHEME

---

## 1. What is a Development Plan Scheme?

A development plan scheme is a document which Aberdeenshire Council must produce by law to set out our programme for preparing (and reviewing) the “local development plan”. We will update this scheme every year to tell everyone:

- How preparation of the plan is going
- What parts of the plan are likely to be completed in the next year
- How and when businesses, landowners and communities can become involved in preparation of the plan.

## 2. What is a local development plan, and why prepare it now?

The current development plan for Aberdeenshire is the Aberdeen and Aberdeenshire Structure Plan “North East Scotland Together” (2001) and the Aberdeenshire Local Plan (2006). A replacement Structure plan (the “Aberdeen City and Shire Structure Plan”) is currently in preparation and is likely to be approved by Government in late 2009. The current statutory Planning framework is described below:

Statutory Plans	
Aberdeen and Aberdeenshire Structure Plan “North East Scotland Together”	December 2001 - <i>Approved</i>
Finalised Aberdeen City and Shire Structure Plan	Anticipated by December 2009 - <i>Approved</i>
Aberdeenshire Local Plan	June 2006 - <i>Approved</i>

Supplementary Guidance	
Retail Impact Assessment Guidance	December 2004 - <i>Approved</i>
Allocated and Existing Employment Land	December 2004 - <i>Approved</i>
Development in the Countryside	December 2004 - <i>Approved</i>
Use of Wind Energy in Aberdeenshire – Guidance for Applicants Use of Wind Energy in Aberdeenshire – Guidance for Assessing Wind Energy Development	August 2005 - <i>Approved</i>
Applications for housing development on Phase II sites identified in the Aberdeenshire Local Plan	December 2005 - <i>Approved</i>
Use of Biomass Energy in Aberdeenshire – Information Requirements and Policy Interpretation	January 2006 - <i>Approved</i>
Use of Micro-Renewable Energy in Aberdeenshire: A Guide for Applicants	January 2006 - <i>Approved</i>
Carbon Neutrality in New Developments	January 2009 - <i>Approved</i>

In 2006 the Scottish Government passed an Act that signalled a marked change in the way land use planning was to be done. The “Planning etc. (Scotland) Act 2006” did away with “Local Plans” and now requires Local Planning Authorities such as Aberdeenshire Council to prepare Local Development Plans, and with our partners in Aberdeen City Council, Strategic Development Plans.

The change is more than just in the name because the Scottish Government expects Planning Authorities to prepare land use plans in a way which is quicker, more open, more efficient and more relevant than was previously the case. Local Development Plans are a way in which part of this change will be made.

The current local plan has land use “allocations”, to allow for the building of houses, businesses, shops and other forms of development, which are likely to provide enough land until 2011, or perhaps a little earlier. It also has “policies” or the rules used by decision makers to inform them whether a specific development proposal should be allowed. However nothing stands still, and since the Aberdeenshire Local Plan was first drafted many things have happened which may require us to look again at some of these allocations and policies. Starting now allows us to have the new plan in place before the old Aberdeenshire Local Plan becomes unfit for its purposes.

In-fact that is the reason for the new Local Development Plan, to look critically at what has changed since the Aberdeenshire Local Plan, and to provide an up to date planning framework which allows us to look forward confidently into the next decade, with enough development land for expected needs and up to date policies.

#### **The new local development plan gives us the opportunity to:**

- Update our planning policies to reflect the most up-to-date thinking
- Make changes to existing policies to make them work better
- Take on board the strategic direction provided by the emerging new structure plan and other guidance
- Discuss and Identify new sites for building on
- Review some policy areas and prepare new policies which may deliver some land use objectives better, or in a different way

#### **The local development plan is supported by two other elements;**

- An “Action Programme” is required to be prepared and regularly reviewed which will identify what is required to deliver development proposals included in the Local Development Plan. This programme will: list the actions required to deliver each of the plan’s policies and proposals; the name of who is to carry out each action; and the timescale for carrying out each action
- The need for additional policy guidance on specific topics will be identified in the plan to be prepared as “supplementary guidance”. Along with the Structure Plan this would form part of the Development Plan. Much of the detail previously found in Local Plans will be contained in supplementary guidance.

#### **Thus the purpose of the Local Development Plan is:**

- To provide a local interpretation of the spatial strategy contained within the emerging structure plan
- To provide its own interpretation of the settlement strategy which delivers the structure plan spatial strategy
- To provide a network of sites for development in line with this settlement strategy which have been the subject of meaningful engagement with local communities
- To provide policies which direct development that comes forward to meet the highest standards of sustainability, environmental protection, local distinctiveness, safety and design.
- To identify the scope and range of supplementary guidance that will be produced to meet these objectives

### 3. What will the new Local Development Plan look like?



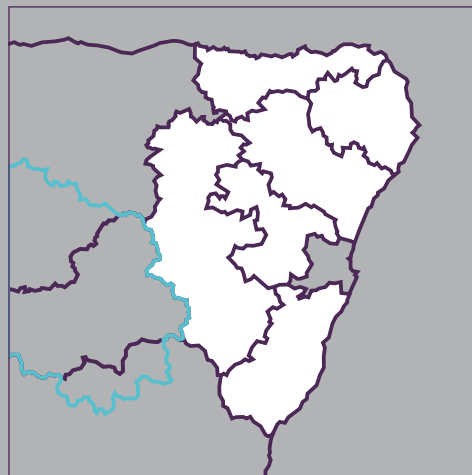
The Local Development Plan is likely to look very different from the current Aberdeenshire Local Plan. The plan will be concise and map based.

- It will contain details of the settlement strategy and the major allocations required to deliver this strategy.
- It will contain broad statements of policy intent.
- Minor proposals and detailed policies will be published as supplementary guidance, much of this at the same time as the plan itself.

At this time a development plan in eight parts is proposed:

1. The Local Development Plan: Settlement strategy, major proposals and broad statements of Policy.
2. Supplementary guidance on detailed policy prescriptions
3. Supplementary guidance on land use allocations in Banff and Buchan
4. Supplementary guidance on land use allocations in Buchan
5. Supplementary guidance on land use allocations in Formartine
6. Supplementary guidance on land use allocations in Garioch
7. Supplementary guidance on land use allocations in Kincardine and Mearns
8. Supplementary guidance on land Use allocations in Marr

The Local Development Plan will cover all of Aberdeenshire **except for that area which is within the Cairngorms National Park**. This area has its own local development plan. This area is shown on the adjacent diagram.





4. How will we prepare the new local development plan?



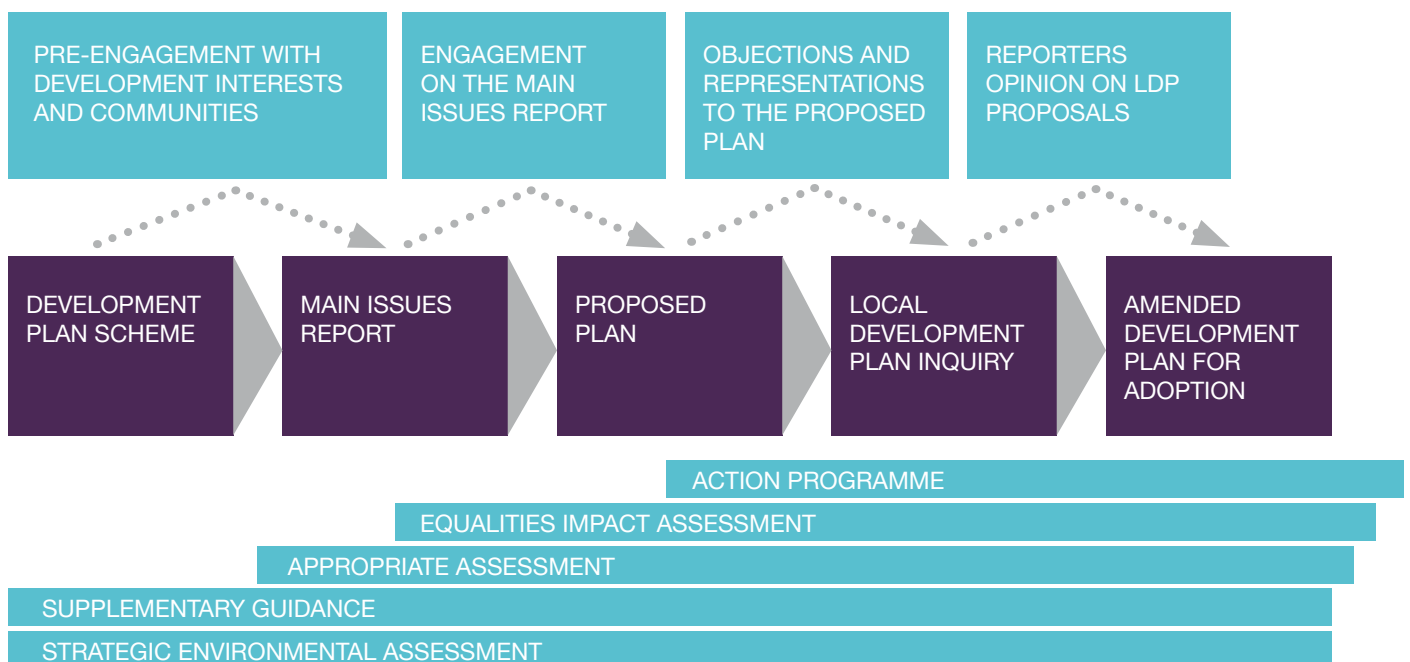
We are proposing an inclusive and open process for producing the Local Development Plan based on the presentation of major options within a document called the “Main Issues Report” before taking the comments given to us on these options and developing from these a “Proposed Plan”.

**We foresee the following stages in the production of the plan:**

- We have published the Development Plan Scheme (DPS) advising of the process being followed and opportunities to be involved.
- We will publish the “Main Issues Report” and a Monitoring Statement after which there will be a period of consultation and reflection
- At the same time as the Main Issues Report we will also publish a draft Strategic Environmental Assessment, Equalities Impact Assessment and an “Appropriate Assessment” of potential harm to European Nature Conservation Sites.
- We will publish the “Proposed Plan” on which formal objections or statements of support will be invited
- We will publish and consult on draft supplementary guidance detailing much of the specific proposals and policies required to support the Local Development Plan.
- We will also review the Strategic Environmental Assessment, the Appropriate Assessment and undertake an Equalities Impact Assessment to support the Proposed Plan
- We will prepare an Action Programme to support the Proposed Plan

- We will defend the Proposed Plan at an Examination (a process where an independent planner, a “Reporter” appointed by the Scottish Government considers objections to the plan)
- We will amend the proposed plan to take account of the Reporter’s findings and adopt it
- We will publish supplementary guidance to support key elements of the Local Development Plan
- We will amend the Strategic Environmental Assessment and Appropriate Assessment to take into account the Reporters findings
- We will publish the Local Development Action Plan to accompany the Adopted Plan.

Many of these stages include technical aspects (such as the Strategic Environmental Assessment, or the development of the Action Programme) but we will make sure that opportunity is made available for those who wish to get involved to do so. This will be done through specific invitation to groups who are likely to have an interest, as well as notices in the local press.



Details of the proposed timing of these stages is provided below, and how people can get involved is provided in **section 4. How can you get involved; the Participation Statement.**  
 The following our timetable for the Aberdeenshire Local Development Plan

Stage	Local Development Plan	SEA and other assessments	Timescale
1	Publish and advertise the development Plan Scheme. Encourage local debate about what development sites should be taken forward in the proposed plan	Prepare the Scoping report (Which identifies the kind of issues the SEA will look at) and send it to the consultation authorities. This includes the identification of “SEA objectives”	February 2009 to May 2009
2	Prepare and publish the Main issues Report for formal public consultation. Prepare and publish a monitoring report on changes in the principal physical, economic, social and environmental characteristics of the area that have occurred since the preparation of the existing local plan, and the impact of the Aberdeenshire Local Plan policies on these elements	Use the SEA objectives to inform policy and site choices presented in the Main Issues Report. Undertake initial Appropriate Assessment of sites. Undertake initial Equalities Impact Assessment of policy choices.	May 2008-May 2009
3	Prepare, publish and consult on the Proposed Plan and draft action programme. Assess objections subsequently received to inform Aberdeenshire Council’s position at a Local Development Plan Inquiry and comments and allow commentators to withdraw and	Undertake the Strategic environmental assessment of the proposed plan. Publish and consult on the environmental report and send it to the consultation authorities. Complete Appropriate Assessment.	May 2009-April 2010
4	Submission of Proposed Plan to Ministers and appoint a reporter to conduct an Examination of the Proposed Plan		May 2010
5	Change the proposed plan in the light of the LPI reporters recommendations and adopt the plan, and action programme	Modify and adopt the Environmental Report. Modify and adopt Equalities Impact Assessment.	March 2011
6	Monitor progress of the plan against targets set in the Action Programme		Annually January 2012 to December 2015
7	Publish supplementary guidance to give greater detail to the Proposed Plan, or to accommodate new issues		As required January 2011 to December 2015



## 5. How can you get involved: The Participation Statement

## Principles

The Government has published guidance on “Planning with people”. It has said that the inclusion of people and communities in the planning process is one of the driving forces behind planning reform.

### In order to achieve this:

- Community Engagement must be meaningful.
- Community Engagement must be at an early stage to influence the shape of plans and proposals.
- It is essential for people or interest groups to get involved in the preparation of development plans as this is where decisions, at the larger scale, on the strategy for growth, or protection are made.

# ABERDEENSHIRE COUNCIL HAS ADOPTED THE “STANDARDS FOR COMMUNITY ENGAGEMENT” IN THE DEVELOPMENT OF ITS STRATEGY FOR GETTING PEOPLE INVOLVED IN THE DRAWING UP OF THE LOCAL DEVELOPMENT PLAN.

The Government provides a checklist to help assess how successful community engagement has been:

- Has the community been made aware of the programme for participation in development plans?

We will publish and promote this development plan scheme as the principal vehicle for spreading information about how to get involved. We will ensure that Community Councils, development interests, and other stakeholders are aware of the timetable to which we are working.

- Have those most likely to be affected by the development plan been given opportunities to make their views known?
- Was the engagement in a manner, location and at a time that allowed a wide range of people to make their views known?

We will allow as long a time as possible for people to discuss development proposals in their area and make sure that, through the maintenance of an up-to-date website, information is available in a timely manner. We will embrace early engagement with key stakeholders to identify the “main policy issues”

- Has the planning authority or project team analysed the results of the engagement and provided feedback to the community?
- Has the planning authority or project team responded by amending the plan or proposal where possible?

We will make sure that every comment that we receive is individually considered and a response provided. We will adopt a transparent method for allowing people to see what we think should be done in relation to the comment that they have made. How each comment has been taken account of in the proposed plan will be made clear.

- Where changes have been made, have details of the revised plan or development scheme been publicised with an explanation of how people’s views have influenced it?

We do not anticipate publishing a second draft Proposed Plan but will publish information before the start of the Local Development Plan Inquiry on changes that people have proposed that we would be happy to support.

## ENGAGEMENT ON THE DEVELOPMENT PLAN SCHEME

---

- The Development Plan scheme will be published and press attention drawn to it. A copy will be sent to all of the groups listed in **section 5: Who will we consult?**
- The Development Plan Scheme will be published on the [www.aberdeenshire.gov.uk](http://www.aberdeenshire.gov.uk) web site.

## ENGAGEMENT ON THE MAIN ISSUES REPORT

---

We believe that the Main Issues Report is the most important element of the Local Development Plan Scheme and that it is of the greatest importance that we have as much participation in identifying what it will say, as engagement on the issues that it identifies.

- We have had seminars with Area Committee members, invited stakeholders from environmental, transport, development and rural interests to identify what areas of policy are most likely needing to be changed
- We have undertaken questionnaire surveys of Community Councils and the General Public (through Aberdeenshire Council's "Citizens Panel" to identify whether people feel we should change our policy approach
- We have met internally with service providing groups, such as Development Management teams and our Transportation and Housing functions to discuss the adequacy of our current policy approach.
- We have met with the key infrastructure agencies (Transport Scotland, Scottish Water,

NHS Grampian) to ensure that their views are taken on board in the development of the settlement strategy.

- We have invited landowners and developers to identify to us, and through us the general public, what the scope and nature of the land they would like to see allocated is. We have encouraged the development industry to engage with communities so that, on publication of the Main Issues Report, there is a full understanding of expectations and aspirations.
- We have invited other public services, and services within Aberdeenshire Council to identify what land may be required for operational reasons.

We will produce a Main Issues Report which will identify options for the development of land, including Aberdeenshire Council's preferred options, and identifies choices that are available in the development of new policies where our research has indicated that significant change in direction may be required.

### In April 2009

- Before publication of the Main Issues Report we will host a series of at least 6 Community Council Forum meetings to ensure that Community Councils have a clear picture of the nature and purpose of the proposed consultation
- Prior to its publication, the Main Issues Report must have regard to views expressed by the following key agencies:
  - Scottish Natural Heritage
  - Scottish Environmental Protection Agency
  - Scottish Water
  - Scottish Enterprise
  - NESTRANS
  - Grampian Health Board

We will continue the process of engagement with these agencies undertaken in the preparation of the Main Issues Report by providing them with a draft copy of the Main Issues Report for comment before it is published by Aberdeenshire Council.

### In May 2009

- We will publish the Main Issues Report on our website, and mail multiple copies directly to all those identified in **section 5: Who will we consult?** We will invite and encourage comments on the Main Issues Report for a period of 6 weeks.
- We will produce, and circulate, a plain English Information leaflet outlining the Local Development Plan Process, the role of the Main Issues Report, a summary of the issues it raises and a response pro-forma to libraries and Area Offices. We will also mail it directly to those identified in **section 5: Who will we consult?** and to development interests who are known to us.
- We shall publish statutory notices in all local papers in the area to draw attention to the publication of the main Issues Report, and will engage with the press over its release.
- The website will be developed to promote the Main Issues Report and encourage on-line submission of representations. A companion technical report will also be published on the website.

### Throughout June 2009

- A travelling public exhibition will tour each of 20 venues across the Local Plan area, and invite participation in the evening at a presentation and workshop to assist with the completion of response forms.

### By January 2010

- All representations received will have been catalogued and reviewed. A report will be produced to identify all comments made. A personal response will be made to all those engaging with us on the Main Issues Report.

## ENGAGEMENT ON THE PROPOSED PLAN

---

The proposed plan is the plan that Aberdeenshire Council would like to see taken forward to adoption, and will be the plan debated in the Local Plan Inquiry.

### In February 2010:

- We will publish statutory notices in the Press and Journal newspaper, and other notices in local papers, allowing at least 6 weeks for people to give us their views
- We will place a copy of the proposed plan on our website and distribute copies to the Area Offices and all Libraries within Aberdeenshire. A response pro-forma will also be placed on the website
- We will write to all community councils with a copy of the statutory notice, a copy of the proposed plan and a pro-forma to encourage and help them make representations.
- We will write to all those who engaged with us on the Main Issues Report with a copy of the statutory notice, a copy of the proposed plan and a pro-forma to help them make representations, and a copy of a report on how we took account of representations made on the Main Issues Report
- We will write to all landowners that we can identify, advising them of our inclusion of their land within the proposed plan. We will also write to occupiers and neighbours to advise them of the proposal of land for development in the Plan.
- We will write to all statutory undertakers and adjoining Local Authorities with a copy of the statutory notice, a copy of the proposed plan and a pro-forma to help them make representations

## Throughout May 2010 to September 2010

- We will meet with those making representations.

## In September 2010

- We will acknowledge all responses made to the Proposed Plan and publish a report on whether any submissions made should result in a change to Aberdeenshire Councils adopted position going into an Examination. We do not propose to formally modify the Proposed Plan at this stage.
- Taking into account any changes deemed necessary following receipt of submissions we will defend the proposed plan at a Local Development Plan Inquiry, probably in October 2010

## ENGAGEMENT ON SUPPLEMENTARY GUIDANCE

---

### In February 2010

- We will publish a list of proposed supplementary guidance in the Press and Journal, and for site specific proposals in local papers.
- We will place the proposed supplementary guidance on our website and Local libraries.
- We will write to all community groups with copies of the proposed guidance.
- We will write to occupiers, neighbours and owners of land we propose to include within the supplementary guidance advising them of that fact.
- We will write to all statutory undertakers and other stakeholder groups with copies of the proposed guidance.

## In September 2010:

- We will acknowledge responses made to the supplementary guidance and report to Aberdeenshire Council whether responses received require modification to the supplementary guidance.
- We will make modifications to the supplementary guidance and submit it to Scottish Ministers as the supplementary guidance the Council would wish to adopt.

## FOLLOWING THE LOCAL DEVELOPMENT PLAN INQUIRY

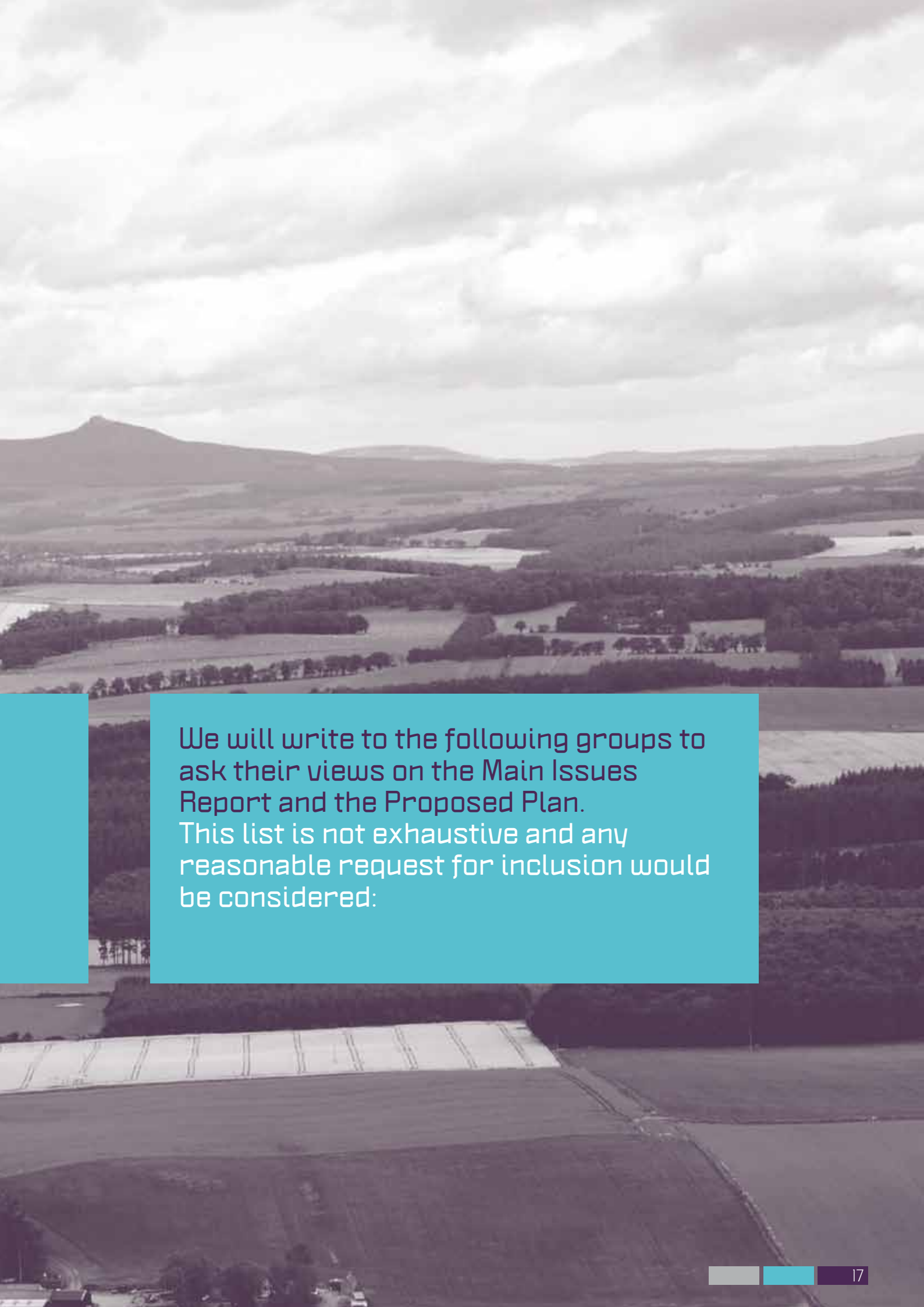
---

On receipt of the Local Development Plan Inquiry Reporter's recommendations:

- We will amend the plan as instructed
- We will advertise our intention to adopt the Local Development Plan in the Press and Journal
- We will print the Local Development Plan and lodge it in Libraries across Aberdeenshire.
- We will publish the Local Development Plan on our website.
- We will publish Supplementary Guidance on our website



## 6. Who will we consult?



We will write to the following groups to ask their views on the Main Issues Report and the Proposed Plan. This list is not exhaustive and any reasonable request for inclusion would be considered:

## COMMUNITY GROUPS

---

Aberchirder-Marnoch Community Council  
Aberdour-Tyrie Community Council  
Alvah-Forglen Community Council  
Arbuthnott Community Council  
Auchenblae Community Association  
Auchnagatt Community Association  
Achterless-Inverkeithny Community Council  
Ballater and Crathie Community Council  
Banchory Community Council  
Banff-Macduff Community Council  
Barthol Chapel Community Association  
Belhelvie Community Council  
Benholm and Johnshaven Community Council  
Bennachie Community Council  
Birse and Ballogie Community Council  
Boddam and District Community Council  
Braemar Community Council  
Buchan East Community Council  
Buchan Development Partnership  
Catterline, Kinneff and Dunnottar Rural Community Council  
Cluny Midmar and Monymusk Community Council  
Cornhill-Ordiquhill Community Council  
Crathes, Drumoak and Durris Community Council  
Cromar Community Council  
Cruden Community Council  
Deer Community Council  
Disability Advisory Group  
Donside Community Council  
East Garioch Community Council  
Echt and Skene Community Council  
Ellon Community Council  
Fintray and Kinellar Community Council  
Finzean Community Council  
Fordyce-Sandend District Community Council  
Formartine Community Council Forum  
Formartine Partnership  
Foveran Community Council  
Fraserburgh Community Council  
Feughdee West Community Council  
Fyvie-Rothie-Monquhitter Community Council  
Garioch Community Council Forum  
Gourdon Community Council  
Grampian Community Care Charitable Trust  
Gypsy Traveller Education and Information Project  
Huntly Community Council  
Invercairn Community Council  
Inverurie Community Council  
Kemnay Community Council  
Kincardine and Mearns Community Council Forum  
King Edward-Gamrie Community Council  
Kintore Community Council  
Longside and District Community Council  
Lumphanan Community Council  
Marr Area Partnership  
Mearns Community Council  
Meldrum and Bourtie Community Council  
Methlick Community Council  
Mid Deeside Community Council  
Mintlaw and District Community Council  
New Pitsligo Community Council  
Newmachar Community Council  
Newtonhill, Muchalls and Cammachmore Community Council  
Nigg Community Council  
North Kincardine Rural Community Council  
Peterhead Community Council  
Portlethen and District Community Council  
Portsoy and District Community Council  
Rathen and District Community Council  
Rosehearty Community Council  
Rothienorman Community Association  
Royal Burgh Inverbervie Community Council  
Sandhaven-Pitullie Community Council  
Slains and Collieston Community Council  
St Cyrus Community Council  
Stonehaven and District Community Council  
Strathbogie Community Council  
Strichen and District Community Council  
Tap o'North Community Council  
Tarves Community Council  
Torphins Community Council  
Turriff and District Community Council  
Udny Community Council  
Westhill and Elrick Community Council  
Whitehills and District Community Council  
Women's Alliance  
Scottish Youth Parliament  
Ythan Community Council

## OTHER STAKEHOLDER GROUPS

---

Aberchirder Primary School Parent Council  
Aberdeen and Grampian Chamber of Commerce  
Aberdeen City and Shire Economic Futures (ACSEF)  
Aberdeen City and Shire Strategic Development Planning Authority  
Aberdeen City Council  
Aberdeen Design Forum  
Aberdeen Renewable Energy Group  
Aberdeen Solicitors Property Centre  
Aberdeenshire Environmental Forum  
Aberdeenshire Local Housing Strategy Group  
Aboyne Academy Parent Council  
Aboyne Primary School Parent Council  
Alehousewells Primary School Parent Council  
Alford Academy Parent Council  
Alford Primary School Parent Council  
Angus Council  
Ardallie Primary School Parent Council  
Arduthie Primary School Parent Council  
Arnage Primary School Parent Council  
Association of Builders and Developers  
Auchenblae Primary School Parent Council  
Auchnagatt Primary School Parent Council  
Auchterellon Primary School Parent Council  
Auchterless Primary School Parent Council  
Ballater Primary School Parent Council  
Balmedie Primary School Parent Council  
Banchord Academy Parent Council  
Banchory Devenick Primary School Parent Council  
Banchory Primary School Parent Council  
Banff Academy Parent Council  
Banff Primary School Parent Council  
Barthol Chapel Primary School Parent Council  
Bervie Primary School Parent Council  
Boddam Primary School Parent Council  
Bracoden Primary School Parent Council  
Braemar Primary School Parent Council  
British Airports Authority, Aberdeen  
British Telecom  
Buchanhaven Primary School Parent Council  
Burnhaven Primary School Parent Council  
Cairney Primary School Parent Council  
Carronhill Primary School Parent Council  
Catterline Primary School Parent Council  
Centrica  
Chapel of Garioch Primary School Parent Council  
Civil Aviation Authority  
Clatt Primary School Parent Council  
Clerkhill Primary School Parent Council  
Cluny Primary School Parent Council  
Craigievar Primary School Parent Council  
Crathes Primary School Parent Council  
Crathie Primary School Parent Council  
Crimond Primary School Parent Council  
Crombie Primary School Parent Council  
Crudie Primary School Parent Council  
Cultercullen Primary School Parent Council  
Dales Park Primary School Parent Council  
Daviot Primary School Parent Council  
Deeside Estates Management  
Drumblade Primary School Parent Council  
Drumoak Primary School Parent Council  
Dunnecht Primary School Parent Council  
Dunnottar Primary School Parent Council  
Durris Primary School Parent Council  
Easterfield Primary School Parent Council  
Echt Primary School Parent Council  
Ellon Academy Parent Council  
Ellon Primary School Parent Council  
Elrick Primary School Parent Council  
Federation of Small Businesses  
Fetterangus Primary School Parent Council  
Fettercairn Primary School Parent Council  
Fintry Primary School Parent Council  
Finzean Primary School Parent Council  
Fisherford Primary School Parent Council  
Fishermoss Primary School Parent Council  
Fordyce Primary School Parent Council  
Forgue Primary School Parent Council  
Foveran Primary School Parent Council  
Fraserburgh Academy Parent Council  
Fraserburgh Harbour Board  
Fraserburgh North Primary School Parent Council  
Fraserburgh South Park Primary School Parent Council  
Freight Transport Association  
Friends of the Earth  
Fyvie Primary School Parent Council  
Gartly Primary School Parent Council  
Glass School Parent Council  
Glenbervie Primary School Parent Council  
Gordon Primary School Parent Council  
Gourdon Primary School Parent Council  
Grampian Forum of Voluntary Organisations

---

Grampian House Builders Committee of Homes for Scotland  
Grampian Primary Care NHS Trust  
Hatton (Cruden) Parent Council  
Hatton Fintray Primary School Parent Council  
Hill of Banchory Primary School Parent Council  
Historic Scotland  
Insch Primary School Parent Council  
Institution of Civil Engineers Agriculture Advisory Group  
Inverallochy Primary School Parent Council  
Inverurie Academy Parent Council  
Inverurie Business Association  
Inverurie Markey Place Primary School Parent Council  
Johnshaven Primary School Parent Council  
Keig Primary School Parent Council  
Keithhall Primary School Parent Council  
Kellands Primary School Parent Council  
Kemnay Academy Parent Council  
Kemnay Primary School Parent Council  
Kennethmont Primary School Parent Council  
Kincardine O Neil Primary School Parent Council  
Kinellar Primary School Parent Council  
King Edward Primary School Parent Council  
Kininmonth Primary School Parent Council  
Kinneff Primary School Parent Council  
Kintore Primary School Parent Council  
Lairhillock School Parent Council  
Largue Primary School Parent Council  
Laurencekirk Primary School Parent Council  
Lochpots Primary School Parent Council  
Logie Coldstone Parent Council  
Logie Durno Primary School Parent Council  
Longhaven Primary School Parent Council  
Longside Primary School Parent Council  
Lumphanan Primary School Parent Council  
LumsdenPS Parent Council  
Luthermuir Primary School Parent Council  
Macduff Primary School Parent Council  
Mackie Academy Parent Council  
Markethill Primary School Parent Council  
Marykirk Primary School Parent Council  
Maud Primary School Parent Council  
Mearns Academy Parent Council  
Meethill Primary School Parent Council  
Meiklemill Primary School Parent Council  
Meldrum Academy Parent Council  
Meldrum Primary School Parent Council  
Methlick Primary School Parent Council  
Midmar Primary School Parent Council  
Mill O Forest Primary School Parent Council  
Mintlaw Academy Parent Council  
Mintlaw Primary School Parent Council  
Monquhitter Primary School Parent Council  
Monymusk Primary School Parent Council  
National Farmers Union  
National Grid plc  
National Trust for Scotland  
Network Rail  
New Aberdour Primary School Parent Council  
New Deer Primary School Parent Council  
New Pitsligo & St John's Primary School Parent Council  
Newburgh Mathers Primary School Parent Council  
Newmachar Primary School Parent Council  
Newtonhill Primary School Parent Council  
North East Banffshire Tourism Trust  
North East Fisheries Development Board  
North East Forest Industries Group  
North East of Scotland Transport Authority (NESTRANS)  
North East Scotland Joint Public Sector Group  
North East Scotland Waste Strategy Group  
Old Rayne Primary School Parent Council  
Ordiquhill Primary School Parent Council  
Oyne Primary School Parent Council  
Peterhead Academy Parent Council  
Peterhead Business Association  
Peterhead Central Primary School Parent Council  
Peterhead Port Authority  
Pitfour Primary School Parent Council  
Pitmedden School Parent Council  
Port Elphinstone Primary School Parent Council  
Port Erroll Primary School Parent Council  
Portlethen Academy Parent Council  
Portlethen Primary School Parent Council  
Portsoy Primary School Parent Council  
Premnay Primary School Parent Council  
Rathen Primary School Parent Council  
Rayne North Primary School Parent Council  
Redmyre School Parent Council  
Rhynie Primary School Parent Council  
River Dee Salmon Board  
Rosehearty Primary School Parent Council  
Rothienorman Primary School Parent Council  
Royal Institute of Chartered Surveyors, North East Branch

---

Royal society for the Protection of Birds  
Royal Town Planning Institute, Grampian Chapter  
Sandhaven Primary School Parent Council  
Scottish and Southern Hydro Electric  
Scottish Enterprise  
Scottish Environmental Protection Agency  
Scottish Gas  
Scottish Natural Heritage  
Scottish Rural Property and Business Association  
Scottish Water  
Scottish Wildlife Trust  
Skene Primary School Parent Council  
Slains Primary School Parent Council  
Sports Scotland  
St Andrews Primary School Parent Council  
St Andrews Primary School Parent Council  
St Combs Primary School Parent Council  
St Cyrus Primary School Parent Council  
St Fergus Primary School Parent Council  
Stonehaven Business Association  
Stonehaven Towns Partnership  
Strachan Primary School Parent Council  
Strathburn Primary School Parent Council  
Strathdon Primary School Parent Council  
Strichen School Primary School Parent Council  
Stuartfield Primary School Parent Council  
Tarland Primary School Parent Council  
Tarves Primary School Parent Council  
The Anna Ritchie School Parent Council  
The Cairngorms National Park Authority  
The Gordon Schools Parent Council  
The Moray Council  
Tipperty Primary School Parent Council  
Torphins Parent Council  
Tough Primary School Parent Council  
Towie Primary School Parent Council  
Towns Together Forum  
Transport Scotland  
Tullynessle Primary School Parent Council  
Turrieff Academy Parent Council  
Tyrie Primary School Parent Council  
Udny Green Primary School Parent Council  
UK Offshore Operators Association  
Westfield Parent Council  
Westhill Academy Parent Council  
Westhill Primary School Parent Council  
Whitehills Primary School Parent Council  
Youth Dialogue, Aberdeenshire Council

---

This document is the Development Plan Scheme. It identifies the timetable and our proposals for consultation on the Aberdeenshire Local Development Plan 2009

If you need help reading this document (for example if you need it in a different format or in another language), please phone us on 01224 665168

Если требуется помощь при выборе языка /переводчика или других способов общения, звоните по телефону :01224 665168

Lai saņemtu palīdzību sakarā ar valodu/tulkošanu un citiem iespējamiem komunikāciju atbalsta formātiem, lūdzu zvanīt 01224 665168

Jeżeli potrzebujesz pomocy językowej / tłumacza lub innej pomocy w porozumiewaniu się, proszę zadzwonić pod numer: 01224 665168

Jeśli potrzebujesz pomocy językowej / tłumacza lub innej pomocy w porozumiewaniu się, proszę zadzwonić pod numer: 01224 665168

---

Aberdeenshire Local Development Plan  
Woodhill House  
Westburn Road  
Aberdeen  
Ab16 5GB

Phone: 01224 664755  
Fax: 01224 664679  
Web: [www.aberdeenshire.gov.uk/ldp](http://www.aberdeenshire.gov.uk/ldp)  
E-mail: [ldp@aberdeenshire.gov.uk](mailto:ldp@aberdeenshire.gov.uk)

