

Please tick the boxes for the festivals wishing to be entered:

Tick <input type="checkbox"/>	Date	Venue
<input type="checkbox"/>	Wed 25 th April 2012	Kintore Primary
<input type="checkbox"/>	Thurs 10 th May 2012	Meldrum Academy
<input type="checkbox"/>	Tues 5 th June 2012	Westhill Academy

It is the responsibility of the accompanying adult/parent/teacher to ensure all participants have appropriate screening and permission forms when attending the festivals.

Coach signature:

.....

Date:

.....

Return this application form to:

Your Active Schools Coordinator

Abigail Hay	Alford Network
Mark Borzoni	Huntly Network
Erica Jones	Meldrum Network
Stuart Glennie	Westhill Network
Kerry Massie	Kemnay Network
Louise Watt	Inverurie Network

Email:

forename.surname@aberdeenshire.gov.uk

www.aberdeenshire.gov.uk/activeschools

Mini Basketball

Mini basketball is a modified version of basketball played between two teams of 4 players on a smaller (badminton sized) court, and with a variety of adapted rules, which are summarised below. Teams can consist of up to 8 players made up of boys and girls.

Modified Rules

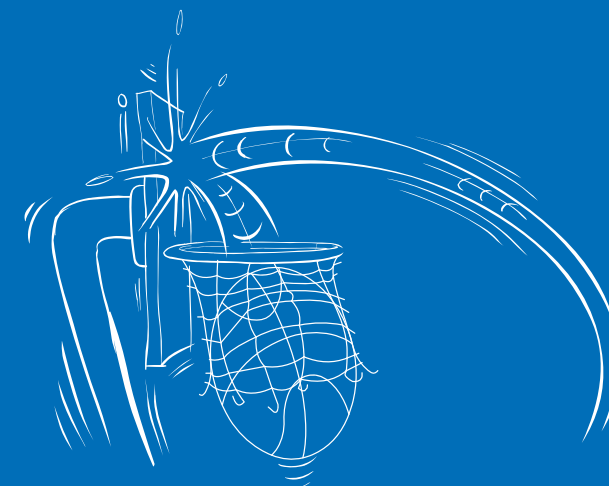
1. Size 5 ball.
2. No set Positions.
3. No Contact.
4. Travelling – no running with ball if not bouncing. Once they have dribbled players then have 2 steps to release the ball by a pass or shot.
5. Double Dribble – players must dribble ball with one hand at time. Once they have stopped and touched ball with both hands, they cannot then dribble again.
6. All players to be given equal amount of playing time.



Produced by Aberdeenshire Council GDT13864 August 2012



Active Schools Central Primary Mini Basketball Festivals 2012



Basketball
John, aged 8

Active Schools Central Team are to introduce a mini basketball programme of festivals in 2012. It provides an opportunity for boys and girls to participate in a series of games and festivals. It is our vision to increase involvement in the sport of Basketball and to provide children with the opportunity to play games and participate in festivals.

As far as possible we will try to provide referees for the festivals, however, depending on the number of teams we may need additional referees. We would therefore ask that you have at least one person at each festival that is willing to referee on a rotational basis.

Festivals

Date	Venue	Time
Wed 25 th April 2012	Kintore Primary	4-6pm
Thurs 10 th May 2012	Meldrum Academy	4-6pm
Tues 5 th June 2012	Westhill Academy	4-6pm

Closing Dates

Entries can be taken at any time throughout the year using the application form attached. However they MUST be received no later than a week before each event to allow organisation for each festival day.

Confirmation

A confirmation letter/email will be sent a week prior to the festival. If you do not receive this confirmation please contact your ASC to ensure you are included in the playlist for the festival. An order of play for each event will be handed out at each event.

What to Bring

Participants should arrive wearing training shoes, t-shirt and shorts and bring water to drink. A set of playing bibs should also be provided by each school.

Festival Ethos

As the ethos for participation festivals is fun there will be no winners and scores will not be recorded. The main emphasis will be on fair play and sportsmanship and children should be encouraged to adopt this approach at all festivals.

Application Form

School name:

.....

Contact person name and address:

.....

.....

.....

Contact person Mobile telephone number:

.....

Contact person email address:

.....

Tell us how many teams you wish to enter:

Category	Number of teams
P4-7	
P6/7	

* Please ensure that the contact information is for the actual contact person and not just the school (unless you are certain you can access any correspondence from this location).