

TIMETABLE

MONDAY

| | |
|---------------|------------------|
| 9.45-10.45 | Zumba Class |
| 14.00 – 15.00 | Lathallan School |
| 19.00-20.00 | Private Booking |
| 20.00-21.50 | Badminton Club |

TUESDAY

| | |
|-------------|-----------------|
| 10.00-11.00 | School Hire |
| 11.00-17.00 | Public Hire |
| 17.00-21.00 | Private Booking |
| 21.00-21.50 | Public Hire |

WEDNESDAY

| | |
|-------------|------------------------------------|
| 10.00-15.30 | Gym Ted |
| 15.30-19.00 | Gymnastic Club/Public Hire(2corts) |
| 19.00-20.00 | Karate/School Badminton |
| 20.00-21.00 | Karate/Public Hire (3 courts) |
| 21.00-21.50 | Private Booking |

THURSDAY

| | |
|-------------|-----------------|
| 10.00-12.00 | Public Hire |
| 12.00-15.00 | CLOSED |
| 15.00-16.00 | Public Hire |
| 16.00-17.00 | School Booking |
| 17.00-18.00 | School Booking |
| 18.00-19.00 | School Booking |
| 19.00-21.00 | Private Booking |
| 21.00-21.50 | Private Booking |

FRIDAY

| | |
|-------------|----------------|
| 10.00-11.30 | School Booking |
| 16.30-18.00 | Public Hire |
| 18.00-19.00 | Private Hire |
| 19.00-21.00 | Private Hire |
| 21.00-21.50 | Public Hire |

SATURDAY

| | |
|--------------|---------------|
| 10.00- 12.00 | Soccer Sevens |
| 12.00-16.00 | Public Hire |

SUNDAY

| | |
|-------------|------------------|
| 13.00-18.00 | Public Hire |
| 18.00-19.00 | Public Hire |
| 19.00-21.00 | Private Bookings |

Public Hire

To guarantee the times and activities you require, it is recommended that you book in advance although it is not essential.. Bookings cannot be taken any earlier than 6 days in advance.

GUIDE TO CENTRE ACTIVITES

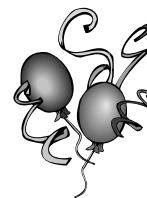
Badminton Club (Adults)

Improve your badminton skills by joining this group. All abilities welcome.

Gym Ted

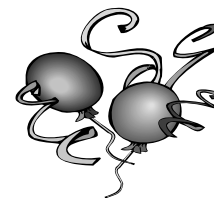
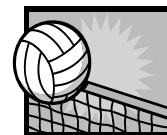
Pre school Gymnastics for children aged 1-5 years old. Please ask at reception for more

Birthday Parties



The sports centre is available for booking your child's birthday party. The most popular is the **bouncy castle**

With soft play. Or alternatively you could have any activity your child wishes such as **Football Parties**. The hall is available most weekends, some evenings and school holidays.



It is ideal for children as they have plenty space to run around and ideal for parents as we set out all the equipment for your arrival and clear it away when you are finished.

An area is set aside for food if you require to use it.



Multi-gym

FOR OVER 16's ONLY

Our fitness room is equipped with a range of cardio-vascular, fixed resistance weight and free weight equipment.

All users must undertake a **Fitness Aberdeenshire** induction. This will allow you to use not only our gym, but all gyms throughout Aberdeenshire. Inductions are practical, so bring your kit and be ready to get hands on!

Personal programmes can be made by request.



PRICE'S

| | Adult | Conc |
|-------------------|---------|---------|
| Single use | £4.30 | £2.15 |
| 12 session ticket | £43.00 | £21.50 |
| 6 month ticket | £130.00 | £65.00 |
| Annual ticket | £245.00 | £122.50 |

INDUCTION £11.30

Admission Charges

Hall

| | £ |
|-------------------------|-------|
| Whole Hall | 31.20 |
| Whole Hall (Concession) | 15.60 |
| ¼ hall | 7.80 |
| ¼ hall (Concession) | 3.90 |



Multi-gym

| | |
|---|-------|
| Hour | 4.30 |
| Concession | 2.15 |
| 12 session card | 43.00 |
| Concession | 21.50 |
| Induction | 11.30 |
| See Multi gym info for more price ideas | |

Activities

| | |
|------------------------|-----------|
| Badminton Adult | 3.60 |
| Improvers/Junior | 2.15 |
| Football | 2.15 |
| Bouncy Castle Activity | 2.15 |
| Gym Ted Activity | 2.15/2.85 |

Birthday Parties

| | |
|-------------------------------|-------|
| Whole Hall (per hour) ** | 31.20 |
| Staff Charge (per hour) | 15.00 |
| Bouncy Castle Hire (per hour) | 14.90 |

** ½ or ¼ hall available

Tennis court

| | |
|--------------------|------|
| Court (Adult) | 7.80 |
| Court (Concession) | 3.90 |

*Concessions apply to Children under 16, Senior Citizens over 60, Registered Disabled. Other concessions may apply please ask at reception.

Equipment hire available

Lockers

Lockers are provided. These require 10p, which is returnable.

Programme & Charges

9th Jan – 30th Mar 2012

Inverbervie Sports Centre

Kirkburn
Inverbervie
DD10 0RS
Tel. 01561 361182

www.aberdeenshire.gov.uk/recreation

Aberdeenshire
COUNCIL



Opening Times

| | |
|----------------|--|
| Mon-Wed | 10.00-22.00 |
| Thurs | 10.00-12.00 15.00-22.00 |
| Fri | 10.00-21.00 |
| Sat | 10.00-16.00 |
| Sun | 13.00-21.00 |

Last Admission is one hour before closing.