

## TIMETABLE

### MONDAY

10.00-12.00	Activities Morning (with crèche)
12.00-18.00	Public Hire
18.00-20.00	Private Booking
20.00-22.00	Badminton Club

### TUESDAY

10.00-11.30	Public Hire
11.30-12.45	School Booking
12.45-16.00	Public Hire
16.00-18.00	Primary Football
18.00-19.00	Public Hire
19.00-21.00	Private Booking
21.00-22.00	Public Hire

### WEDNESDAY

10.00-15.30	Gym Ted
15.30-16.30	Beginners Primary Badminton
16.30-17.30	Advanced Primary Badminton
17.30-19.00	Public Hire
19.00-20.00	Karate/School Badminton
20.00-21.00	Karate/Public Hire (3 courts)
21.00-22.00	Private Booking

### THURSDAY

10.00-12.00	Ladies Morning
12.00-15.00	CLOSED
15.00-16.00	Public Hire
16.00-17.00	School Booking
17.00-18.00	Public Hire
18.00-19.00	School Booking
19.00-21.00	Private Booking
21.00-22.00	Public Hire

### FRIDAY

10.00-15.30	Public Hire
15.30-16.30	Gymnastics Club
16.30-18.00	Public Hire
18.00-19.00	Youth Football (secondary only)
19.00-21.00	Private Hire
21.00-22.00	Public Hire

### SATURDAY

10.00-17.00	Public Hire
-------------	-------------

### SUNDAY

13.00-15.00	Public Hire
15.00-18.00	Gymnastics Club
18.00-19.00	Public Hire
19.00-21.00	Private Bookings

## Public Hire

*To guarantee the times and activities you require, it is recommended that you book in advance although it is not essential.. Bookings cannot be taken any earlier than 6 days in advance.*

## GUIDE TO CENTRE ACTIVITES

### Badminton Club (Adults)

Improve your badminton skills by joining this group. All abilities welcome.

### Crèche

Crèche available on Monday 10.00-12.00

### Activities Morning/ Creche

Come along and try an activity. Such as Badminton, short tennis. Depending on numbers. Netball maybe an option.

### Gym Ted

Pre school Gymnastics for children aged 1-5 years old. Please ask at reception for more info

### Primary football

This session is split into separate age groups:

- Primary 1 - 5 from 4.00-5.00pm
- Primary 6 – 7 from 5.00-6.00pm

The session is lead by a SFA coach and the children are given basic skills followed by full games.

### Youth Football

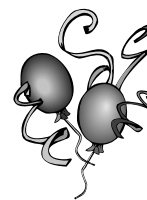
Football for secondary school age children.

### Ladies Morning

Choose from any of our activities on this morning for ladies only.

---

## Birthday Parties



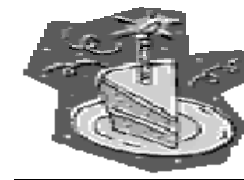
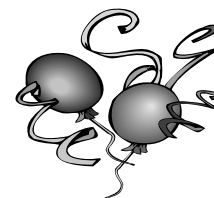
The sports centre is available for booking your child's birthday party. The most popular is the **bouncy castle**

With soft play. Or alternatively you could have any activity your child wishes such as **Football Parties**. The hall is available most weekends, some evenings and school holidays.



It is ideal for children as they have plenty space to run around and ideal for parents as we set out all the equipment for your arrival and clear it away when you are finished.

An area is set aside for food if you require to use it.



## Multi-gym

FOR OVER 16's ONLY

Our fitness room is equipped with a range of cardio-vascular, fixed resistance weight and free weight equipment.

All users must undertake a **Fitness Aberdeenshire** induction. This will allow you to use not only our gym, but all gyms throughout Aberdeenshire. Inductions are practical, so bring your kit and be ready to get hands on!

Personal programmes can be made by request.



### PRICE'S

	Adult	Conc
Single use	£3.90	£2.00
12 session ticket	£39.50	£20.00
6 month ticket	£121.00	£60.50
Annual ticket	£235.00	£117.50

INDUCTION £10.60

## Admission Charges

### Hall

Whole Hall	£28.20
Whole Hall (Concession)	21.15
¼ hall	7.05
¼ hall (Concession)	3.55



### Multi-gym

Hour	3.95
Concession	2.00
12 session card	39.50
Concession	20.00
Induction	10.60
See Multi gym info for more price ideas	

### Activities

Badminton Adult	3.35
Improvers/Junior	2.00
Football	2.00
Crèche	1.55
Keep fit	3.95
Keep fit Concession	2.00
Bouncy Castle Activity	2.00
Gym Ted Activity	2.00/2.70

### Birthday Parties

Whole Hall (per hour) **	14.10
Staff Charge (per hour)	13.90
Bouncy Castle Hire (per hour)	13.80

\*\* ½ or ¼ hall available

### Tennis court

Court (Adult)	7.05
Court (Concession)	3.55

\*Concessions apply to Children under 16, Senior Citizens over 60, Registered Disabled. Other concessions may apply please ask at reception.

Equipment hire available

### Lockers

Lockers are provided. These require 10p, which is returnable.

# Programme & Charges

20th April 09 – 3<sup>rd</sup> July 09  
**Inverbervie Sports  
Centre**

Kirkburn  
Inverbervie  
DD10 0RS  
Tel. 01561 361182

[www.aberdeenshire.gov.uk/recreation](http://www.aberdeenshire.gov.uk/recreation)

**Aberdeenshire**  
COUNCIL



### Opening Times

<b>Mon-Wed</b>	<b>10.00-22.00</b>
<b>Thurs</b>	<b>10.00-12.00</b>
	<b>15.00-22.00</b>
<b>Fri</b>	<b>10.00-22.00</b>
<b>Sat</b>	<b>10.00-17.00</b>
<b>Sun</b>	<b>13.00-21.00</b>