

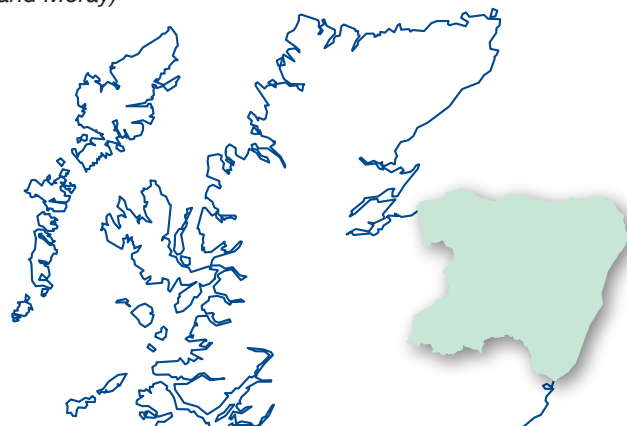
Key Statistics:

- The total area of all types of woodland in Grampian Conservancy is 154,902 hectares. This represents 17.7% of the total land area, around the Scottish average.
- 98,011 hectares (63%) is in private ownership; 56,891 hectares (37%) is owned by or leased to Forestry Commission Scotland.
- There are a total of 2,498 woods over 2 hectares in Grampian Conservancy, with a mean wood area of 62 hectares.
- Conifer woodland is the dominant forest type, representing 72% of all woodland. Broadleaved woodland represents 10%, with mixed woodland at 6% and open space within woodlands at 9%.
- The predominant conifer species is Scots pine, covering 41,284 hectares or 36% of all conifer forests. 68% of all Scots pine is within private woodlands.
- The main broadleaved species is birch covering 10,167 hectares or 50% of all broadleaved species. 93% of birch is within private woodlands.
- Woodland cover has increased by 23,990 hectares from 15.0% to 17.7% of the land area since 1980.
- Aberdeenshire has 9% of Scotland's forest area, and 4.2% of the UK total of 2.83 million hectares.

The 1980 Forestry Census and 1994 National Inventory of Woodlands, are surveys undertaken by very different sampling methods. Within the 1980 Census the minimum area of woodland was 0.25 hectares whilst in the Inventory it is 2 hectares. The apparent differences shown in the following table should therefore be treated with caution, particularly where areas are small.

The most recent Forestry Commission Scotland figures estimate that around 10,700 people are employed in the forestry sector in Scotland. Timber production has increased since 2005. However, the increase in demand for timber has not been reflected in an increase in prices, largely as a result of the generally low price level of internationally traded timber, particularly from Scandinavia and the Baltic States. The area of woodland in Scotland stood at 1,337,000 hectares in 2006, representing 17% of Scotland's total surface area and 40% of the UK's total woodland. The area has remained stable over 2005 and 2006 as new planting has reduced slightly and restocking of existing woodland has increased.

Grampian Conservancy Area (Aberdeen City, Aberdeenshire, and Moray)



© Crown copyright. All rights reserved. Aberdeenshire Council Licence No. 0100020767 2009

Woodland Area (hectares) 1980 and 1994

	Census 31/03/80	Inventory 31/03/94
Area (including Inland Water)	875,303	875,530
Forestry Commission Woodland Area	59,366	56,891
Private Woodland Area	71,546	98,011
Total Conifers	99,436	113,142
Total Broadleaf	10,890	11,369
Total Area of Woodland	130,912	154,902
% Woodland Area	15.0	17.7

Source: National Inventory of Woodland and Trees, inventory report for Grampian Region, March 1994. Note: not completely comparable.

These statistics are drawn from the report 'Agriculture in Aberdeenshire - Looking to the Future' which analyses trends for the sector during 2003-2007 and was published on 26 November 2008. It can be found at:

www.aberdeenshire.gov.uk/support/agriculture/future.asp

The publishers assume no responsibility for errors, omissions or inaccuracies of source statistics.

New National Forest Inventory and Production Forecast for Scotland

Work is underway in a project to update the complete forest inventory of Scotland and to utilise the data in a fully integrated computer modelling programme to calculate a national Production Forecast (PF). All woodlands equal to or greater than 0.5ha will be included. It is intended that the information on conifers will be available in 2011 and will be updated every 5 years thereafter.

The project, which is being organised by Forestry Commission Scotland (FCS), will for the first time combine data from private sector (PS) forests and the National Forest Estate (NFE) which is managed by FCS. Improved mapping techniques will result in greatly improved levels of accuracy, vital for well-informed commercial and investment decision-making. The model will predict distribution of volume by size assortments for major species. *Figures 1-5* give an example of the level of detail which will be available nationally and are published here courtesy of Forestry Commission Scotland.

Total timber harvest in Grampian Conservancy in 2007/8 was 725,000 tonnes of which 362,000 tonnes (50%) was contributed by FCS forests. The forecast for the private sector was 480,000 tonnes but only 363,000 tonnes was harvested, a shortfall of over 30% from the forecast made as recently as 2005. Although some of the variance can be accounted for by weak timber prices failing to attract timber to market, improving the accuracy of the private sector inventory will be extremely beneficial for managers and wood processors.

For information about the National Forest Inventory contact Ben Ditchburn, NFIGB Programme Manager, Forestry Commission, 231 Corstorphine Road, Edinburgh EH12 7AT Tel: 0131 3340303 or go to: www.forestry.gov.uk/forestry/INFD-7J5KRD

Figure 1 - Grampian FCS and PS Forecast 2007-2036: Total Timber Volume by Species

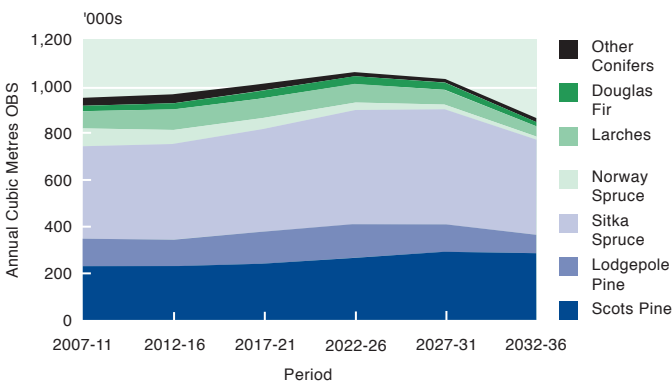


Figure 2 - Grampian FCS and PS Forecast 2007-2036: Timber Volume by Species Groups

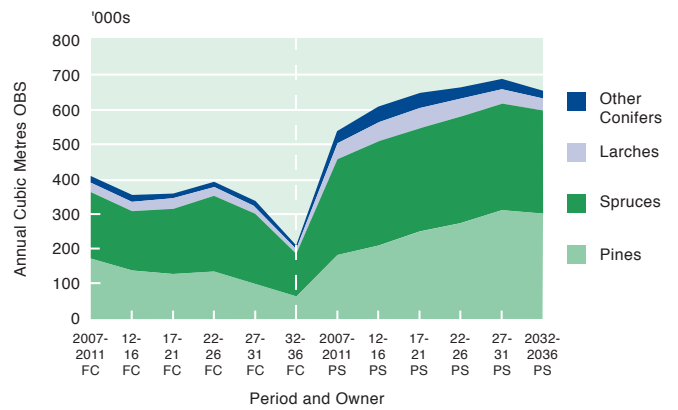


Figure 3 - Grampian FCS and PS Forecast 2007-2036: Timber Assortment Volume

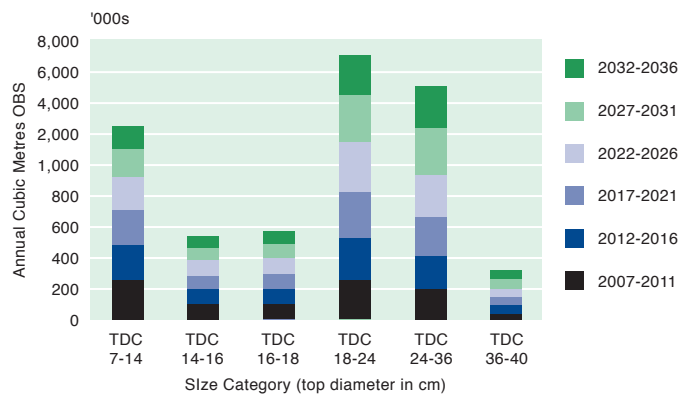


Figure 4 - Grampian FCS and PS Forecast 2007-2036: Timber Volume by Size Classes

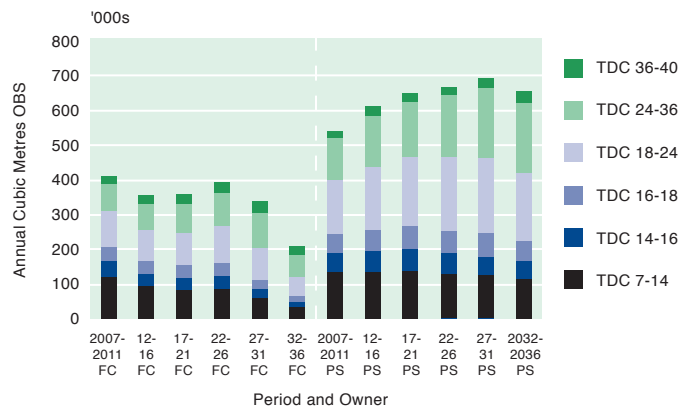
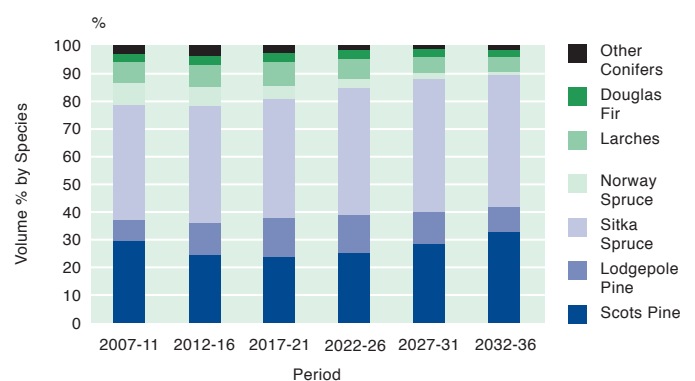


Figure 5 - Grampian FCS and PS Forecast 2007-2036: Timber Volume % by Species



The publishers assume no responsibility for errors, omissions or inaccuracies of source statistics.