









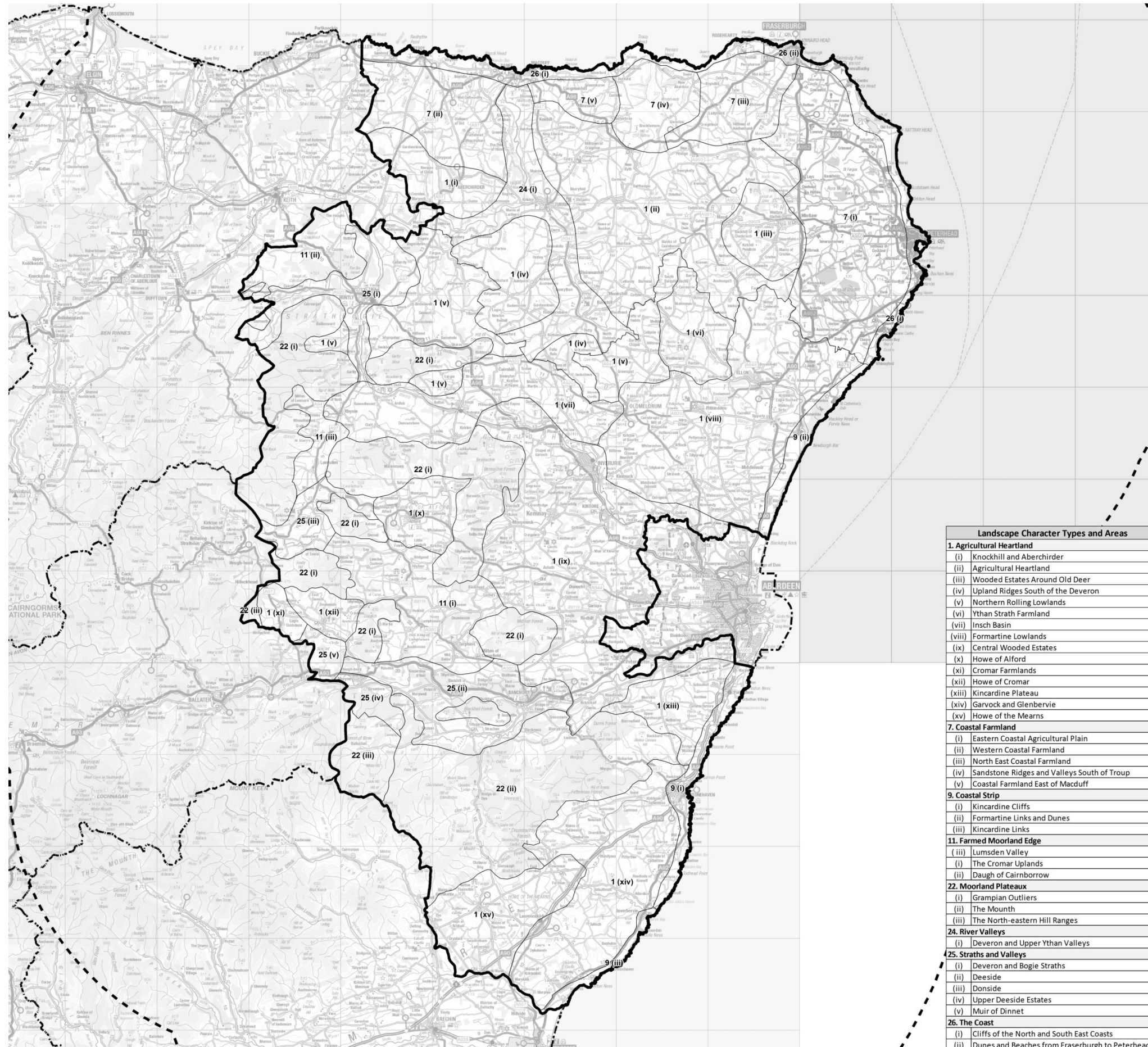
Strategic Landscape Capacity Assessment for Wind Energy in Aberdeenshire

March 2014

7933 ABS 136

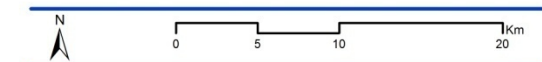
Legend

-  Study Area
 -  Study Area 30km Buffer
 -  Scottish Local Authority Boundaries
 -  Landscape Character Type / Area Boundary (see Table 3.1 for list)
- Capacity**
-  High Capacity
 -  Medium Capacity
 -  Low Capacity
 -  No Capacity



Landscape Character Types and Areas	
1. Agricultural Heartland	
(i)	Knockhill and Aberchirder
(ii)	Agricultural Heartland
(iii)	Wooded Estates Around Old Deer
(iv)	Upland Ridges South of the Deveron
(v)	Northern Rolling Lowlands
(vi)	Ythan Strath Farmland
(vii)	Insch Basin
(viii)	Formartine Lowlands
(ix)	Central Wooded Estates
(x)	Howe of Alford
(xi)	Cromar Farmlands
(xii)	Howe of Cromar
(xiii)	Kincardine Plateau
(xiv)	Garvock and Glenbervie
(xv)	Howe of the Mearns
7. Coastal Farmland	
(i)	Eastern Coastal Agricultural Plain
(ii)	Western Coastal Farmland
(iii)	North East Coastal Farmland
(iv)	Sandstone Ridges and Valleys South of Troup
(v)	Coastal Farmland East of Macduff
9. Coastal Strip	
(i)	Kincardine Cliffs
(ii)	Formartine Links and Dunes
(iii)	Kincardine Links
11. Farmed Moorland Edge	
(i)	Lumsden Valley
(ii)	The Cromar Uplands
(iii)	Daugh of Cairnborrow
22. Moorland Plateaux	
(i)	Grampian Outliers
(ii)	The Mounth
(iii)	The North-eastern Hill Ranges
24. River Valleys	
(i)	Deveron and Upper Ythan Valleys
25. Straths and Valleys	
(i)	Deveron and Bogie Straths
(ii)	Deeside
(iii)	Donside
(iv)	Upper Deeside Estates
(v)	Muir of Dinnet
26. The Coast	
(i)	Cliffs of the North and South East Coasts
(ii)	Dunes and Beaches from Fraserburgh to Peterhead

Figure 6.1a (v)
Underlying Landscape Capacity
Very Large Turbines
(125m+ Height)



This map is reproduced from Ordnance Survey material with the permission of Ordnance Survey on behalf of the Controller of Her Majesty's Stationary Office © Crown Copyright 2014. Unauthorised reproduction infringes Crown copyright and may lead to prosecution or civil proceedings. AL100017966

Strategic Landscape Capacity Assessment for Wind Energy in Aberdeenshire

March 2014

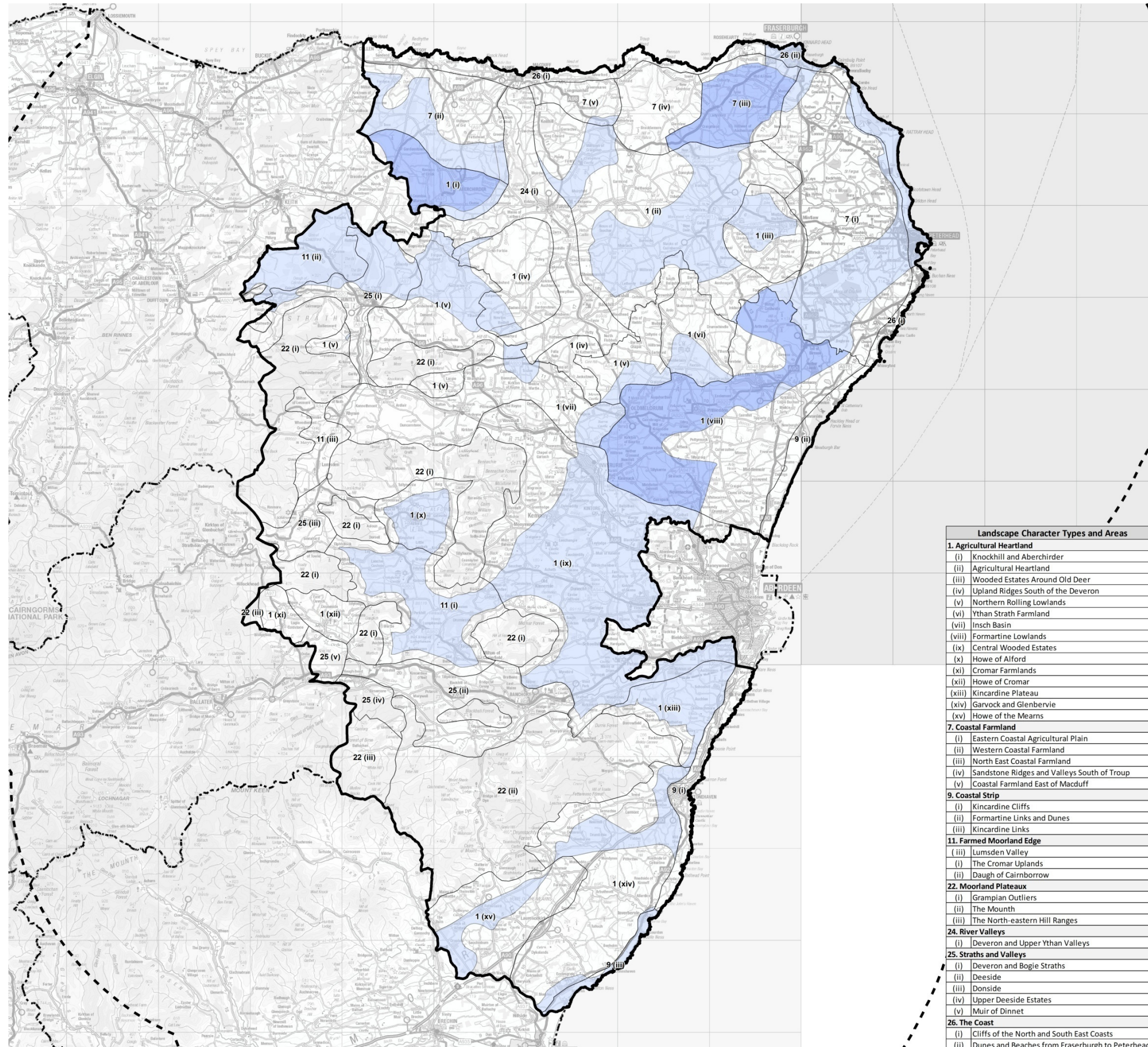
7933 ABS 137

Legend

- Study Area
- Study Area 30km Buffer
- Scottish Local Authority Boundaries
- Landscape Character Type / Area Boundary (see Table 3.1 for list)

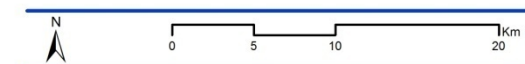
Capacity

- High Capacity
- Medium Capacity
- Low Capacity
- No Capacity



Landscape Character Types and Areas	
1. Agricultural Heartland	
(i)	Knockhill and Aberchirder
(ii)	Agricultural Heartland
(iii)	Wooded Estates Around Old Deer
(iv)	Upland Ridges South of the Deveron
(v)	Northern Rolling Lowlands
(vi)	Ythan Strath Farmland
(vii)	Insch Basin
(viii)	Formartine Lowlands
(ix)	Central Wooded Estates
(x)	Howe of Alford
(xi)	Cromar Farmlands
(xii)	Howe of Cromar
(xiii)	Kincardine Plateau
(xiv)	Garvock and Glenbervie
(xv)	Howe of the Means
7. Coastal Farmland	
(i)	Eastern Coastal Agricultural Plain
(ii)	Western Coastal Farmland
(iii)	North East Coastal Farmland
(iv)	Sandstone Ridges and Valleys South of Troup
(v)	Coastal Farmland East of Macduff
9. Coastal Strip	
(i)	Kincardine Cliffs
(ii)	Formartine Links and Dunes
(iii)	Kincardine Links
11. Farmed Moorland Edge	
(i)	Lumsden Valley
(ii)	The Cromar Uplands
(iii)	Daugh of Cairnborrow
22. Moorland Plateaux	
(i)	Grampian Outliers
(ii)	The Mounth
(iii)	The North-eastern Hill Ranges
24. River Valleys	
(i)	Deveron and Upper Ythan Valleys
25. Straths and Valleys	
(i)	Deveron and Bogie Straths
(ii)	Deeside
(iii)	Donside
(iv)	Upper Deeside Estates
(v)	Muir of Dinnet
26. The Coast	
(i)	Cliffs of the North and South East Coasts
(ii)	Dunes and Beaches from Fraserburgh to Peterhead

Figure 6.1b (i)
Remaining Landscape Capacity
Small / Medium Turbines
(15 to <30m Height)



This map is reproduced from Ordnance Survey material with the permission of Ordnance Survey on behalf of the Controller of Her Majesty's Stationary Office © Crown Copyright 2014. Unauthorised reproduction infringes Crown copyright and may lead to prosecution or civil proceedings. AL100017966

Strategic Landscape Capacity Assessment for Wind Energy in Aberdeenshire

March 2014

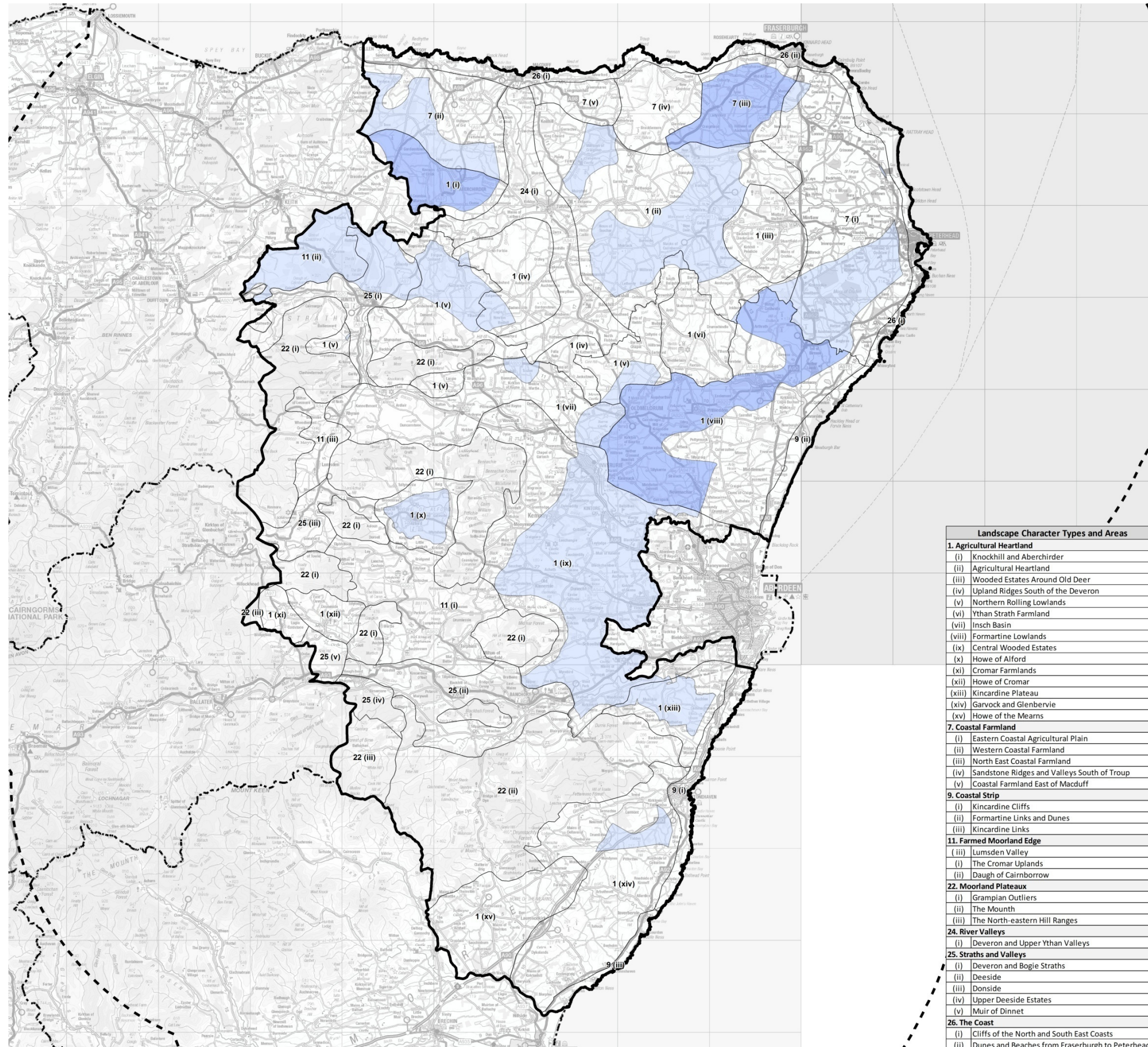
7933 ABS 138

Legend

-  Study Area
-  Study Area 30km Buffer
-  Scottish Local Authority Boundaries
-  Landscape Character Type / Area Boundary (see Table 3.1 for list)

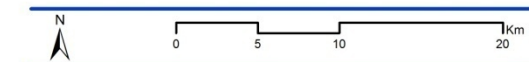
Capacity

-  High Capacity
-  Medium Capacity
-  Low Capacity
-  No Capacity



Landscape Character Types and Areas	
1. Agricultural Heartland	
(i)	Knockhill and Aberchirder
(ii)	Agricultural Heartland
(iii)	Wooded Estates Around Old Deer
(iv)	Upland Ridges South of the Deveron
(v)	Northern Rolling Lowlands
(vi)	Ythan Strath Farmland
(vii)	Insch Basin
(viii)	Formartine Lowlands
(ix)	Central Wooded Estates
(x)	Howe of Alford
(xi)	Cromar Farmlands
(xii)	Howe of Cromar
(xiii)	Kincardine Plateau
(xiv)	Garvock and Glenbervie
(xv)	Howe of the Means
7. Coastal Farmland	
(i)	Eastern Coastal Agricultural Plain
(ii)	Western Coastal Farmland
(iii)	North East Coastal Farmland
(iv)	Sandstone Ridges and Valleys South of Troup
(v)	Coastal Farmland East of Macduff
9. Coastal Strip	
(i)	Kincardine Cliffs
(ii)	Formartine Links and Dunes
(iii)	Kincardine Links
11. Farmed Moorland Edge	
(i)	Lumsden Valley
(ii)	The Cromar Uplands
(iii)	Daugh of Cairnborrow
22. Moorland Plateaux	
(i)	Grampian Outliers
(ii)	The Mounth
(iii)	The North-eastern Hill Ranges
24. River Valleys	
(i)	Deveron and Upper Ythan Valleys
25. Straths and Valleys	
(i)	Deveron and Bogie Straths
(ii)	Deeside
(iii)	Donside
(iv)	Upper Deeside Estates
(v)	Muir of Dinnet
26. The Coast	
(i)	Cliffs of the North and South East Coasts
(ii)	Dunes and Beaches from Fraserburgh to Peterhead

Figure 6.1b (ii)
Remaining Landscape Capacity
Medium Turbines
(30 to <50m Height)



This map is reproduced from Ordnance Survey material with the permission of Ordnance Survey on behalf of the Controller of Her Majesty's Stationary Office © Crown Copyright 2014. Unauthorised reproduction infringes Crown copyright and may lead to prosecution or civil proceedings. AL100017966