

Settlement Summary: Mintlaw

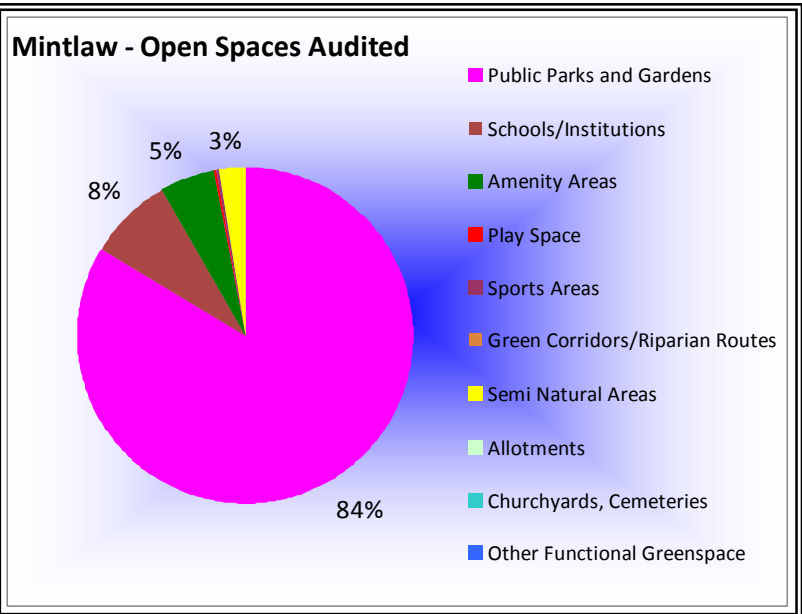
Population: 3560

Observations (of Community Council)

None received.

Green Network Links

There is good green infrastructure in and around Mintlaw, including the Formartine and Buchan Way to the north and a variety of interconnecting paths. A number of direct path links are currently under construction, or at the advanced planning stage, between the village and Aden Country Park to the west. Additional links within the village are proposed within the Core Paths Plan.

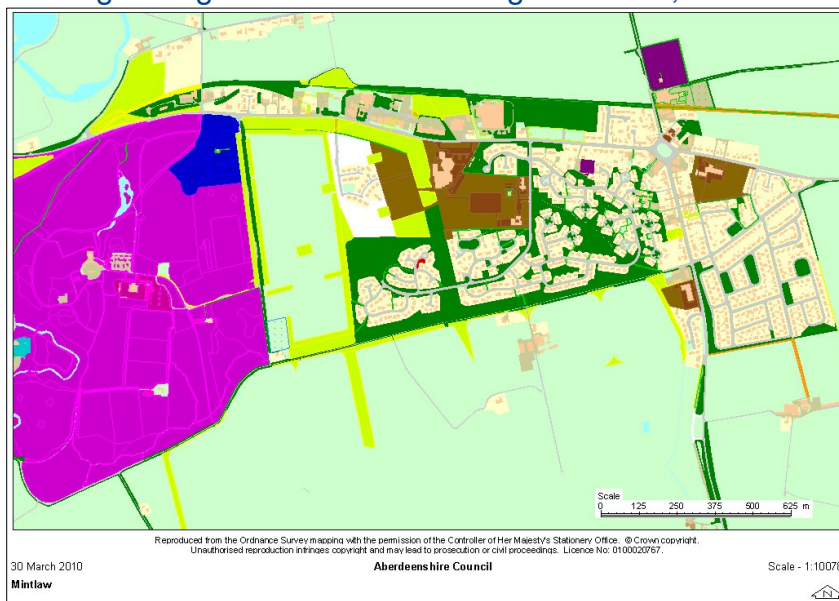


Open Space Requirements

Auditors' recommendations include for a larger variety of equipment being provided at the Baluss View and Park View play areas. The main recreation ground at Mintlaw, adjacent to the garden centre, is in the ownership of the community, and about to be upgraded. The woodland behind the industrial estate has poor access, and this site, although very damp, may have potential as a nature reserve.

Some areas which may benefit from additional planting are highlighted e.g. Mormond Crescent Amenity Area, and Woodside Crescent natural woodland area.

Overall Mintlaw is provided with a range of open space types, although sports facilities are limited to pitch provision. The large proportion of park space reflects the adjacent Aden Country Park, offering a range of facilities including woodland, mown areas with picnic tables, and a small lake, as well as a heritage museum and cafe.



The Council is aware of recent queries regarding space for allotments in Mintlaw. Although no potential has been specifically identified by auditors, there may well be land available within the community for food growing. One way of exploring this potential is through the 'Landshare scheme' which connects people with land which they would be willing to share, with people interested in growing local food. (www.landshare.net)

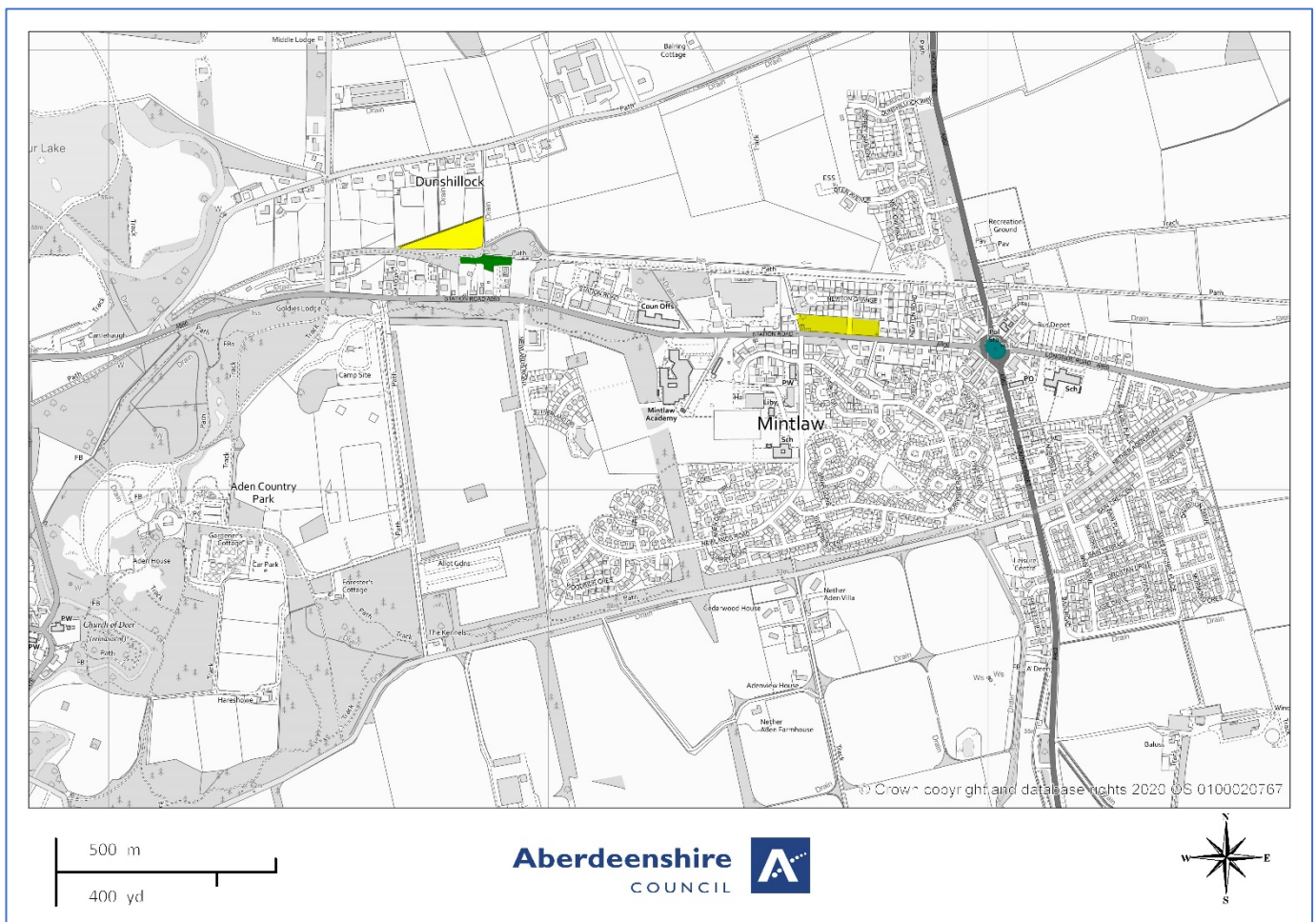
- | | | |
|-----------------------------|----------------------|---------------------------------|
| Public Parks and Gardens | Schools/Institutions | Amenity Areas |
| Play Space | Sports Areas | Green Corridors/Riparian Routes |
| Semi Natural Areas | Allotments | Churchyards, Cemeteries |
| Other Functional Greenspace | | |

Open Space Audit Update 2019: Mintlaw

An update exercise was carried out in 2019 to account for new open spaces arising from major developments completed since the Open Space Audit 2010, and to address any known disparities/gaps in information. The scope of the update exercise did not include a review of the Open Space Audit 2010. The Audit update 2019 has been used to assist in the preparation of the Proposed Aberdeenshire Local Development Plan 2020.

This is an interim Audit. Whilst this information will feed into a future comprehensive Open Space Audit, at this stage there may be some auditing inconsistencies across settlements due to factors such as community interest, and landscape/topography influencing how open spaces are identified, particularly at and around the edges of settlement.

Allotments are excluded as these are audited separately as part of the Food Growing Strategy 2019-2030.



- | | | |
|---|---|---|
| ■ Public Parks and Gardens | ■ Schools/Institutions | ■ Amenity Areas |
| ■ Play Space | ■ Sports Areas | ■ Green Corridors/Riparian Routes |
| ■ Semi Natural Areas | ■ Allotments | ■ Churchyards, Cemeteries |
| ■ Other Functional Greenspace | ■ Civic Space | |