

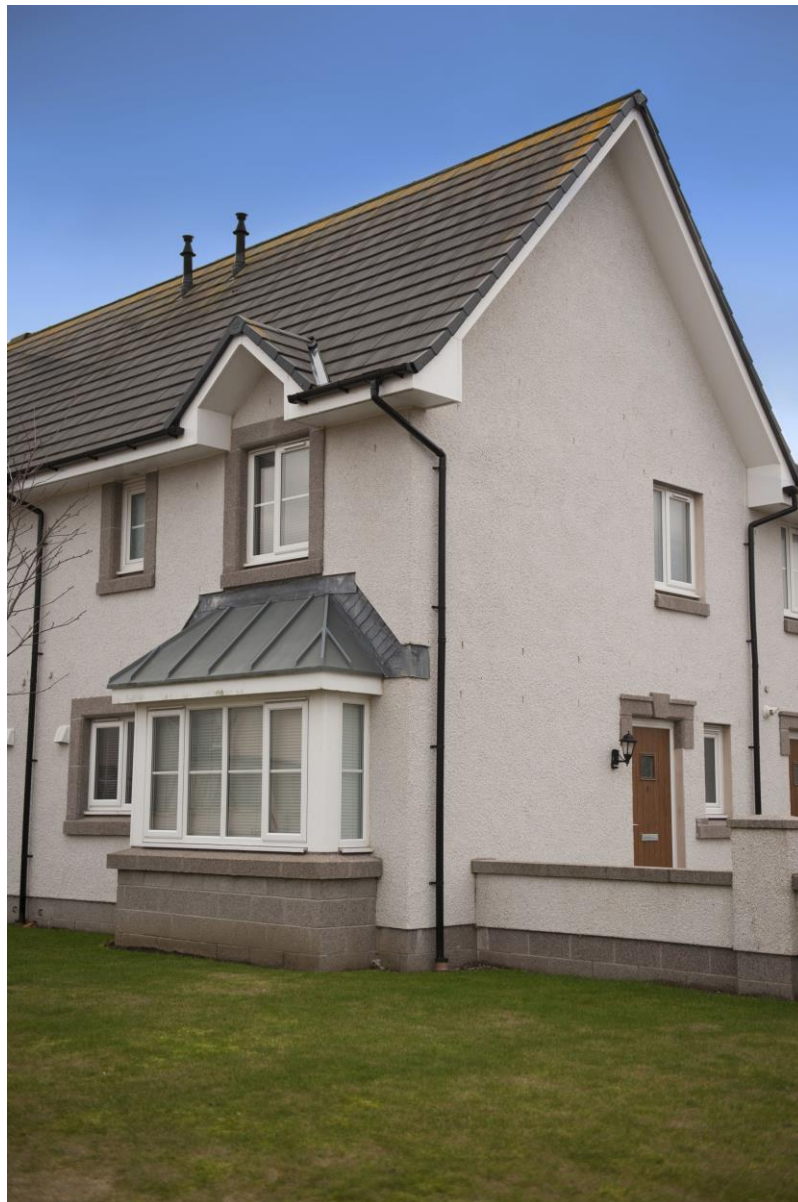
From mountain to sea

Low Cost Shared Equity Property FOR SALE

3 Berryhill Circle, Westhill AB32 6BE

2 bed Mews House

£97,295



Low Cost Shared Equity Property Schedule

Description	Price
2 bed Terrace Mews House	£97,295
Floor Space	Income Threshold
Unknown	£37,000 or less
Included in Sale	Factoring Charge
All Blinds and flooring included.	* Life Property Management. The charge varies. Bills are generally biannually but payment could possibly be made monthly. The maximum bill the owner has received has been approx. £200. This includes maintenance of the landscaping for the whole housing scheme as well as buildings insurance for the block of 6 houses.
Parking Arrangements	Council Tax Band
One parking space in shared car park. Two guest spaces between six houses. Plenty of space on the road at front of house if any additional cars	Band D
Garden	Year Built
No private or shared garden	2013
Heating Type	Eligibility Criteria
Gas Central Heating	See Guidance notes for Eligibility Criteria
Energy Performance Rating	Closing Date
Band C	Return applications as soon as possible. Applications will be assessed on a first come basis.

The information in this schedule regarding the specific property has been supplied by the owner and whilst every care has been taken in the preparation of this schedule and the information is believed to be correct, it does not warrant or constitute any offer or contract.

*Factoring fees may be subject to change and may require an initial deposit. Please discuss with your solicitor if nominated.

Living Room



Alternative View of Living Room



Kitchen



Alternative View of Kitchen



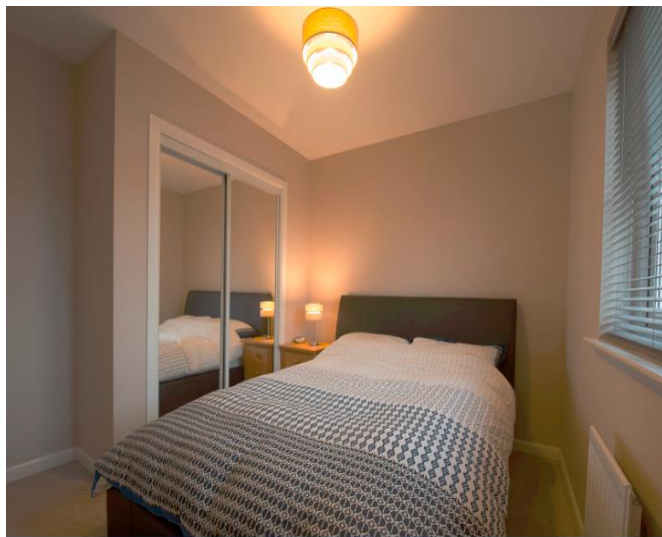
Downstairs Toilet



Upstairs Bathroom



Bedroom 1



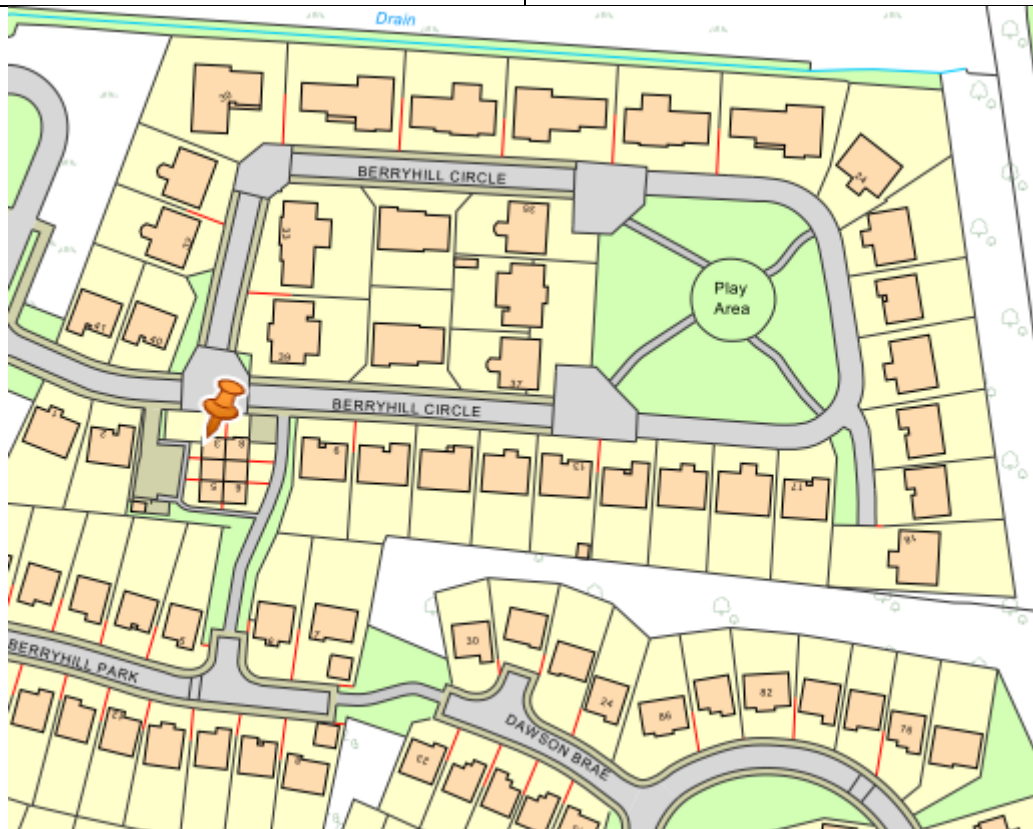
Bedroom 2



Location



Westhill is approximately 6.5 miles west of Aberdeen. Westhill is well equipped with a range of public services, including several primary schools and a high school, Westhill Academy. Other facilities include a golf course, tennis club, leisure centre & swimming pool.



Further Information

For further information please contact:

Development Officer - 01467 539457

LCHO@aberdeenshire.gov.uk