

From mountain to sea

Low Cost Shared Equity Property FOR SALE

Flat 3 Knightsbridge, High Street, Inverurie

2 bed 2nd Floor Flat

£99,200



Low Cost Shared Equity Property Schedule

Description	Price
2 bed 2 nd Floor Flat	£99,200
Floor Space	Income Threshold
Unknown	£37,000 or less
Included in Sale	Factoring Charge
Dishwasher, Oven, Fridge, Curtains, fully furnished Bathroom	*£35 per month for servicing risers, cleaning and maintenance of communal areas & communal electricity costs. Building Insurance of £120 per year also payable to the factor.
Parking Arrangements	Council Tax Band
One allocated space	Band D
Garden	Year Built
To rear of development	2012
Heating Type	Eligibility Criteria
Gas Combi Boiler	See Guidance notes for Eligibility Criteria
Energy Performance Rating	Closing Date
Not available	Return applications as soon as possible. Applications will be assessed on a first come basis.

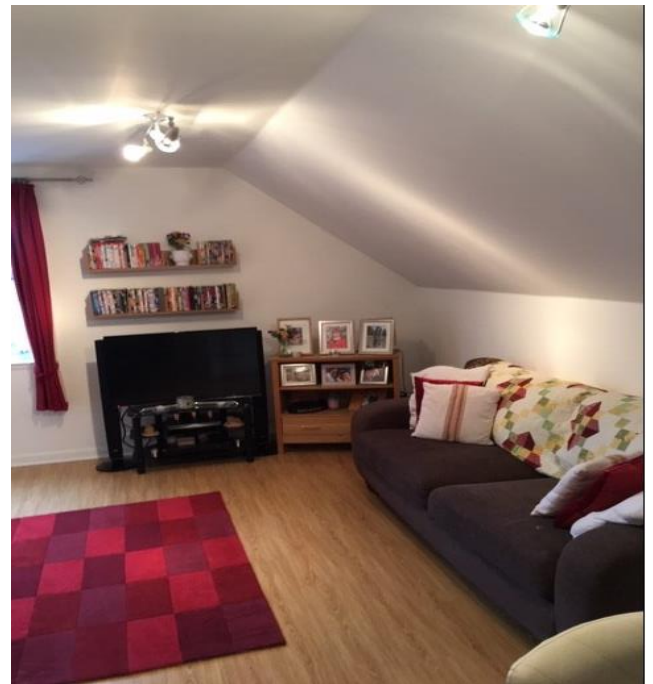
The information in this schedule regarding the specific property has been supplied by the owner and whilst every care has been taken in the preparation of this schedule and the information is believed to be correct, it does not warrant or constitute any offer or contract.

*Factoring fees may be subject to change and may require an initial deposit. Please discuss with your solicitor if nominated.

Living Room



Alternative View of Living Room



Kitchen



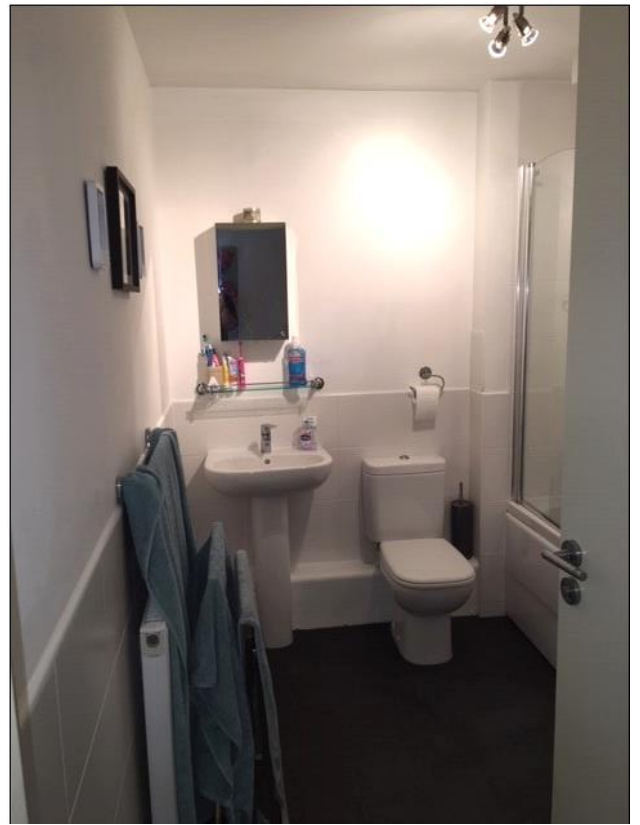
Alternative View of Kitchen



Bathroom



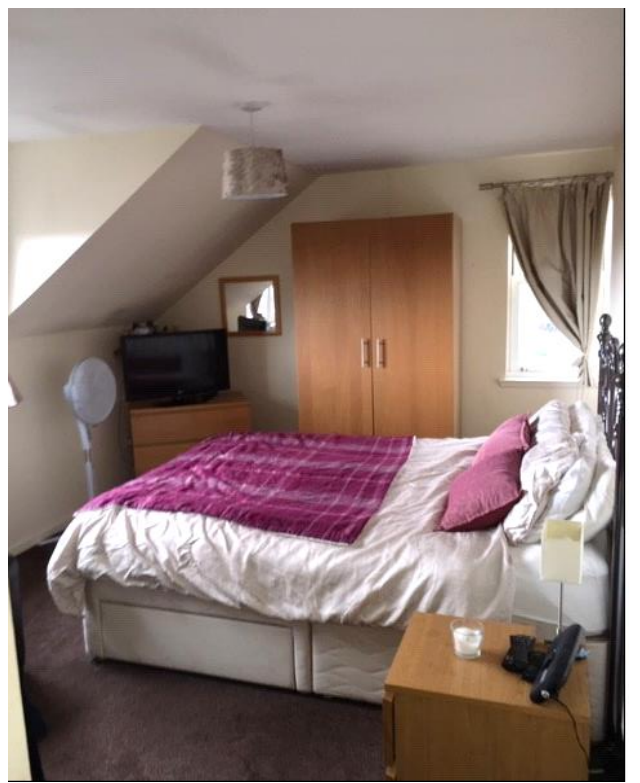
Alternative View of Bathroom



Bedroom 1



Alternative View of Bedroom 1



Bedroom 2



Alternative View of Bedroom 2



Location



Inverurie is situated on the A96 just a 35 minute drive north west of Aberdeen. Inverurie is an attractive town set in striking countryside and is close to one of the best-loved hills in the Grampian Highlands, Bennachie. The town is also within easy reach of Aberdeen airport, which is just under 12 miles to the south west.

Inverurie is a bustling market town with lots to do and see. The town is home to a good selection of shopping outlets and restaurants as well as a number of local attractions.



Further Information

For further information please contact:

Development Officer - 01467 539457

LCHO@aberdeenshire.gov.uk