

From mountain to sea

Low Cost Shared Equity Property FOR SALE

7 Main Road East, Echt

3 Bed Mid Terraced House

£159,481



Low Cost Shared Equity Property Schedule

Description	Price
3 bed mid-terraced house	£159,481
Floor Space	Income Threshold
90m ²	£54,000
Included in Sale	Factoring Charge
Cooker and Hob All Flooring Garden Shed Blinds	❖ £13 approx. per month for upkeep of development/communal garden areas
Parking Arrangements	Council Tax Band
2 car spaces at back of property	Band D
Garden	Year Built
Private Garden	2013
Heating Type	Eligibility Criteria
Oil	See Guidance notes for Eligibility Criteria
Energy Performance Rating	Closing Date
B (84)	Return applications as soon as possible. Applications will be assessed on a first come basis.

The information in this schedule regarding the specific property has been supplied by the owner and whilst every care has been taken in the preparation of this schedule and the information is believed to be correct, it does not warrant or constitute any offer or contract.

- ❖ Factoring fees may be subject to change and may require an initial deposit. Please discuss with your solicitor if nominated.

Lounge



Alternative View of Lounge



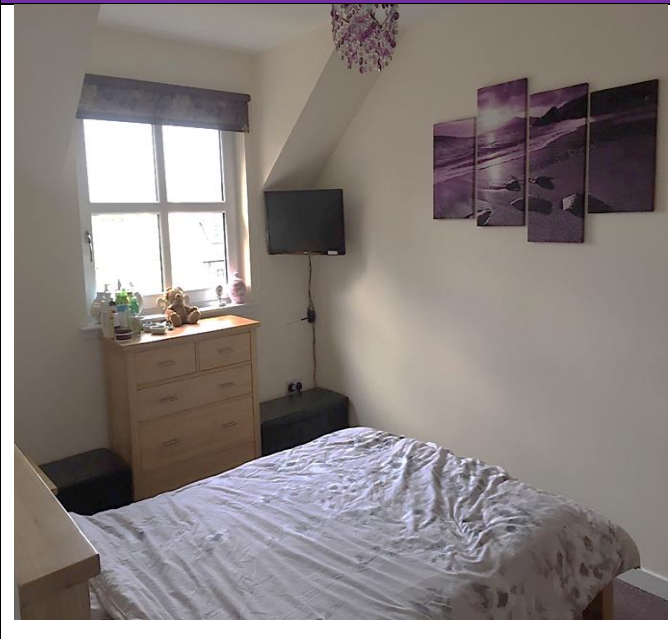
Kitchen/Dining Area



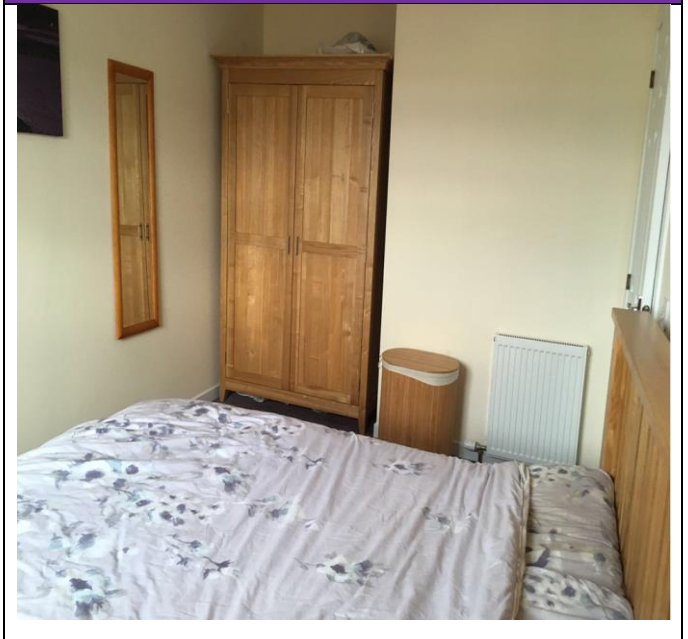
Alternative View of Kitchen/Dining Area



Master Bedroom



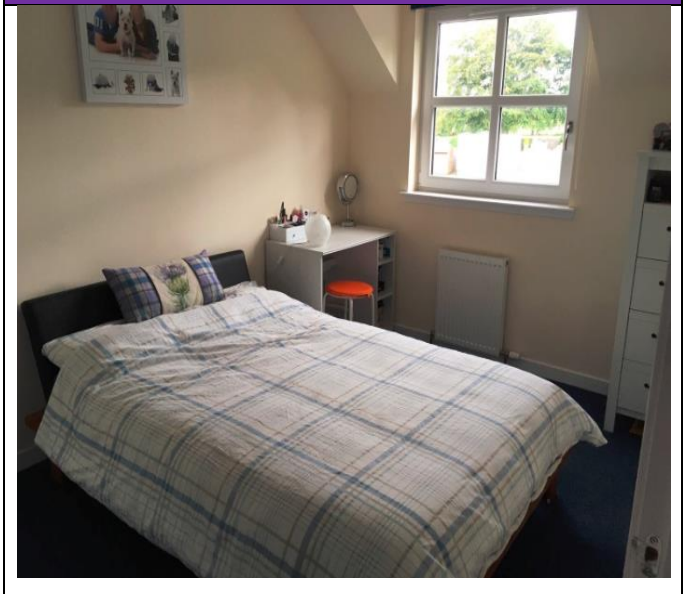
Alternative View of Master Bedroom



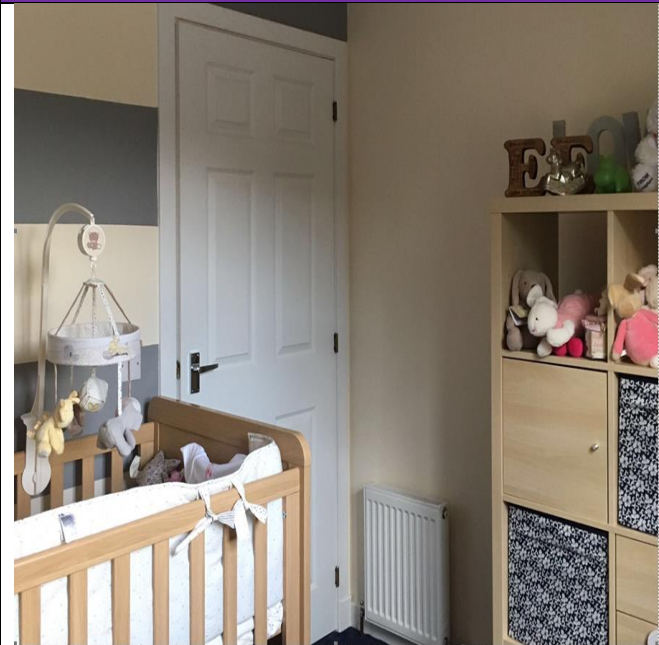
Bedroom 2



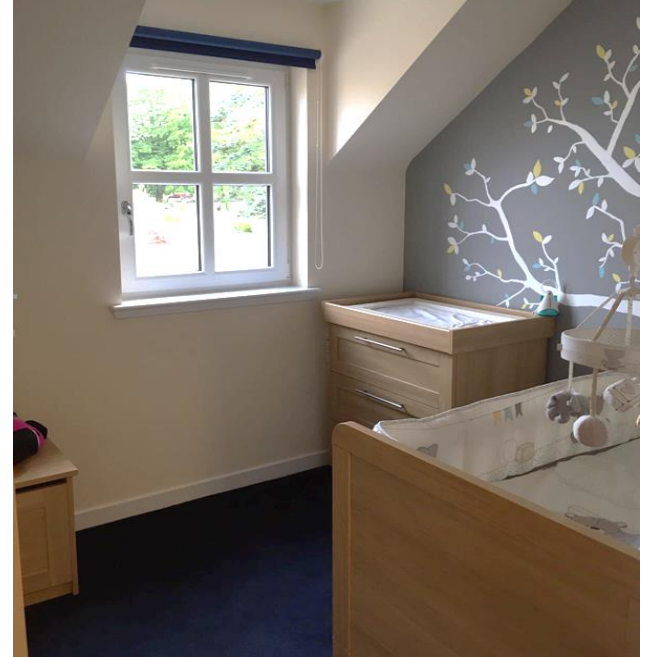
Alternative View of Bedroom 2



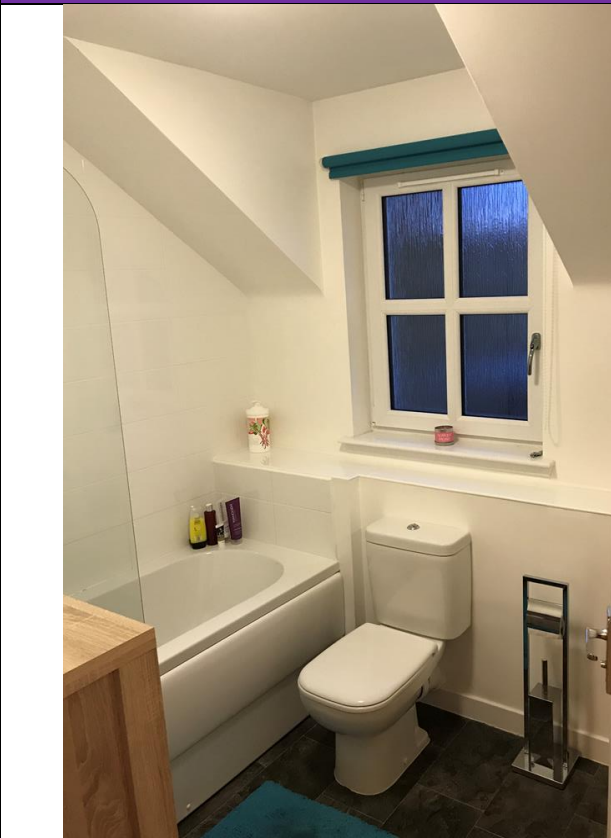
Bedroom 3



Alternative View of Bedroom 3



Upstairs Bathroom



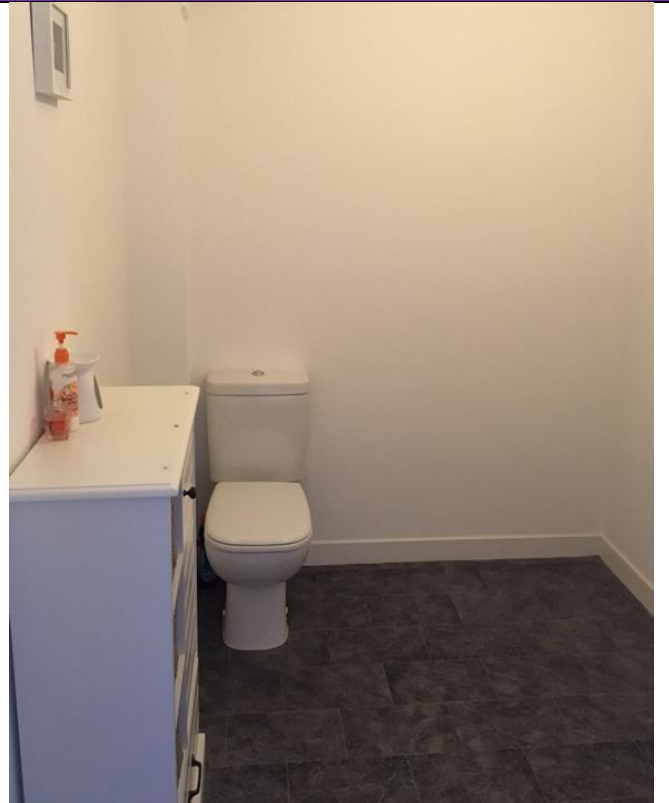
Alternative View of Upstairs Bathroom



Downstairs Toilet



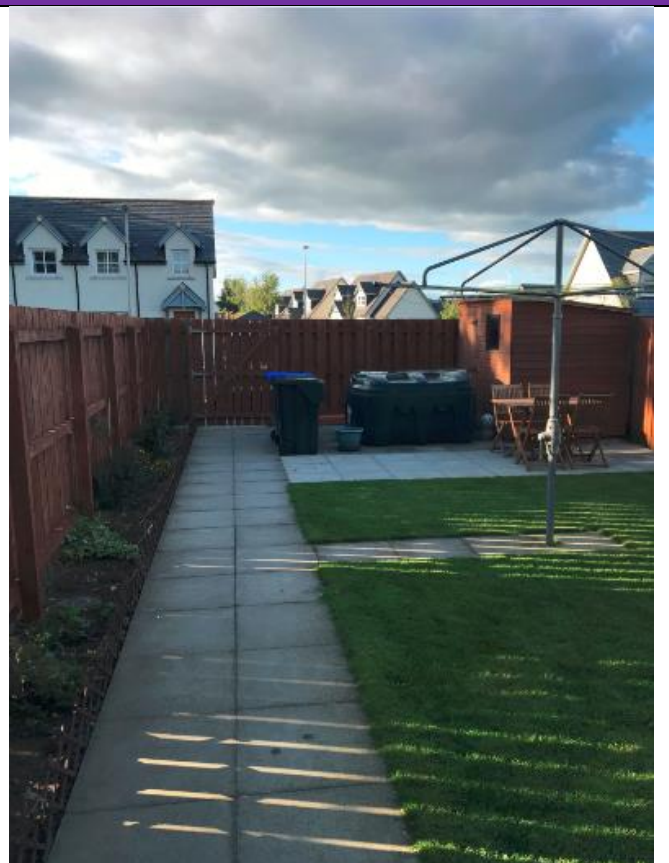
Alternative View of Downstairs Toilet



View from the back of house



Alternative View from the back of house



Location



Echt is a small village situated only 12 miles west of Aberdeen in picturesque countryside. The village has its own shop and post office, Tandoori restaurant, primary school, church, large park and access to countryside walks close by. A few minutes' drive away are the towns of Westhill and Banchory where a wide range of amenities are on offer.



Further Information

For further information please contact:

Development Officer - 01467 539457

LCHO@aberdeenshire.gov.uk