

From mountain to sea

Low Cost Shared Equity Property FOR SALE

5 Angus Avenue, Fetterangus

3 Bed Semi-Detached House

£116,800



Low Cost Shared Equity Property Schedule

Description	Price
3 Bed Semi-Detached House	£116,800
Floor Space	Income Threshold
Approx. 87m ²	£43,000
Included in Sale	Factoring Charge
No items identified	* No Factoring
Parking Arrangements	Council Tax Band
Parking available on own drive	Band C
Garden	Year Built
Private Garden to front and rear	2011
Heating Type	Eligibility Criteria
Air Source Heat Pump to Radiators (Samsung)	See Guidance notes for Eligibility Criteria
Energy Performance Rating	Closing Date
Unknown	Return applications as soon as possible. Applications will be assessed on a first come basis.

The information in this schedule regarding the specific property has been supplied by the owner and whilst every care has been taken in the preparation of this schedule and the information is believed to be correct, it does not warrant or constitute any offer or contract.

*Factoring fees may be subject to change and may require an initial deposit. Please discuss with your solicitor if nominated.

Living Room



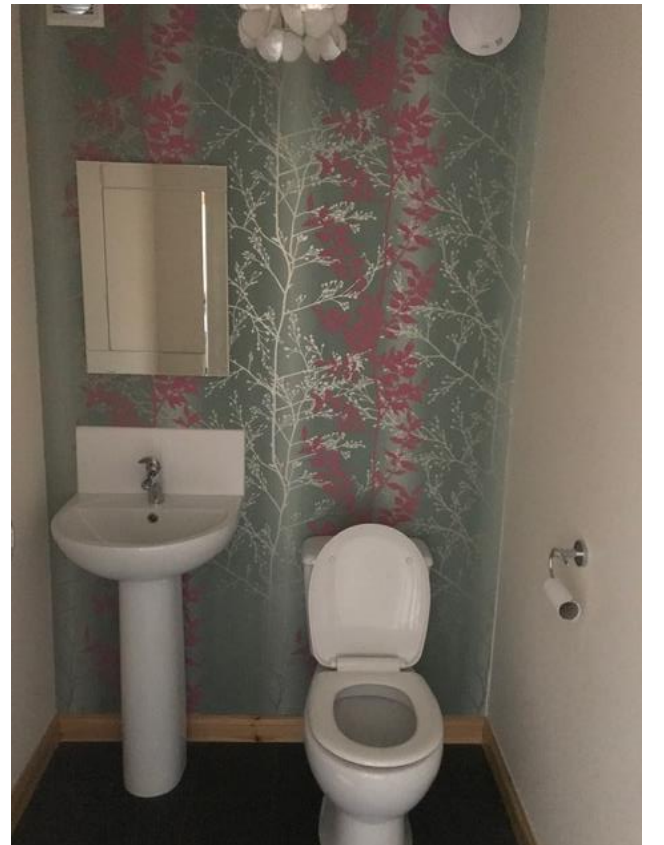
Kitchen



Hall



Downstairs Toilet



Bedroom 1



Alternative View of Bedroom 1



Bedroom 2



Alternative View of Bedroom 2



Bedroom 3



Upper Hall



Bathroom



Alternative View of Bathroom



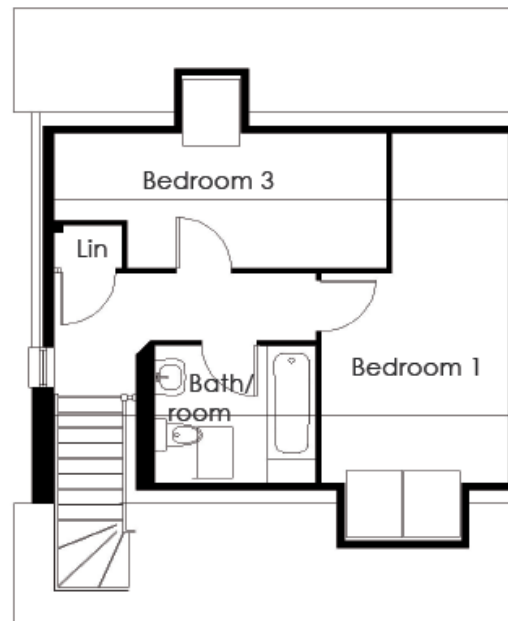
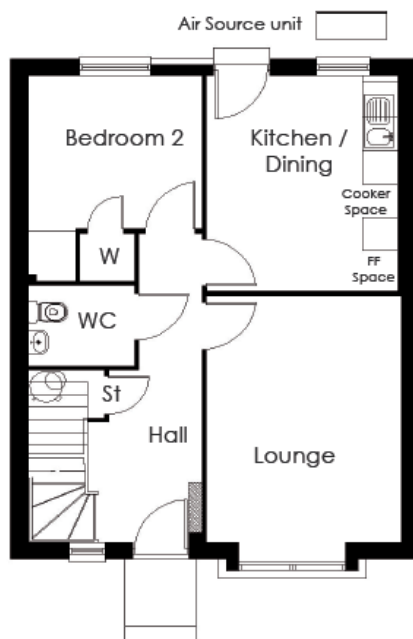
Patio area and Rear Garden



Rear Garden



Floor Plan – For illustrative purposes only



Location



Fetterangus is a community spirited village with a local school, village hall and a pub that serves meals on the weekend. A new village sports pavilion is due to open shortly

Fetterangus is 31 miles north of Aberdeen and only a 3 mile drive from the amenities of Mintlaw which include a good range of shops, eating places, a garden centre, library, secondary schooling, a health centre, dentist, bowling club and the recently opened Community Hub. Also nearby there is the popular Aden Country Park and Pitfour Lake.



Further Information

For further information please contact:

Development Officer - 01467 539457

LCHO@aberdeenshire.gov.uk