

From mountain to sea

Low Cost Shared Equity Property FOR SALE

7 Brighead Way, Inverbervie, DD10 0AJ

3 Bed End Terrace House

£144,480



Low Cost Shared Equity Property Schedule

Description	Price
3 bed end terrace house	£144,480
Floor Space	Income Threshold
108m ²	£53,000
Included in Sale	Factoring Charge
Can be negotiated – dining room table and chairs and furniture from two spare rooms	*PMC Management & Lettings cover ground maintenance
Parking Arrangements	Council Tax Band
Driveway	Band D
Garden	Year Built
Private Garden	2014
Heating Type	Eligibility Criteria
Gas	See Guidance notes for Eligibility Criteria
Energy Performance Rating	Closing Date
Not known	Return applications as soon as possible. Applications will be assessed on a first come basis.

The information in this schedule regarding the specific property has been supplied by the owner and whilst every care has been taken in the preparation of this schedule and the information is believed to be correct, it does not warrant or constitute any offer or contract.

*Factoring fees may be subject to change and may require an initial deposit. Please discuss with your solicitor if nominated.

Entrance Porch



Living Room



Kitchen



Dining Area of Kitchen



Downstairs Toilet



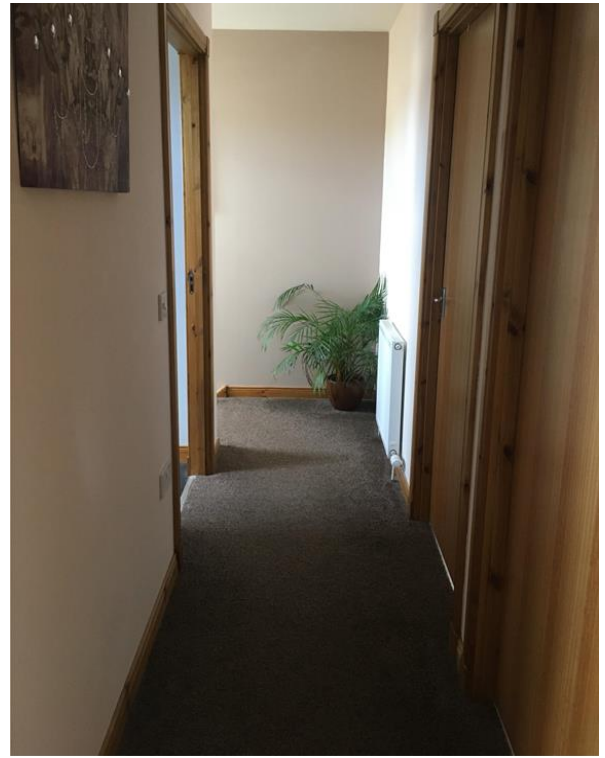
Upstairs Bathroom



Stairway



Upper Hallway



Bedroom 1



Bedroom 2



Bedroom 3



Alternative View of Bedroom 3



View of the Back of the House



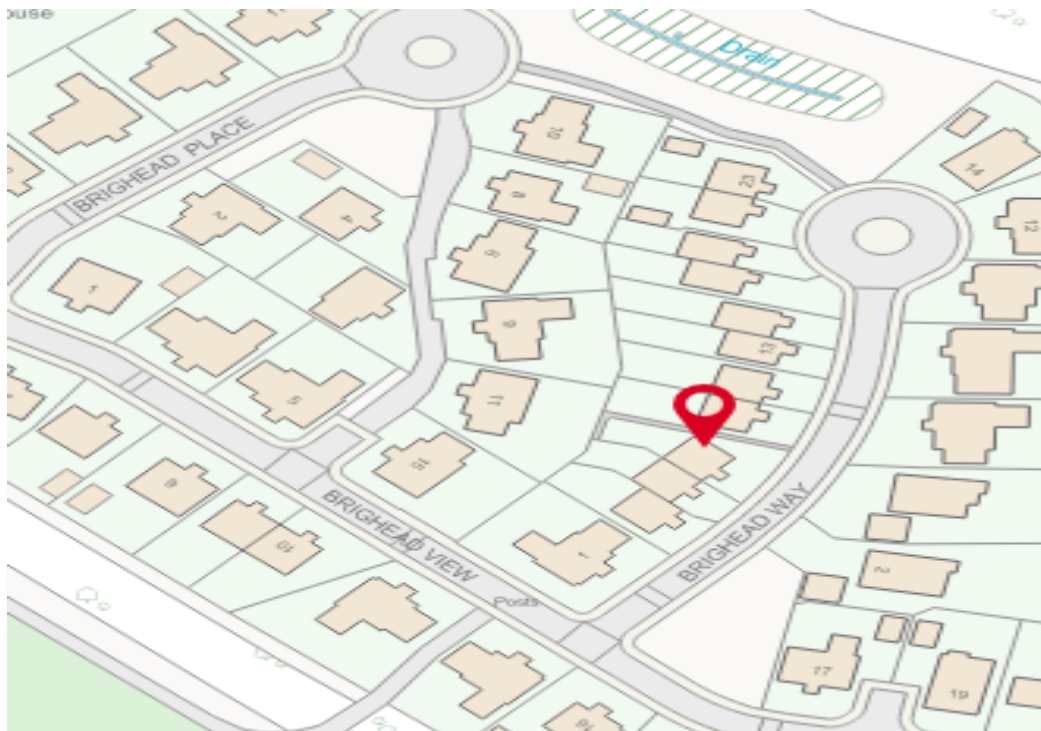
Back Garden



Location



Inverbervie is a peaceful coastal town approximately 13 miles North of Montrose and 10 miles south of Stonehaven placing it within easy commuting distance of Aberdeen. It has a good range of shops and benefits from all local amenities such as a primary school, medical centre and superb leisure facilities. Stonehaven also provides a wider selection of shops, services and leisure facilities.



Further Information

For further information please contact:

Development Officer - 01467 539457

LCHO@aberdeenshire.gov.uk