

From mountain to sea

Low Cost Shared Equity Property FOR SALE

68 King Street, Inverbervie, DD10 0RA

2 bed semi detached house

£115,608



Low Cost Shared Equity Property Schedule

Property Available	Property Available From
2 bed Semi Detached House	Property available now
Floor Space	Price
82m ²	£115,608
Accommodation	Income Threshold
Ground Floor: Hall, Shower Room, Lounge and Dining Kitchen including oven, hob and extractor fan. First Floor: 2 bedrooms with fitted wardrobes and a family bathroom	£43,000 or less
Heating Type	Factoring
Gas Central Heating	No factoring charges
Garden	Eligibility criteria
Exclusive drying area	See Guidance notes for Eligibility Criteria
Parking Arrangements	Closing Date
1 off street parking space	Applications should be returned as soon as possible. Applications will be assessed on a first come basis

The information in this schedule regarding the specific property has been supplied by the owner and whilst every care has been taken in the preparation of this schedule and the information is believed to be correct, it does not warrant or constitute any offer or contract.

*Factoring fees may be subject to change and may require an initial deposit. Please discuss with your solicitor if nominated.

Living Room



Alternative View of Living Room



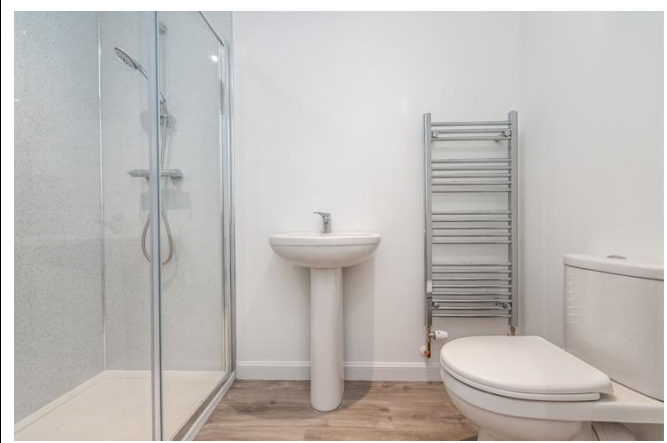
Kitchen



Kitchen Dining Area



Downstairs Shower Room



Hall and Stairs



Bedroom 1



Alternative View of Bedroom 1



Bedroom 2



Alternative view of Bedroom 2



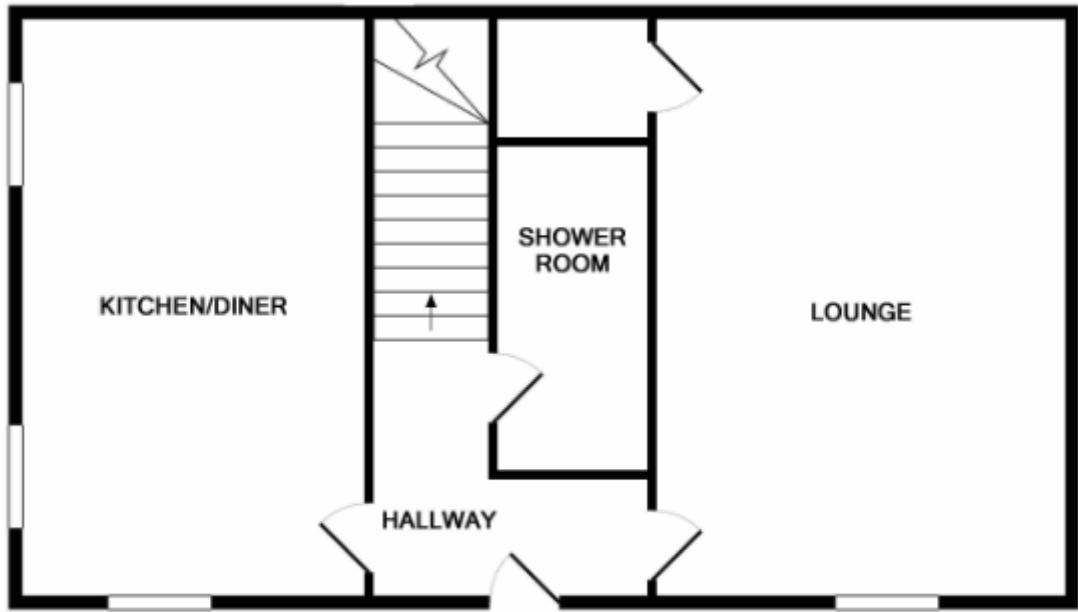
Bathroom



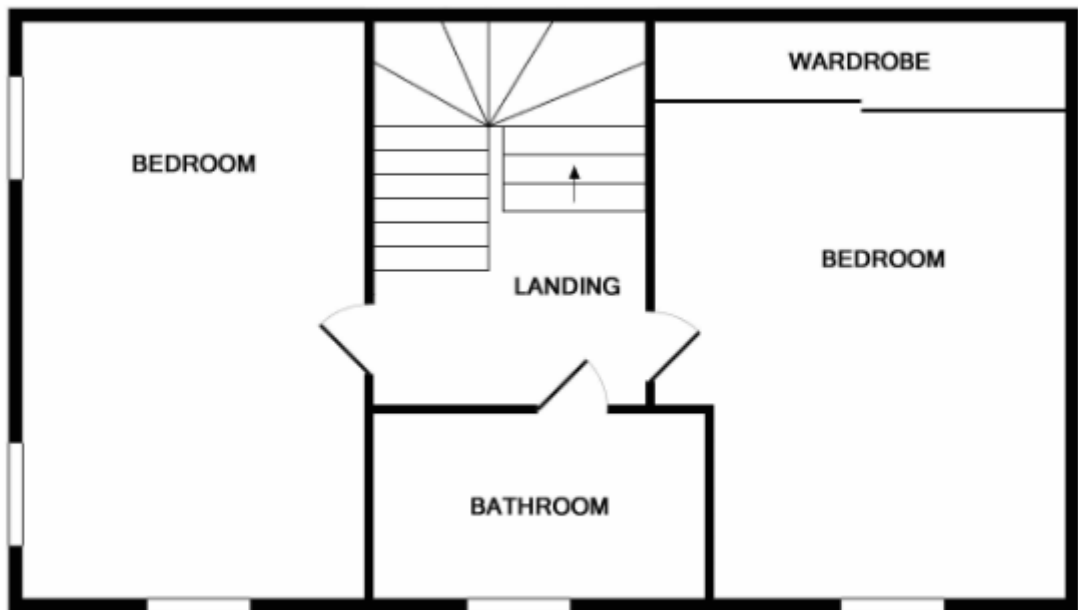
Alternative View of Bathroom



Floor Plans (For Illustrative Purposes only)



GROUND FLOOR



1ST FLOOR

Location



Inverbervie is a peaceful coastal town approximately 10 miles south of Stonehaven placing it within easy commuting distance of Aberdeen. It has a good range of shops and benefits from all local amenities such as a primary school, medical centre and superb leisure facilities. Stonehaven also provides a wider selection of shops, services and leisure facilities.



Further Information

For further information please contact:

Development Officer - 01467 534685

LCHO@aberdeenshire.gov.uk