

From mountain to sea

# Low Cost Shared Equity Property FOR SALE

**26 Braehead Drive, Stonehaven**

**3 Bed Semi Detached House**

**£117,000**



## Low Cost Shared Equity Property Schedule

Description	Price
3 bed semi-detached house	£117,000
Floor Space	Income Threshold
79m <sup>2</sup>	£43,000
Included in Sale	Factoring Charge
Curtains / blinds will all be left	*service charge of £16.24 a month to cover keeping the grounds tidy
Parking Arrangements	Council Tax Band
Driveway	Band E
Garden	Year Built
Large private garden	2009
Heating Type	Eligibility Criteria
Gas central heating	See Guidance notes for Eligibility Criteria
Energy Performance Rating	Closing Date
Not known	Return applications as soon as possible. Applications will be assessed on a first come basis.

The information in this schedule regarding the specific property has been supplied by the owner and whilst every care has been taken in the preparation of this schedule and the information is believed to be correct, it does not warrant or constitute any offer or contract.

\*Factoring fees may be subject to change and may require an initial deposit. Please discuss with your solicitor if nominated.

Living Room



Alternative View of Living Room



Kitchen



Dining Area of Kitchen

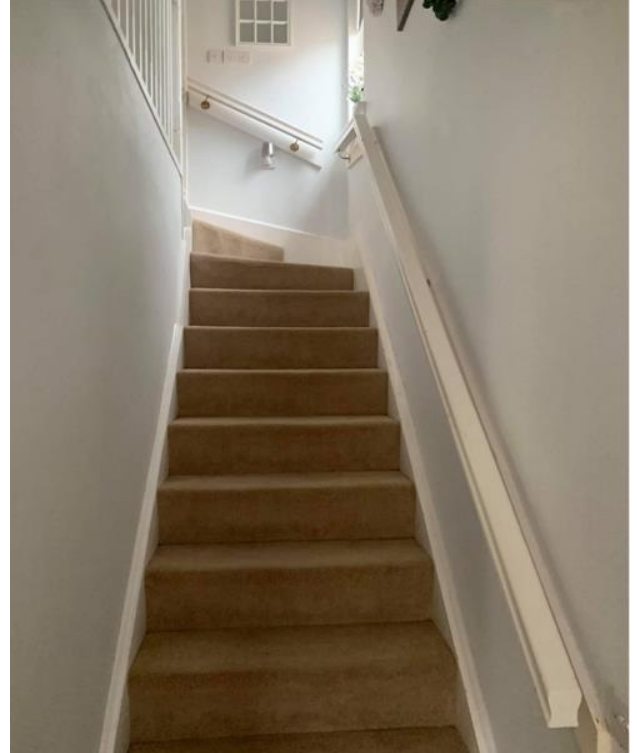




Downstairs Toilet



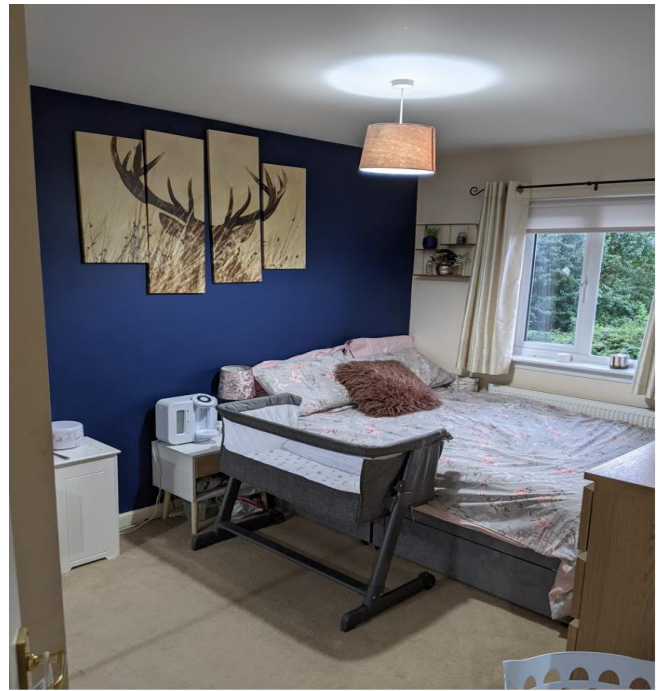
Hallway



Bathroom



Bedroom 1



**Bedroom 2**



**Alternative View of Bedroom 2**



**Back Garden**





## Location



Stonehaven lies 15 miles south of Aberdeen, with excellent road and rail links including the recently completed Aberdeen Western Peripheral Route (AWPR) offering easy access to North of Aberdeen.

Stonehaven is a vibrant community comprising the Old Town, picturesque harbour and the new town.

A range of facilities and services are on offer, with excellent shops, hotels, restaurants, primary and secondary schooling and a medical centre, further leisure activities include the seasonal open air swimming pool.



## Further Information

For further information please contact:

Development Officer - 01467 539457

[LCHO@aberdeenshire.gov.uk](mailto:LCHO@aberdeenshire.gov.uk)