

From mountain to sea

Low Cost Shared Equity Property FOR SALE

15 Ambleside Court, Banchory AB31 5NH

**1 bed 1st floor flat
£65,130**



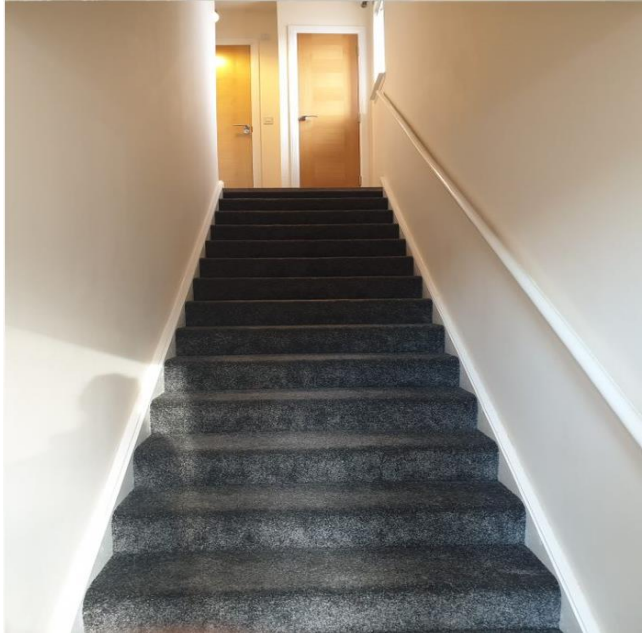
Low Cost Shared Equity Property Schedule

Description	Price
1 bed 1 st floor flat	£65,130
Floor Space	Income Threshold
57m ²	£26,000 or less
Included in Sale	Factoring Charge
Gas hob, electric built in oven and curtains	*James Gibb Building insurance, Management fee, Deeside Garden Services May to November £232.62 All costs for repairs to be shared between properties
Parking Arrangements	Council Tax Band
Dedicated parking space as well as visitor parking spaces	Band B
Garden	Year Built
Shared garden	2015
Heating Type	Eligibility Criteria
Gas heating Solar panels are linked up to heat the water.	See Guidance Notes for Eligibility Criteria
Energy Performance Rating	Closing Date
Band B	Return applications as soon as possible. Applications will be assessed on a first come basis.

The information in this schedule regarding the specific property has been supplied by the owner and whilst every care has been taken in the preparation of this schedule and the information is believed to be correct, it does not warrant or constitute any offer or contract.

*Factoring fees may be subject to change and may require an initial deposit. Please discuss with your solicitor if nominated.

Entrance Stairway



Living Room, Dining and Kitchen areas



Living Room Area



Kitchen Area



Bedroom



Alternative view of Bedroom



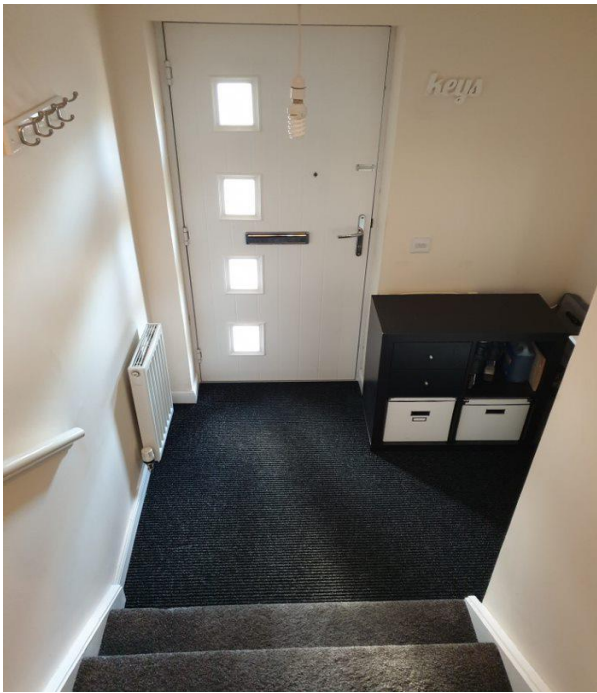
Bathroom



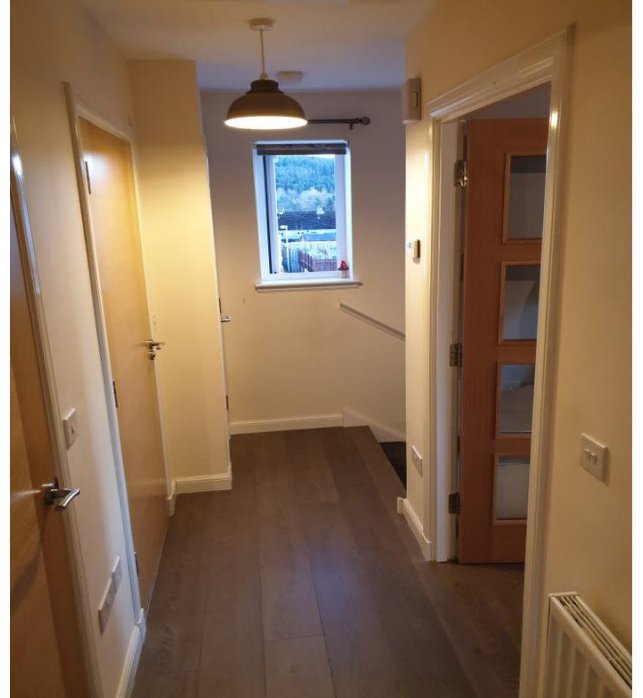
Alternative view of Bathroom



Entrance Hallway



Upper Hallway



Grounds



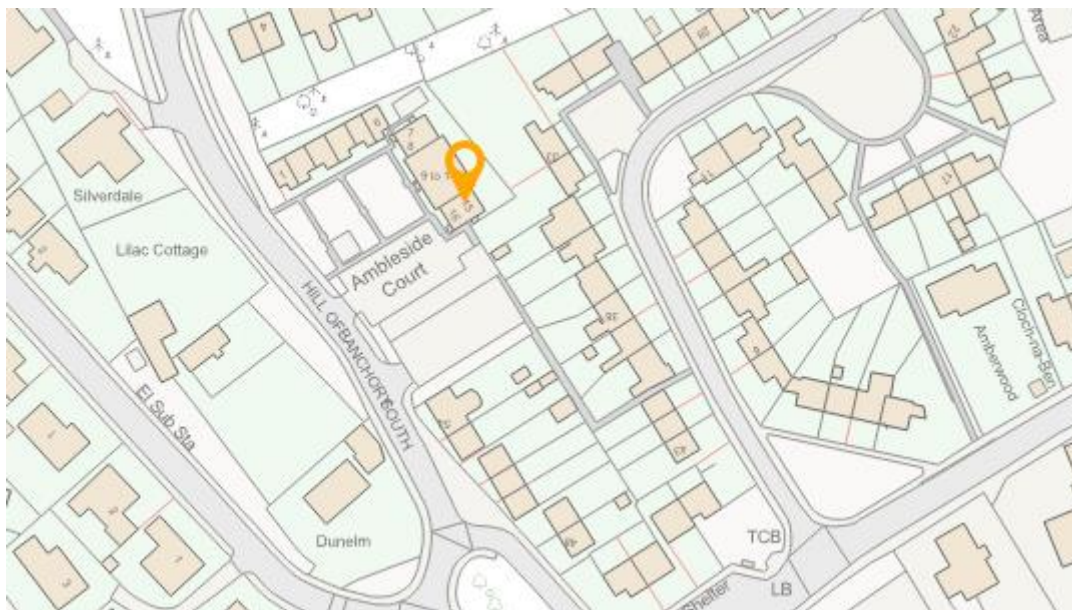
Car Parking Area



Location



Banchory is 18 miles approx. drive from the city of Aberdeen. The town has a wide range of shops and several hotels and restaurants. There are primary and secondary schools and a new Banchory Sports Village. Banchory has two golf courses and a driving range. There are other leisure pursuits available on Deeside such as fishing, riding, hill walking and skiing etc.



Further Information

For further information please contact:

Development Officer - 01467 539457

LCHO@aberdeenshire.gov.uk