

From mountain to sea

# Low Cost Shared Equity Property FOR SALE

**5 St Andrews Terrace, Monymusk**

**3 bed end terrace house**

**£125,400**



## Low Cost Shared Equity Property Schedule

Description	Price
3 bed end terrace house	£125,400
Floor Space	Income Threshold
Not known	£46,000 Or less
Included in Sale	Factoring Charge
Curtains and light fittings	*Owners carry out maintenance of the properties. Each pay £45 per year.
Parking Arrangements	Council Tax Band
2 dedicated spaces in car park plus on street parking	Band D
Garden	Year Built
Private Garden	2013
Heating Type	Eligibility Criteria
Oil central heating	See Guidance Notes for Eligibility Criteria
Energy Performance Rating	Closing Date
Not known	Return applications as soon as possible. Applications will be assessed on a first come basis.

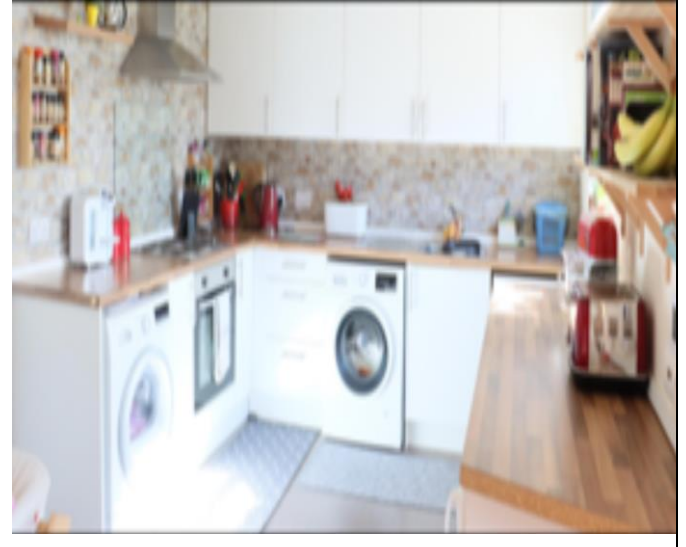
The information in this schedule regarding the specific property has been supplied by the owner and whilst every care has been taken in the preparation of this schedule and the information is believed to be correct, it does not warrant or constitute any offer or contract.

\*Factoring fees may be subject to change and may require an initial deposit. Please discuss with your solicitor if nominated.

Living Room



Kitchen



Dining Area



Stairway

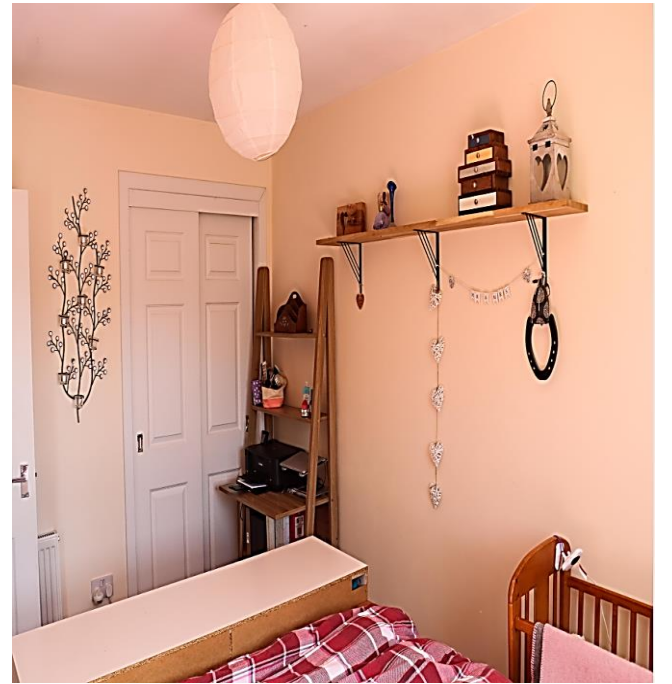




Bedroom 1



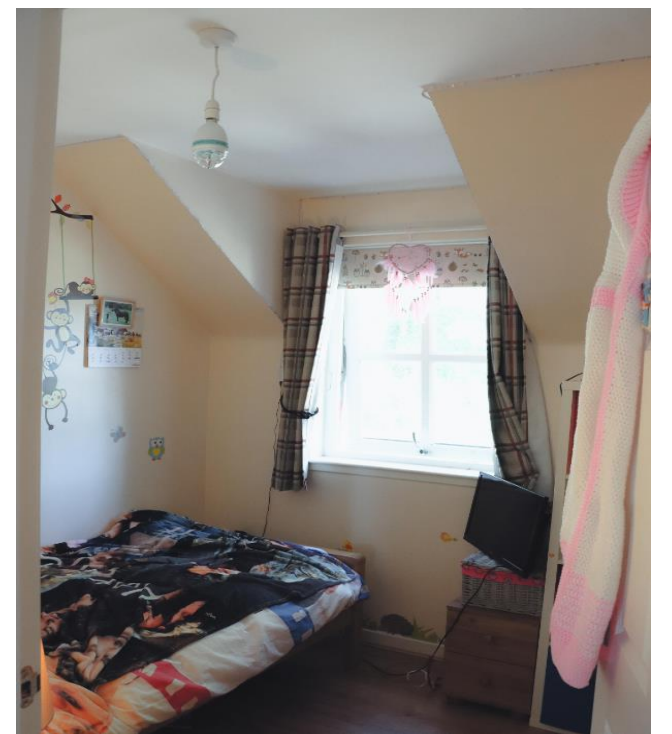
Alternative View of Bedroom 1



Bedroom 2



Bedroom 3



**Bathroom**



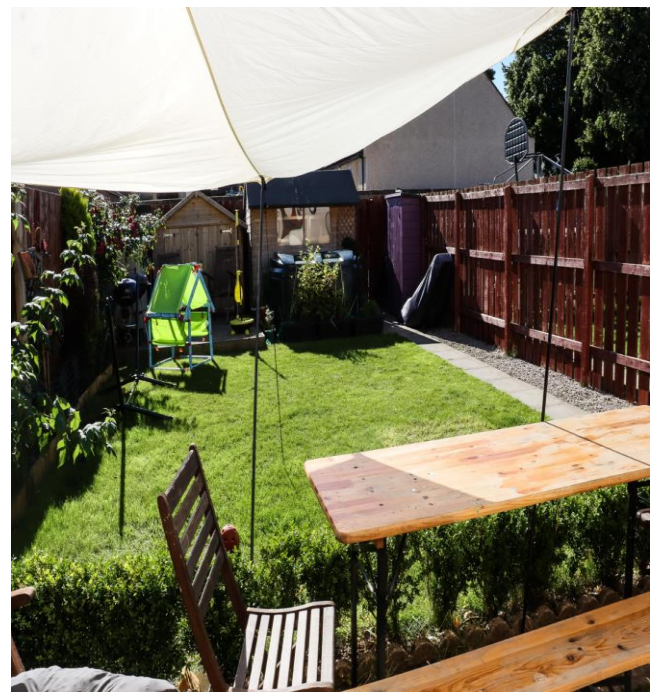
**Top Hallway**



**View of the back of the house**



**Back Garden**

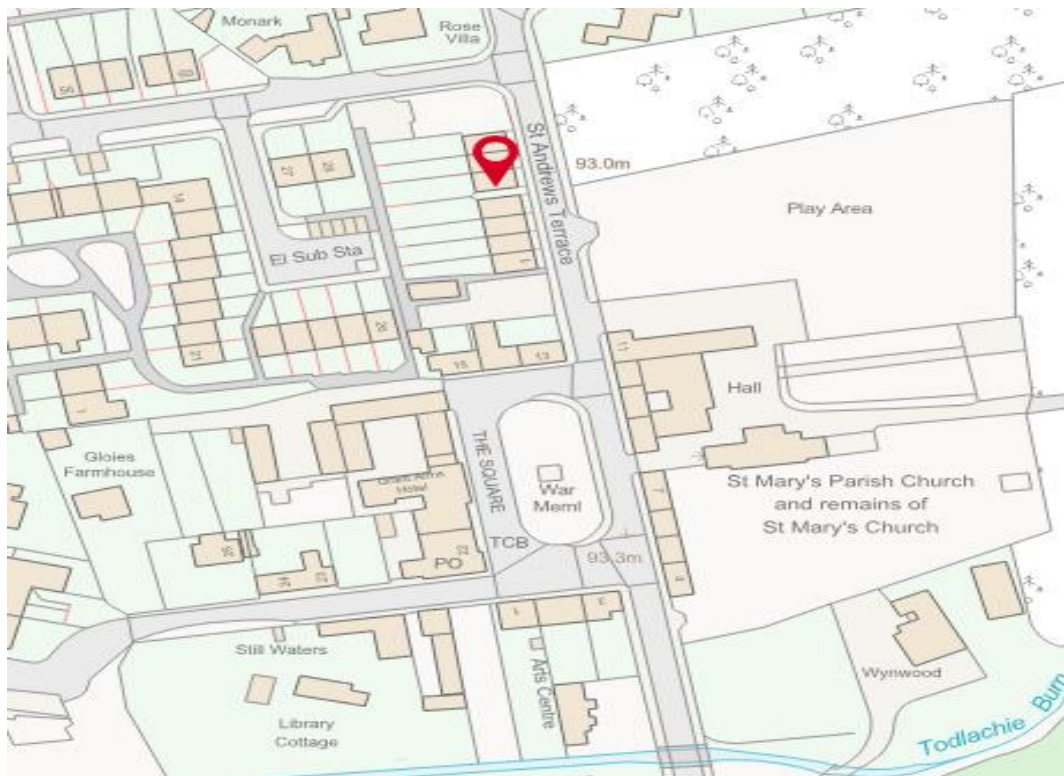




## Location



Monymusk is a charming village 9 miles from Inverurie and a similar distance from Alford. Aberdeen and the International Airport are within commuting distance and are easily accessible. There is a primary school, a post office and store, restaurant, a picturesque church, a children's play park, an active community hall and a choice of outdoor pursuits and scenic walks nearby.



## Further Information

For further information please contact:

Development Officer - 01467 539457

[LCHO@aberdeenshire.gov.uk](mailto:LCHO@aberdeenshire.gov.uk)