

From mountain to sea

Low Cost Shared Equity Property FOR SALE

5 Station Place, Hatton

3 bed semi-detached house

£110,400



Low Cost Shared Equity Property Schedule

Description	Price
3 bed semi-detached house	£110,400
Floor Space	Income Threshold
89m ²	£41,000
Included in Sale	Factoring Charge
Fitted washing machine, cooker and hob. Several light fittings. Fitted blinds and curtains in most rooms. Wall mounted tv in kitchen. Free standing fridge freezer. No guarantee offered with any of these items	<ul style="list-style-type: none"> None
Parking Arrangements	Council Tax Band
Private driveway	Not known
Garden	Year Built
Private gardens	2011
Heating Type	Eligibility Criteria
Gas central heating/combi boiler	See Guidance notes for Eligibility Criteria
Energy Performance Rating	Closing Date
Not known	Return applications as soon as possible. Applications will be assessed on a first come basis.

The information in this schedule regarding the specific property has been supplied by the owner and whilst every care has been taken in the preparation of this schedule and the information is believed to be correct, it does not warrant or constitute any offer or contract.

*Factoring fees may be subject to change and may require an initial deposit. Please discuss with your solicitor if nominated.

Front of Property



Back Garden



Living Room



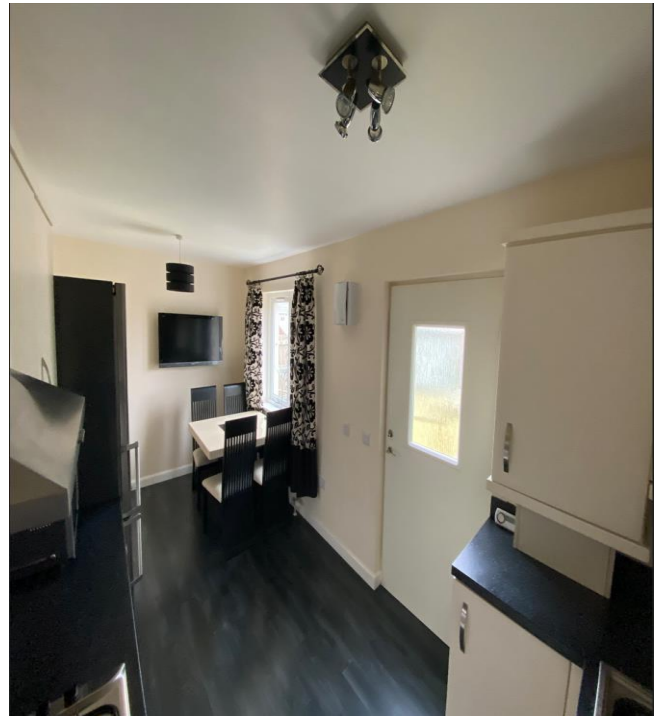
Downstairs Shower Room



Kitchen & Dining Area



Alternative View of Kitchen & Dining Area



Downstairs Hallway



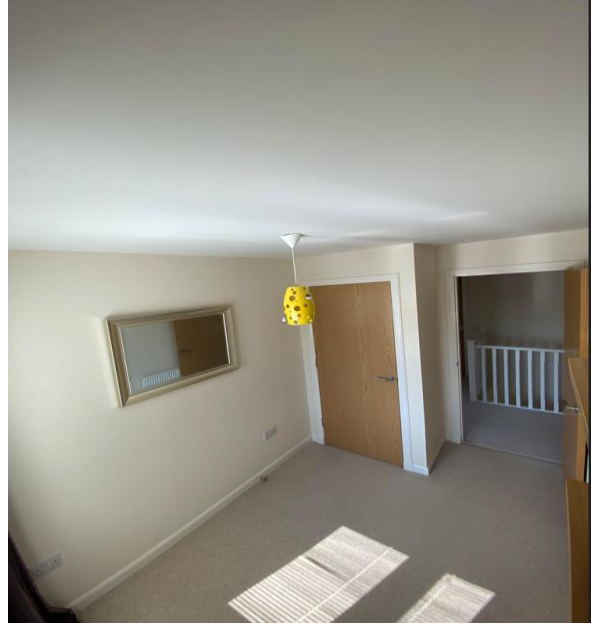
Alternative View of Downstairs Hallway



Master Bedroom



Bedroom 3



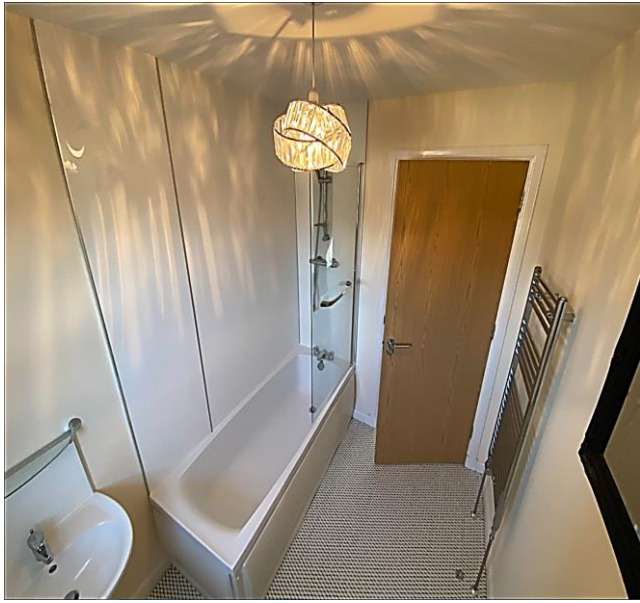
Bedroom 2



Alternative View of Bedroom 2



Upstairs Bathroom



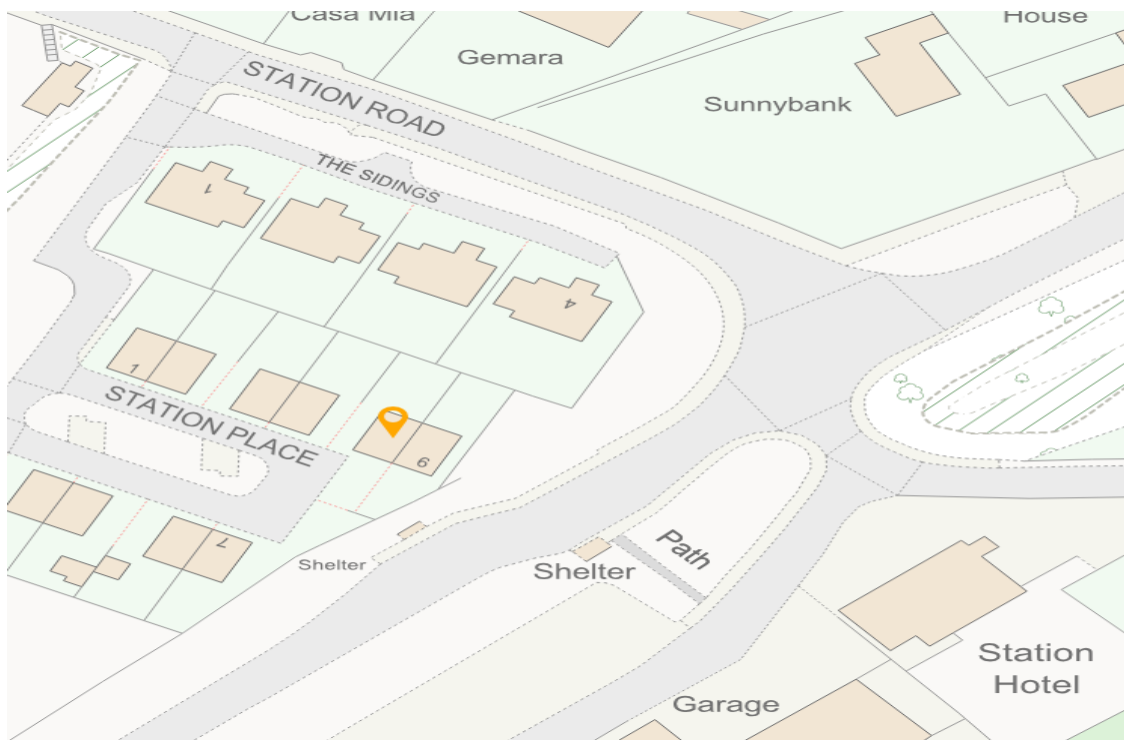
Upstairs Hallway



Location



Hatton is a small Village within easy commuting distance of Aberdeen, Dyce and Peterhead and approximately a 10 minute drive from Ellon. There is a local shop, post office, doctors' surgery and primary school. A public hall next to the primary school offers a wide range of activities for all ages.



Further Information

For further information please contact:

Development Officer - 01467 539457

LCHO@aberdeenshire.gov.uk