

Settlement Summary: Balmedie

Population: 1909

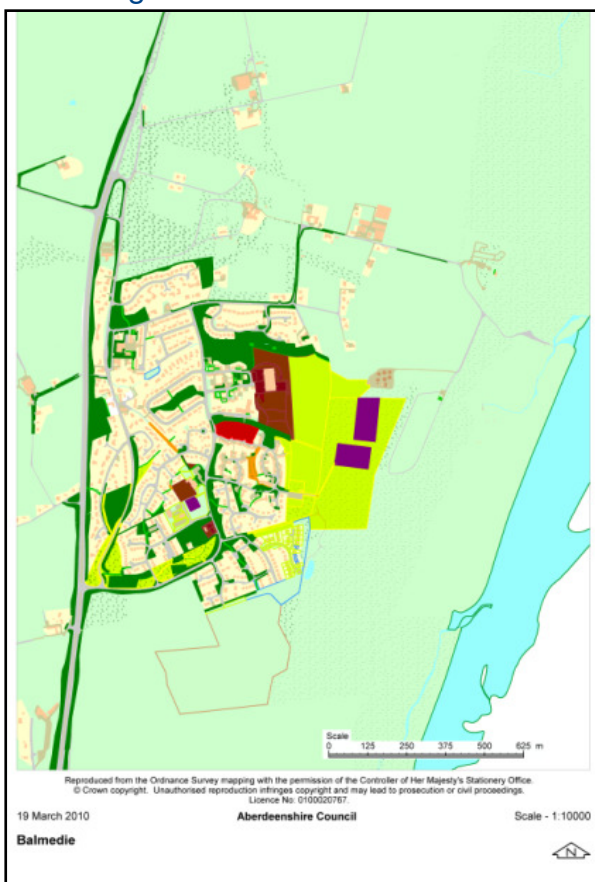
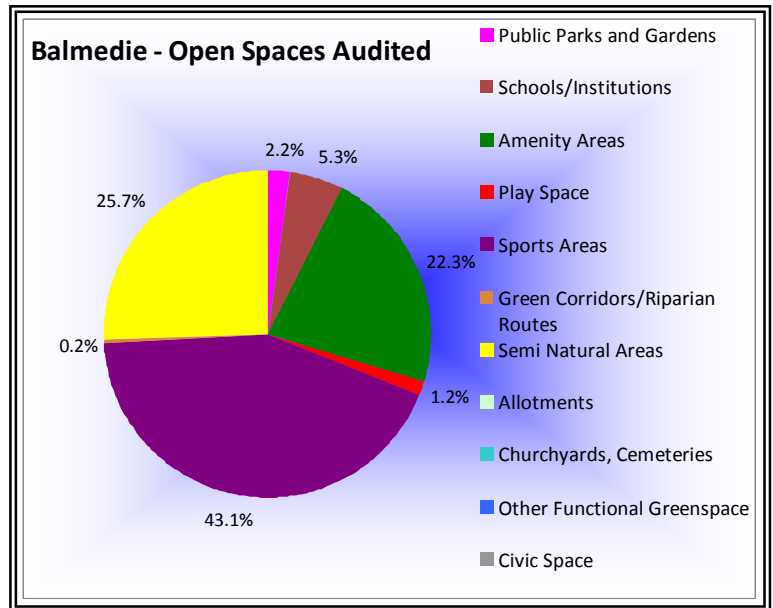
Observations (of Community Council)

The Community Council submitted comments in respect of the following local woodlands:

- Lumsden Way: improve paths to north of woodland (not in Council ownership)
- Beachfield Woods: woodland management needed, and footpath link from Old Aberdeen Road to Keith Avenue. Ground would need to be acquired from homeowners on Keith Avenue to make this possible.

Other improvements suggested:

- Oldmill Cresent amenity space: picnic bench and dog bins
- Football pitch near beach: create off-road cycle track
- Eigie Road park: clear weeds from banks of Eigie burn and rubbish from burn; maintain path through to beach



Green Network Links

A footpath is needed between Old Aberdeen Road and Keith Avenue, as well as a path through to the beach along the Eigie Burn.

Open Space Requirements

Taking into account both the findings of the audit and feedback from the community, woodland management and path creation appear to be significant issues in Balmedie.

In addition to these key issues, enhanced facilities could make Oldmill Cresent amenity space more useable to residents, and a cycle track in the football pitch areas would improve options for young people.

Vegetation around the Eigie Burn, and indeed along smaller watercourses throughout Aberdeenshire, is left unmanaged to encourage wild flower growth and promote biodiversity.

- | | | |
|-----------------------------|----------------------|---------------------------------|
| Public Parks and Gardens | Schools/Institutions | Amenity Areas |
| Play Space | Sports Areas | Green Corridors/Riparian Routes |
| Semi Natural Areas | Allotments | Churchyards, Cemeteries |
| Other Functional Greenspace | | |

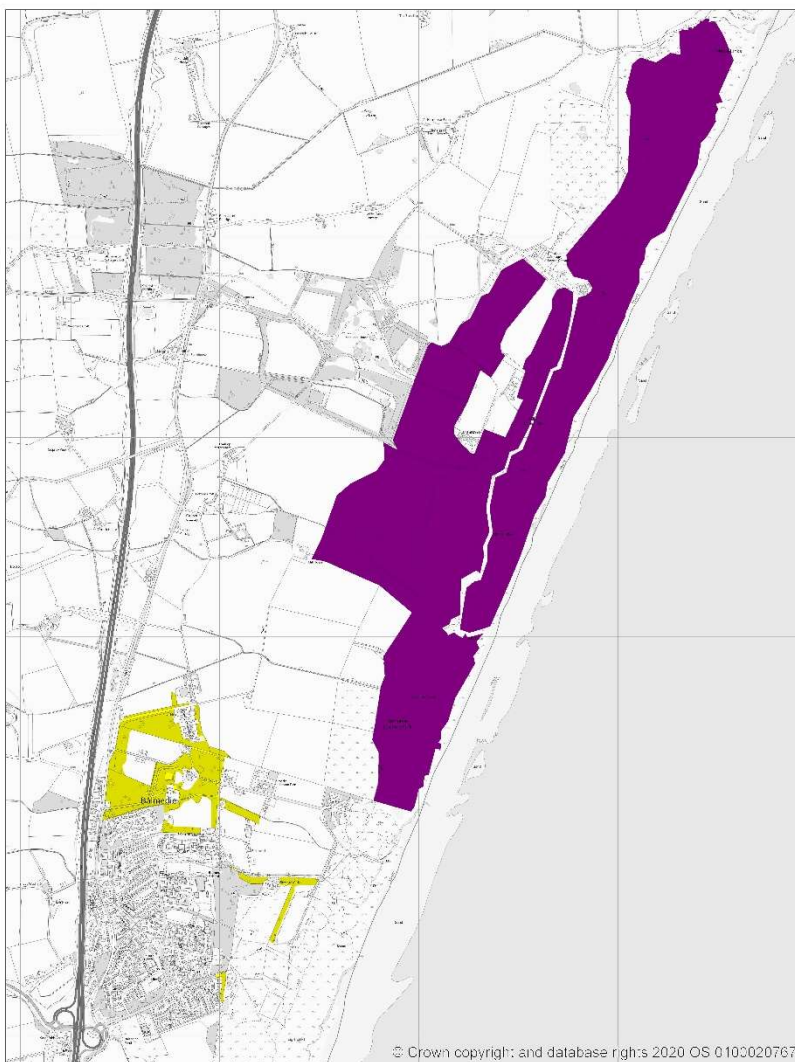
Open Space Audit Update 2019: Balmedie

An update exercise was carried out in 2019 to account for new open spaces arising from major developments completed since the Open Space Audit 2010, and to address any known disparities/gaps in information. The scope of the update exercise did not include a review of the Open Space Audit 2010. The Audit update 2019 has been used to assist in the preparation of the Proposed Aberdeenshire Local Development Plan 2020.

This is an interim Audit.

Whilst this information will feed into a future comprehensive Open Space Audit, at this stage there may be some auditing inconsistencies across settlements due to factors such as community interest, and landscape/topography influencing how open spaces are identified, particularly at and around the edges of settlement.

Allotments are excluded as these are audited separately as part of the Food Growing Strategy 2019-2030.



500 m
700 yd



- Public Parks and Gardens
- Play Space
- Semi Natural Areas
- Other Functional Greenspace

- Schools/Institutions
- Sports Areas
- Allotments

- Amenity Areas
- Green Corridors/Riparian Routes
- Churchyards, Cemeteries