

Settlement Summary: Auchenblae

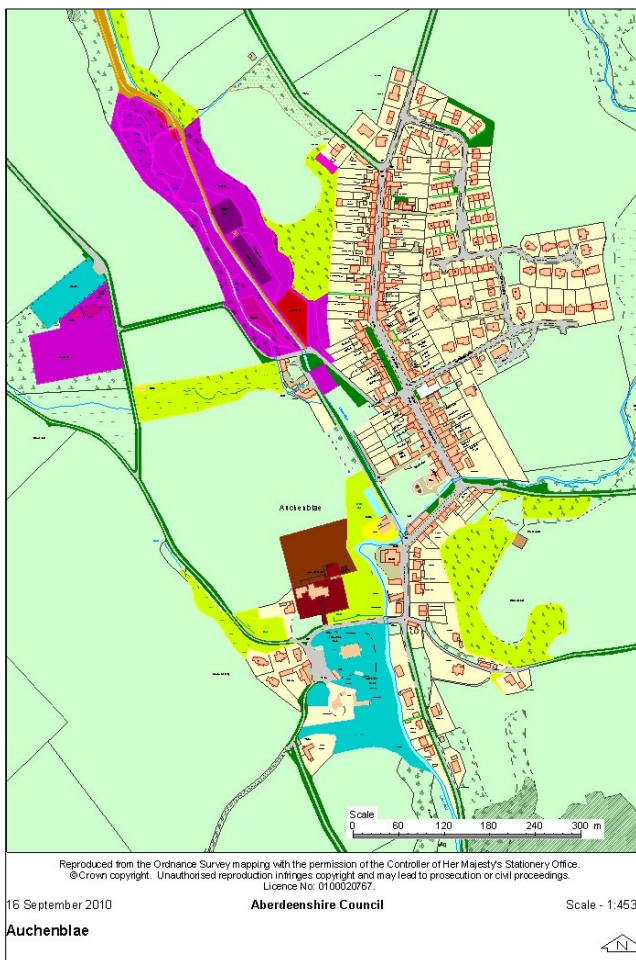
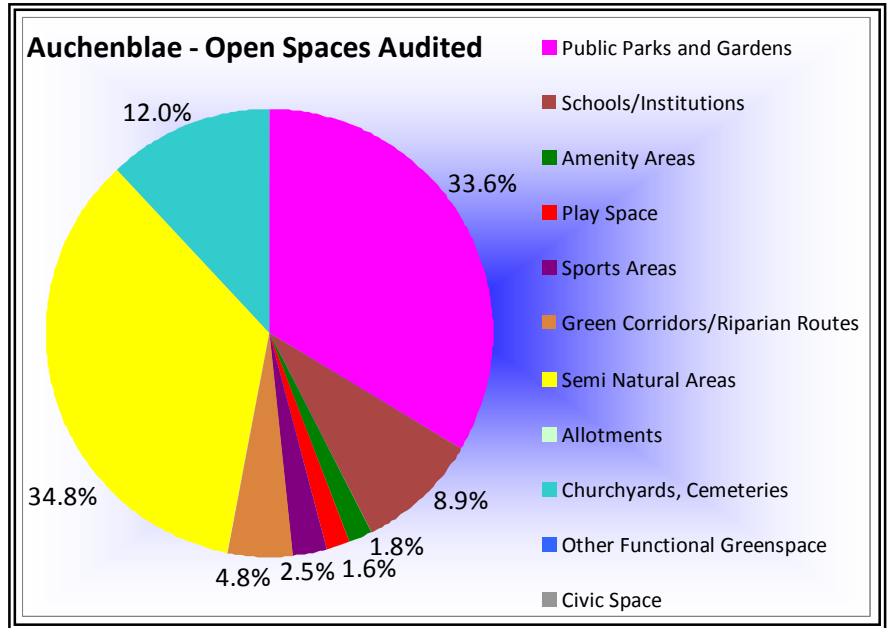
Population: 528

Observations (of Community Council)

The Community Council confirmed that Auchenblae Parks Woodland is managed by the Parks Committee, but receives no external funding. Some concerns were raised regarding overgrowing vegetation at the graveyard.

Green Network Links

As Auchenblae is a small linear settlement, the surrounding countryside is reasonably accessible to most of the village. However, in the event of new development occurring, it will be important to retain green corridors to the surrounding area.



Open Space Requirements

The main requirements to emerge for Auchenblae relate to the creation and maintenance of paths/facilities in local woodlands. In the event of minor development within the village, it may be appropriate to consider the impact of additional use in the woods, and with this, some contribution to the creation of paths.

At Monboddoo Woods, there may be a case for considering the installation of facilities for teenagers; however, this would need to be subject of further consultation with local residents. Similarly, path improvement works at Auchenblae Parks Woodland may benefit from assistance with funding, and there is potential for provision of a path in woods at Auchenblae Church.

Further review of the maintenance regime in the village may identify opportunities for positive enhancements for biodiversity, such as at Glenfarquhar Crescent, where there may also be scope for allotments.

Suggested maintenance improvement include fence repair and clearing of vegetation at the Church.

- | | | |
|-----------------------------|----------------------|---------------------------------|
| Public Parks and Gardens | Schools/Institutions | Amenity Areas |
| Play Space | Sports Areas | Green Corridors/Riparian Routes |
| Semi Natural Areas | Allotments | Churchyards, Cemeteries |
| Other Functional Greenspace | | |

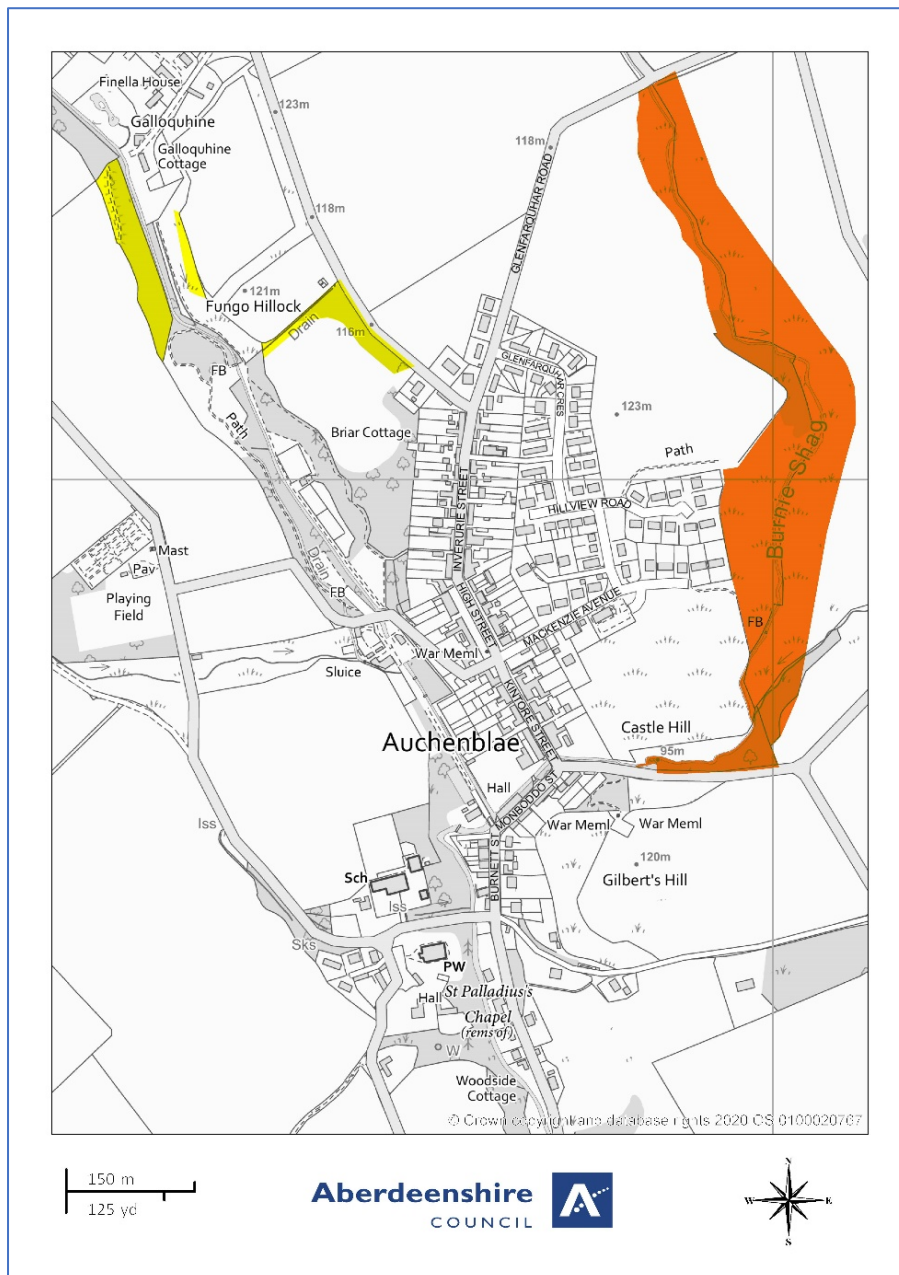
Open Space Audit Update 2019: Auchenblae

An update exercise was carried out in 2019 to account for new open spaces arising from major developments completed since the Open Space Audit 2010, and to address any known disparities/gaps in information. The scope of the update exercise did not include a review of the Open Space Audit 2010. The Audit update 2019 has been used to assist in the preparation of the Proposed Aberdeenshire Local Development Plan 2020.

This is an interim Audit.

Whilst this information will feed into a future comprehensive Open Space Audit, at this stage there may be some auditing inconsistencies across settlements due to factors such as community interest, and landscape/topography influencing how open spaces are identified, particularly at and around the edges of settlement.

Allotments are excluded as these are audited separately as part of the Food Growing Strategy 2019-2030.



- | | | |
|---|---|---|
| ■ Public Parks and Gardens | ■ Schools/Institutions | ■ Amenity Areas |
| ■ Play Space | ■ Sports Areas | ■ Green Corridors/Riparian Routes |
| ■ Semi Natural Areas | ■ Allotments | ■ Churchyards, Cemeteries |
| ■ Other Functional Greenspace | | |