

Settlement Summary: Ellon

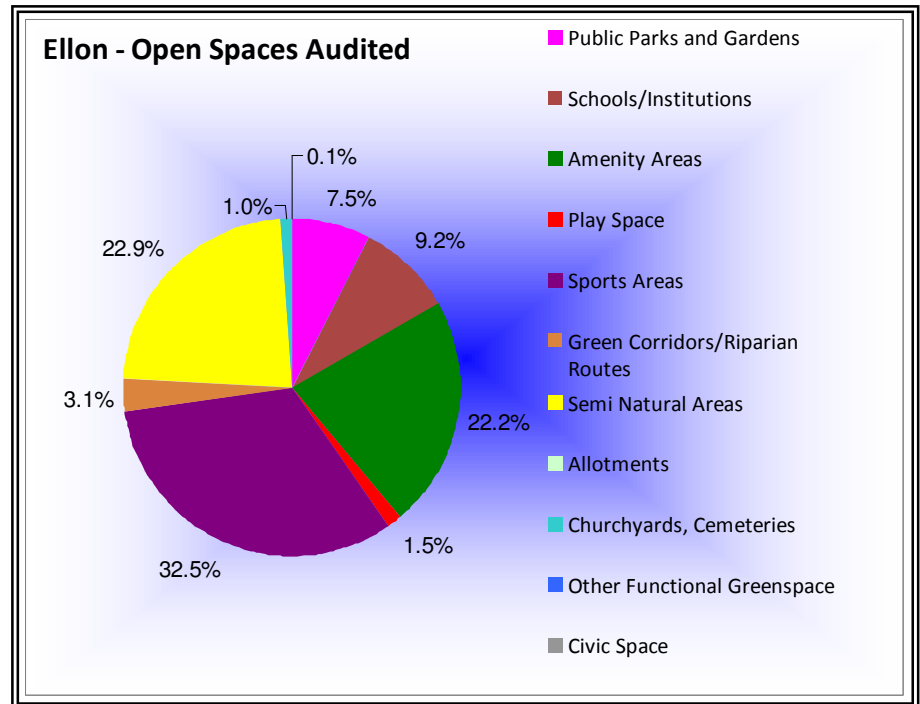
Population: 9465

Observations (of Community Council)

None received.

Green Network Links

Overall, Ellon appears to have a good spread of greenspace, which is reasonably well linked. Evidence of linkages between spaces is weaker towards the west of the town, where some green areas are isolated from others; there may be potential in this area to enhance biodiversity both of individual sites and the neighbourhood. As tarred paths link most areas in Ellon, it would be beneficial to enhance biodiversity where possible along the routes eg: railway line, riverside park.



In recent years, alternative routes have been provided, where practical, to maintain access to the riverside path network during periods of flooding.

Open Space Requirements

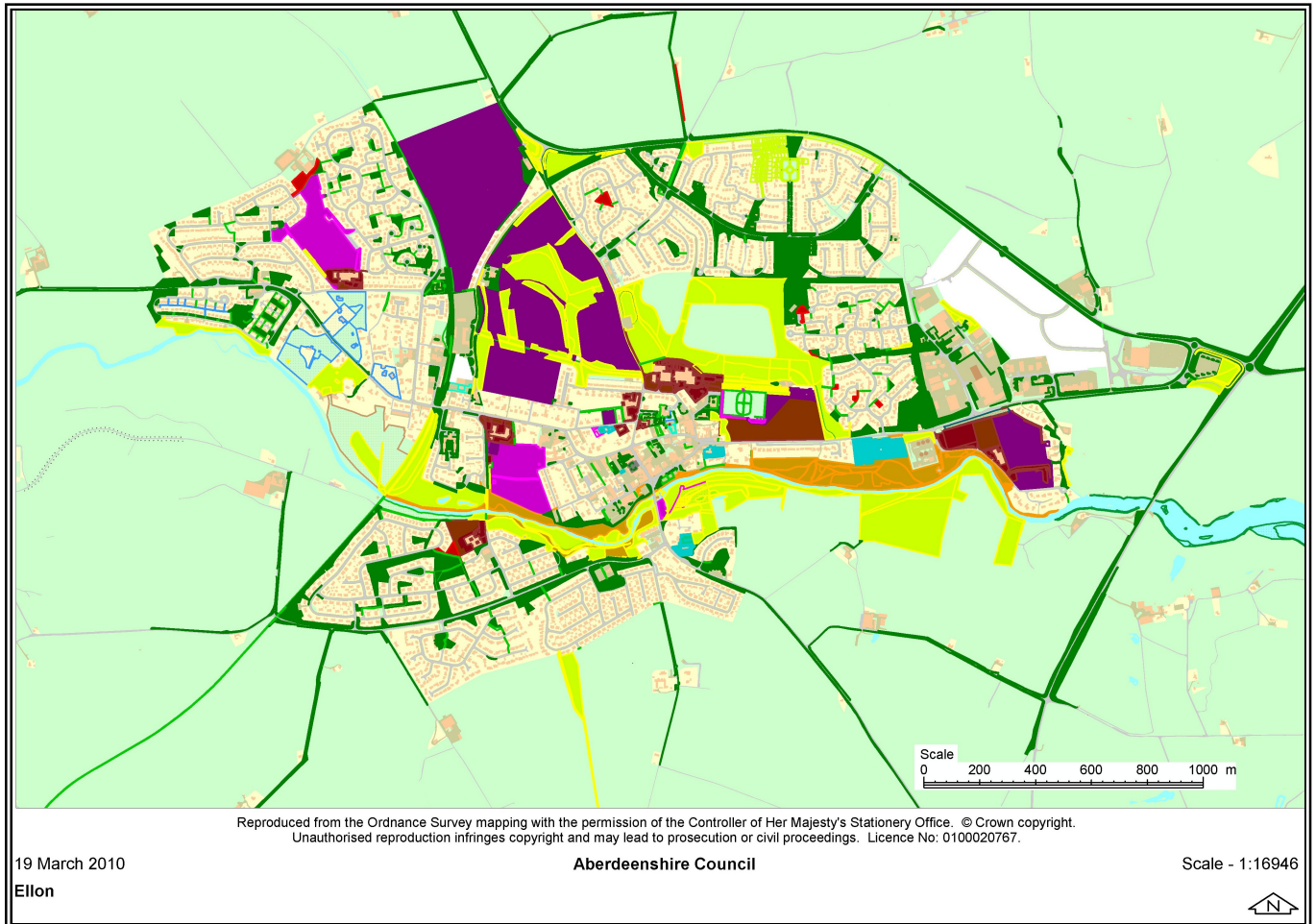
Ellon is served by a wide range of open space types, fairly well distributed across the community. There is a particularly high proportion of sports facilities (at 32%), compared to the Shire's average of just under 13%, however this figure includes a large golf course within the town. The audit has highlighted those sites which may benefit from further input, or where there may be potential for a change of use.

For example, the 'back field' (off Craig Park Place) was observed as well used, but with graffiti and evidence of anti-social behaviour; it may be worth considering a possible change of use to allotments at this site. At Castlepark Community Park, the addition of benches would extend access to a wider range of users and age groups.

With regard to semi natural areas, auditors suggested that the unmanaged grassland adjoining the health centre, and the woodland behind the telephone exchange, offered potential for additional parking for the health centre. This would be matter for further consideration with the NHS and others. Litter clearance would improve the amenity of Ellon Woods.

The community of Ellon benefits from the contributions from a number of community groups interested in different aspects of greenspace, who work to identify any issues, liaise with the local authority, and improve and maintain the open spaces of the town.

In this respect, both Balmacassie and MacDonald Park have benefited from funding under the Woodlands In and Around Towns (WIAT) scheme, funded jointly by the Forestry Commission and the Local Authority. The continued implementation of management plans in these areas calls for ongoing liaison between the various Services within the Local Authority, as well as the input of the local community.



- Public Parks and Gardens
- Play Space
- Semi Natural Areas
- Other Functional Greenspace

- Schools/Institutions
- Sports Areas
- Allotments

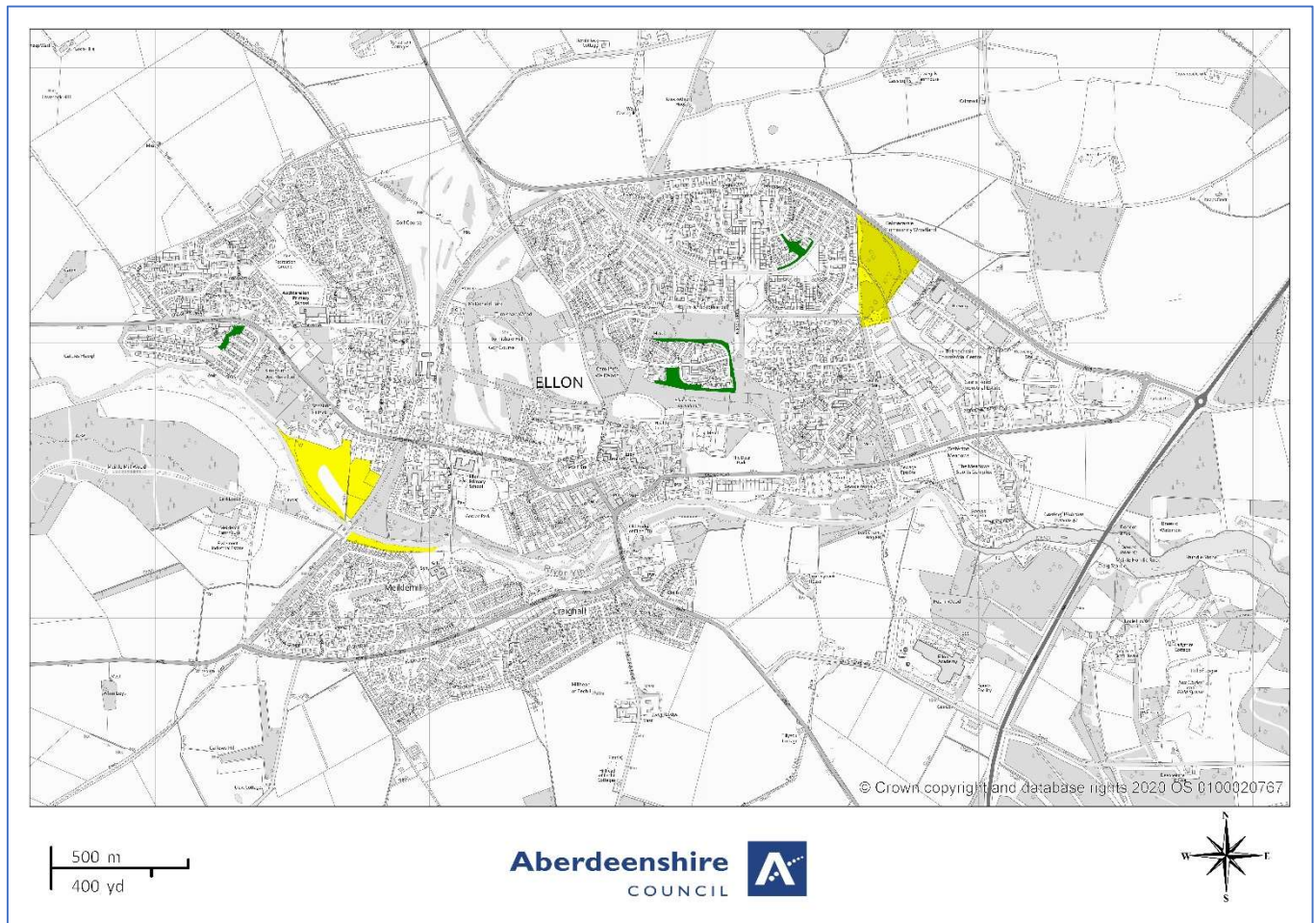
- Amenity Areas
- Green Corridors/Riparian Routes
- Churchyards, Cemeteries

Open Space Audit Update 2019: Ellon

An update exercise was carried out in 2019 to account for new open spaces arising from major developments completed since the Open Space Audit 2010, and to address any known disparities/gaps in information. The scope of the update exercise did not include a review of the Open Space Audit 2010. The Audit update 2019 has been used to assist in the preparation of the Proposed Aberdeenshire Local Development Plan 2020.

This is an interim Audit. Whilst this information will feed into a future comprehensive Open Space Audit, at this stage there may be some auditing inconsistencies across settlements due to factors such as community interest, and landscape/topography influencing how open spaces are identified, particularly at and around the edges of settlement.

Allotments are excluded as these are audited separately as part of the Food Growing Strategy 2019-2030.



- Public Parks and Gardens
- Play Space
- Semi Natural Areas
- Other Functional Greenspace

- Schools/Institutions
- Sports Areas
- Allotments

- Amenity Areas
- Green Corridors/Riparian Routes
- Churchyards, Cemeteries