

From mountain to sea

Low Cost Shared Equity FOR SALE

21 Wellington Drive, Peterhead AB42 3PN

2 bed semi-detached house
£115,950



Low Cost Shared Equity - Property Schedule

Description

2 bed semi-detached house

Floor Space

Not known

Included in Sale

Built in fridge, built in cooker/hob and flooring.

Parking Arrangements

Private drive.

Garden

Private garden.

Heating Type

Gas combi boiler.

Energy Performance Rating

Not known

Price

£115,950

Income Threshold

£43,000 or less.

Factoring Charge

Approx £100 per annum for maintenance of estate.

Council Tax Band

Band C

Year Built

2015

Eligibility Criteria

See Guidance Notes for Eligibility Criteria.

Closing Date

Return applications as soon as possible. Applications will be assessed on a first come basis.

Disclaimer

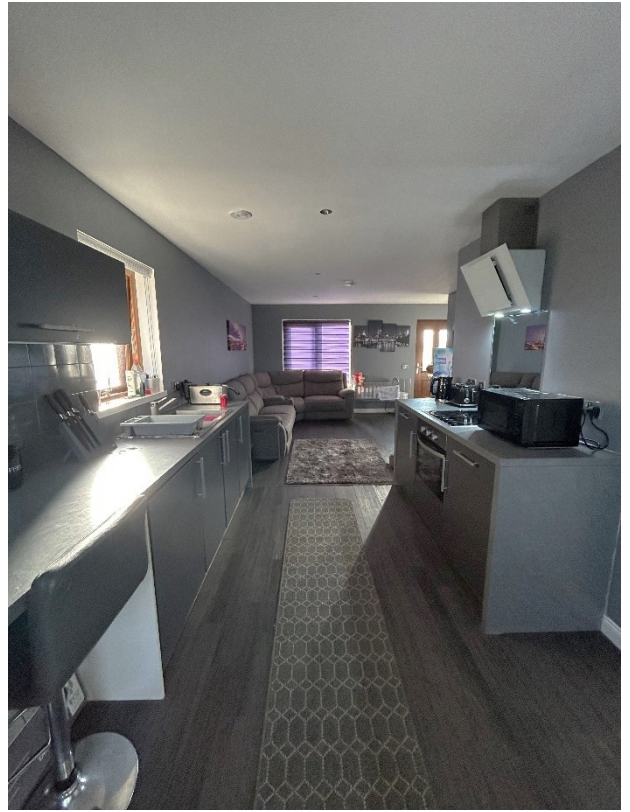
The information in this schedule regarding the specific property has been supplied by the owner and whilst every care has been taken in the preparation of this schedule and the information is believed to be correct, it does not warrant or constitute any offer or contract.

*Factoring fees may be subject to change and may require an initial deposit. Please discuss with your solicitor if nominated.

Living Room / Kitchen Area



Kitchen / Living Room Area



Living Room Area



Kitchen Area



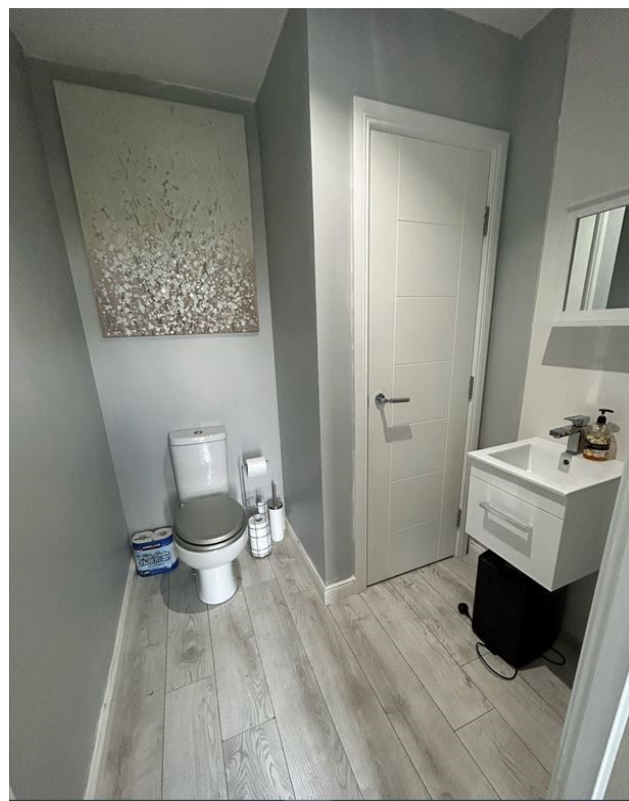
Alternative View of Kitchen Area



Utility Room



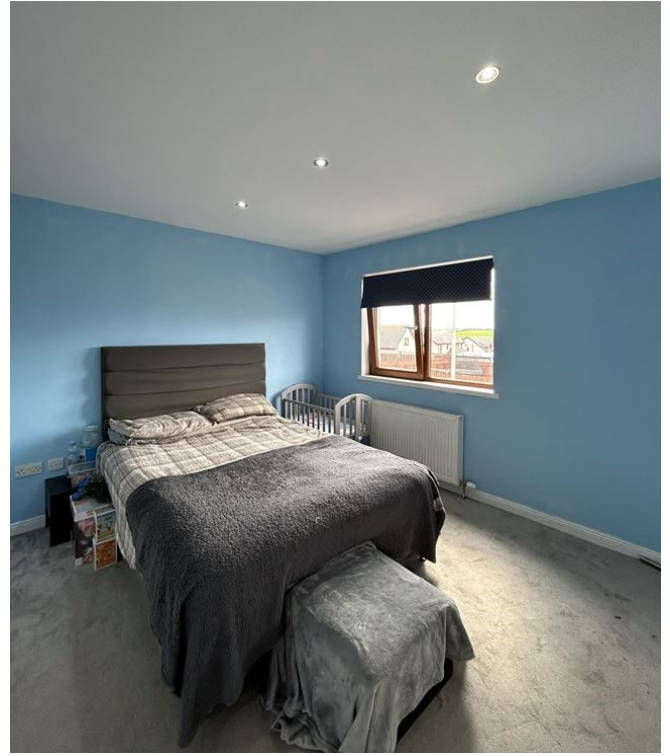
Downstairs Toilet



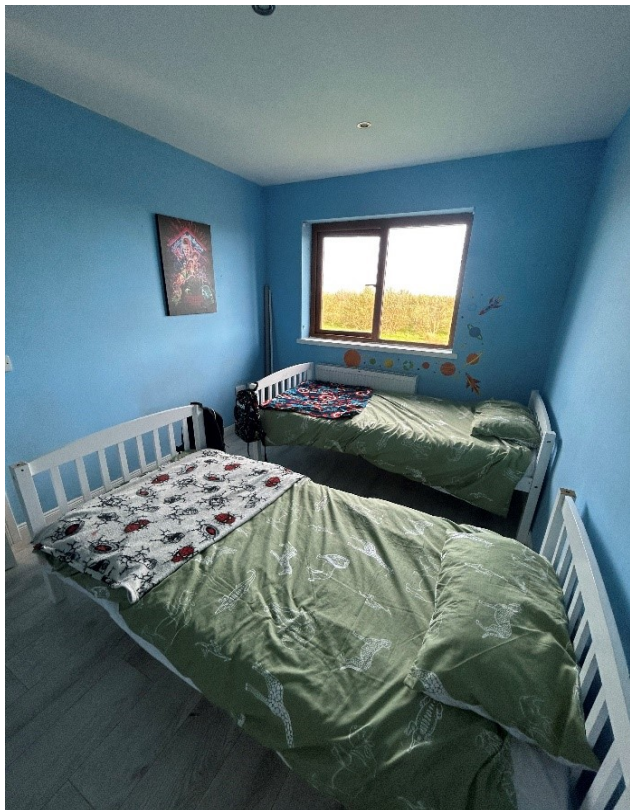
Bedroom 1



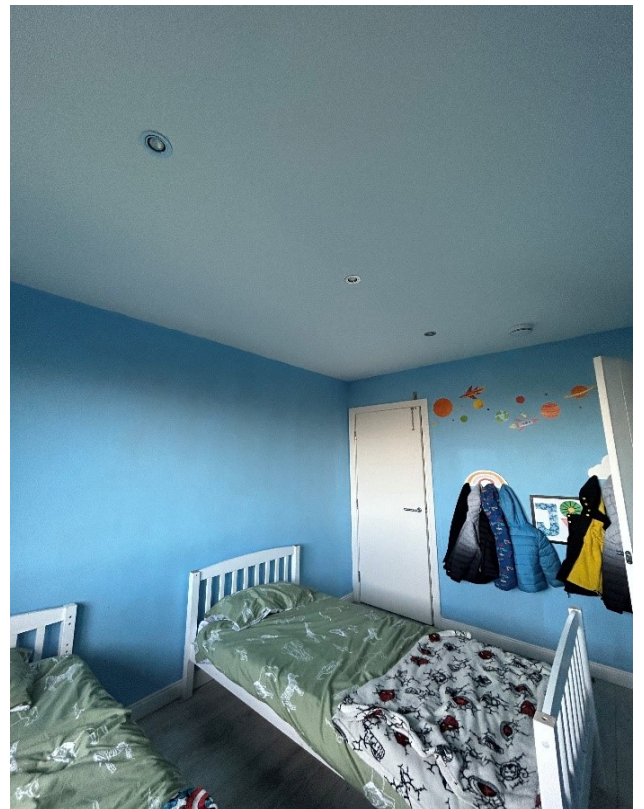
Alternative View of Bedroom 1



Bedroom 2



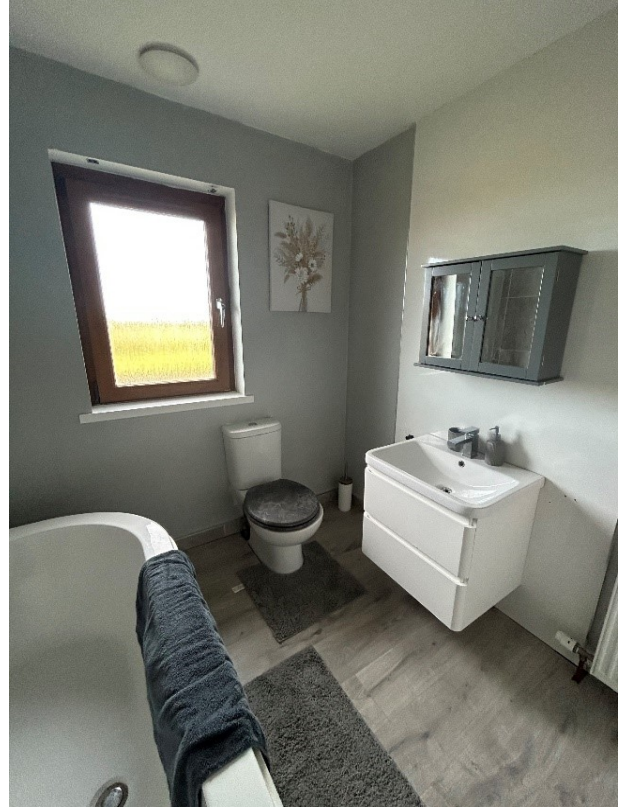
Alternative View of Bedroom 2



Bathroom



Alternative View of Bathroom



Stairway



Back Garden



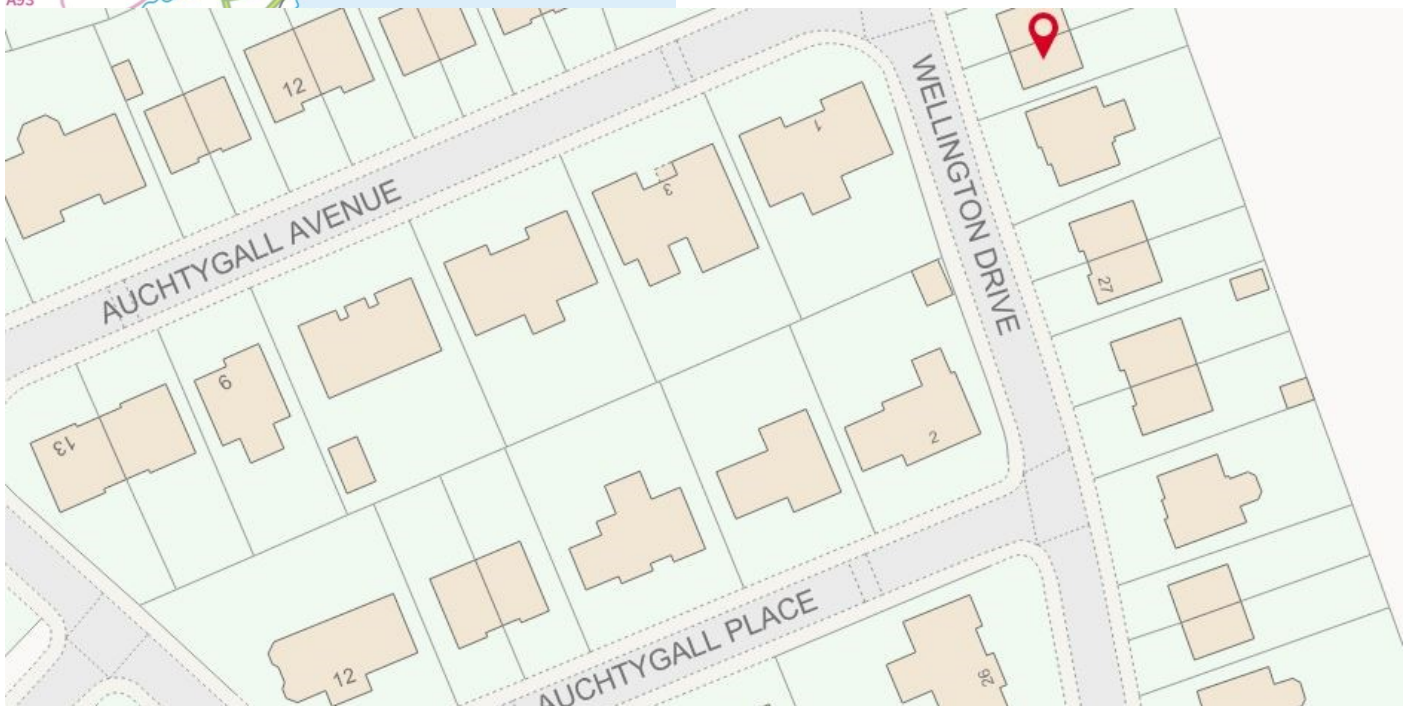
Back Garden with Lights



Location



Peterhead is a coastal fishing town on the A90 approximately 30 miles north of Aberdeen which is ideal for commuting to the city, the airport and nearby towns such as Ellon. There are good bus links to the city and surrounding areas. Peterhead has a good range of amenities including a variety of shops, supermarkets, restaurants, hotels, sporting facilities and a community centre. There is a range of primary schools and Peterhead Academy provides good secondary schooling.



Further Information

For further information please contact:
Development Officer - 01467 539457
LCHO@aberdeenshire.gov.uk